

LOC I-TPA 110.3	APP CRS 187°	Rwy ldg 8300	TDZE 26
		Apt Elev 26	

ILS or LOC RWY 19L

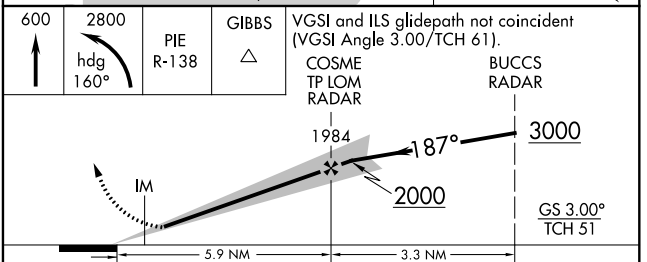
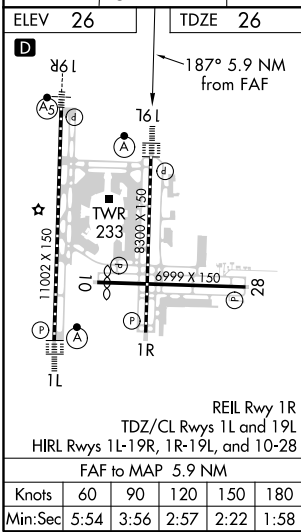
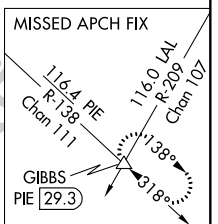
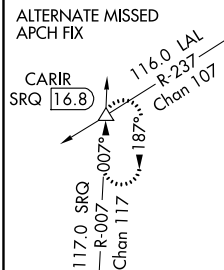
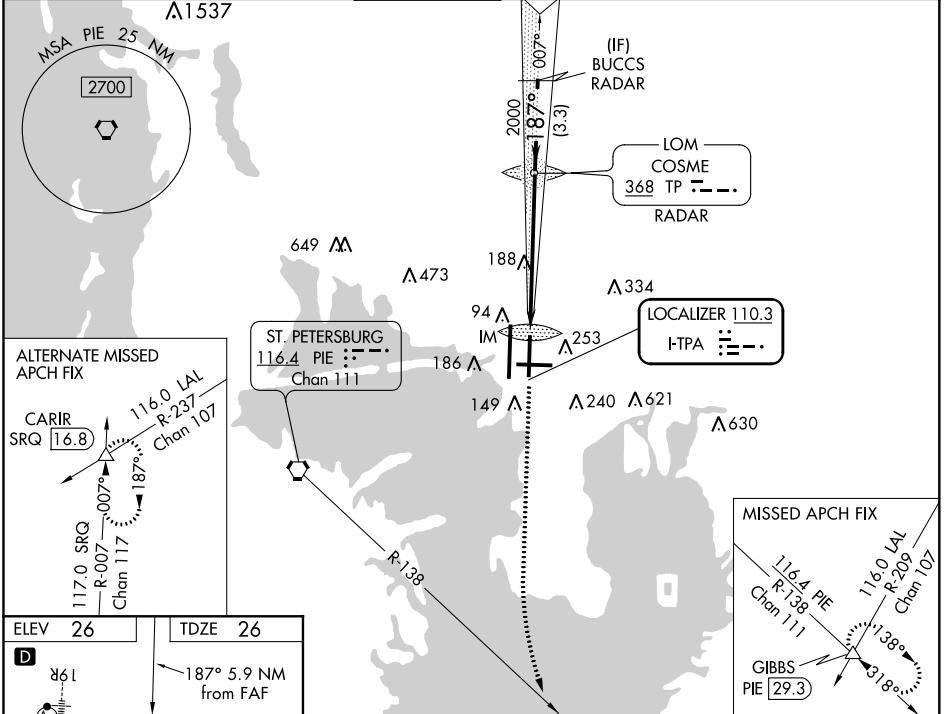
TAMPA INTL (TPA)

Simultaneous approach authorized. RADAR required.
For inop ALS, increase S-ILS 19L Cat E visibility to RVR 4000 and S-LOC 19L Cat E visibility to RVR 6000.

ALSIF-2

MISSED APPROACH: Climb to 600 then climbing left turn to 2800 on heading 160° and on PIE VORTAC R-138 to GIBBS INT/PIE 29.3 DME and hold.

ARR 126.45	D-ATIS 128.475	DEP 118.5 307.175	TAMPA APP CON 119.5 269.4	TAMPA TOWER 119.5 269.4	GND CON 121.7 269.4	CLNC DEL 133.6	CPDLC
----------------------	--------------------------	-----------------------------	-------------------------------------	-----------------------------------	-------------------------------	--------------------------	-------



CATEGORY	A	B	C	D	E
S-ILS 19L	226/18 200 (200-1/2)				
S-LOC 19L	440/24	414 (500-1/2)	440/40 414 (500-3/4)		
C CIRCLING	560-1	534 (600-1)	680-1 3/4 654 (700-1 3/4)	980-3 954 (1000-3)	NA

SE-3, 15 JUL 2021 to 12 AUG 2021

SE-3, 15 JUL 2021 to 12 AUG 2021