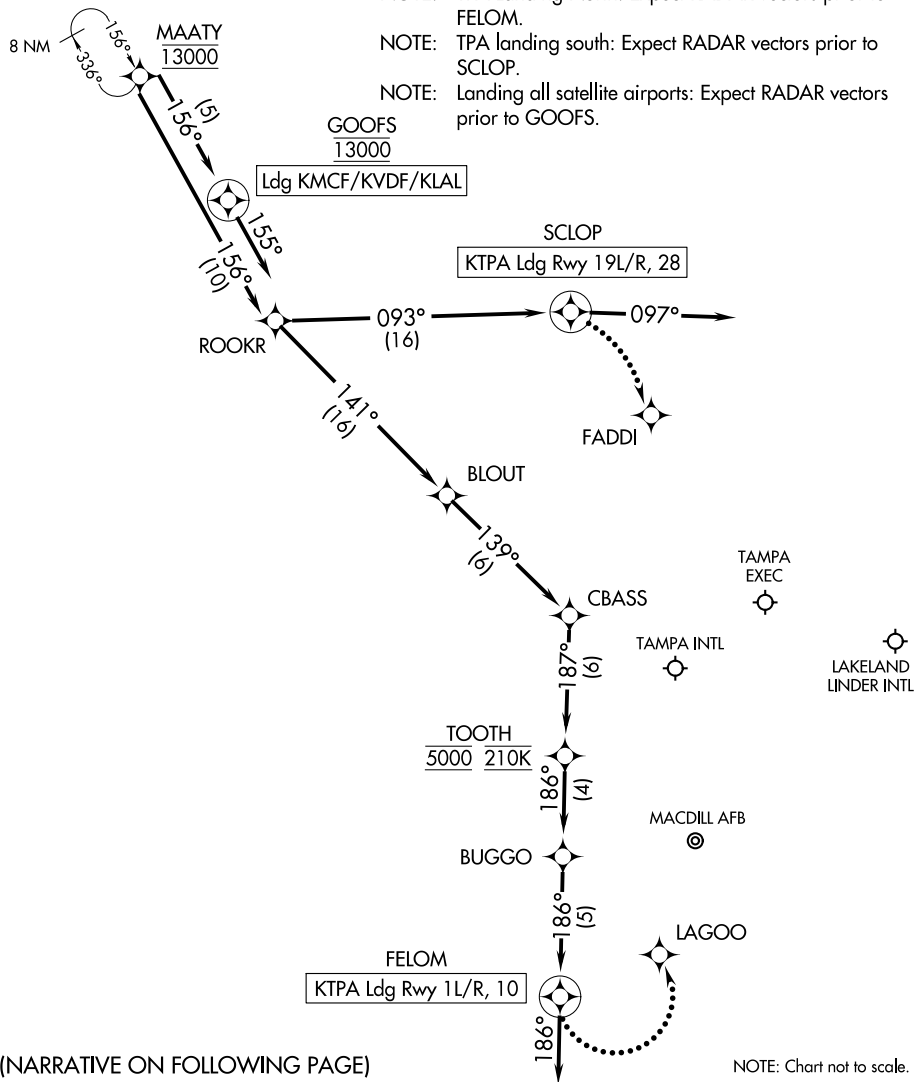


MAATY ONE ARRIVAL (RNAV) Arrival Routes

TAMPA, FLORIDA

TAMPA APP CON  
118.8 239.3  
KMCF ATIS  
133.825 270.1  
LAL ATIS  
118.025  
TPA D-ATIS  
126.45  
VDF AWOS-3  
121.125

- NOTE: RADAR required.
- NOTE: RNAV 1.
- NOTE: DME/DME/IRU or GPS required.
- NOTE: Turbojet and turboprop aircraft only.
- NOTE: Descend via MACH number until intercepting 280K. Maintain 280K until slowed by the STAR or assigned by ATC.
- NOTE: Primary landing Rwy 1L/R, 19L/R.
- NOTE: TPA landing south: Expect 250K at MAATY.
- NOTE: TPA Landing North: Expect RADAR vectors prior to FELOM.
- NOTE: TPA landing south: Expect RADAR vectors prior to SCLOP.
- NOTE: Landing all satellite airports: Expect RADAR vectors prior to GOOFS.



(NARRATIVE ON FOLLOWING PAGE)

NOTE: Chart not to scale.

SE-3, 15 JUL 2021 to 12 AUG 2021

SE-3, 15 JUL 2021 to 12 AUG 2021