

WAAS CH 49100 W19A	APP CRS 187°	Rwy Idg TDZE Apt Elev	8300 26 26
---------------------------------	------------------------	-----------------------------	---------------------------------------

RNAV (GPS) Z RWY 19L

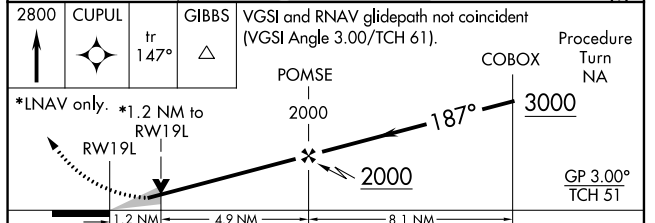
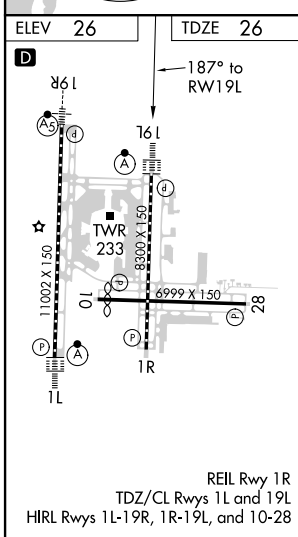
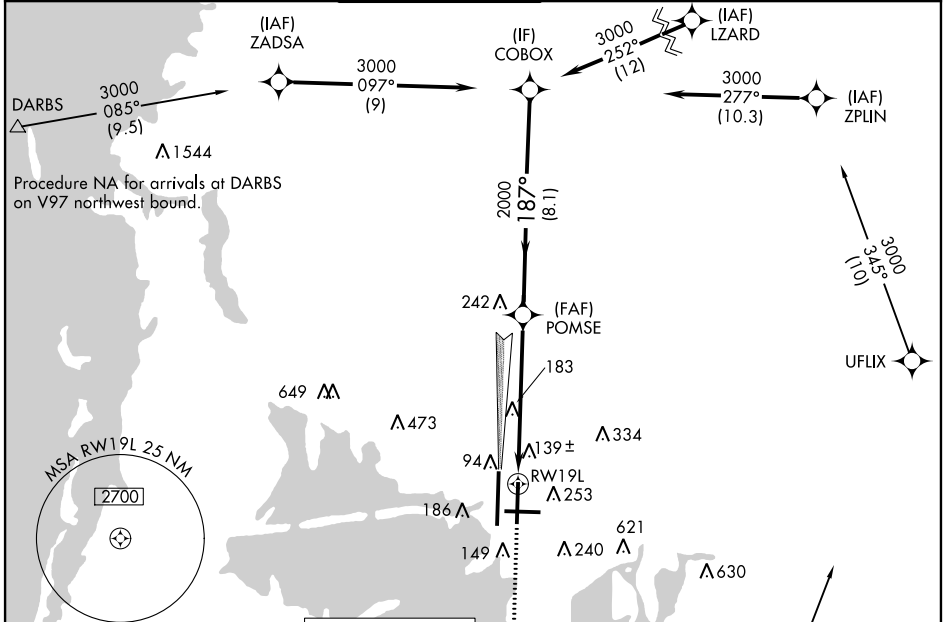
TAMPA INTL (TPA)

⚠ For uncompensated Baro-VNAV systems, LNAV/VNAV NA below -15°C (5°F) or above 43°C (109°F). DME/DME RNP-0.3 NA. Simultaneous approach authorized with Rwy 19R. LNAV procedure NA during simultaneous operations. Use of FD or AP providing RNAV track guidance required during simultaneous operations. ** RVR 1800 authorized with use of FD or AP or HUD to DA.

ALSF-2

MISSED APPROACH: Climb to 2800 direct CUPUL and on track 147° to GIBBS and hold.

ARR	D-ATIS	DEP	TAMPA APP CON	TAMPA TOWER	GND CON	CLNC DEL	CPDLC
126.45		128.475	118.5 307.175	119.5 269.4	121.7 269.4	133.6	



CATEGORY	A	B	C	D
LPV DA**		226/24	200 (200-½)	
LNAV/VNAV DA		440/45	414 (500-¾)	
LNAV MDA	460/24	434 (500-½)	460/40	434 (500-¾)
C CIRCLING	560-1	534 (600-1)	680-1¾ 654 (700-1¾)	980-3 954 (1000-3)

SE-3, 15 JUL 2021 to 12 AUG 2021

SE-3, 15 JUL 2021 to 12 AUG 2021