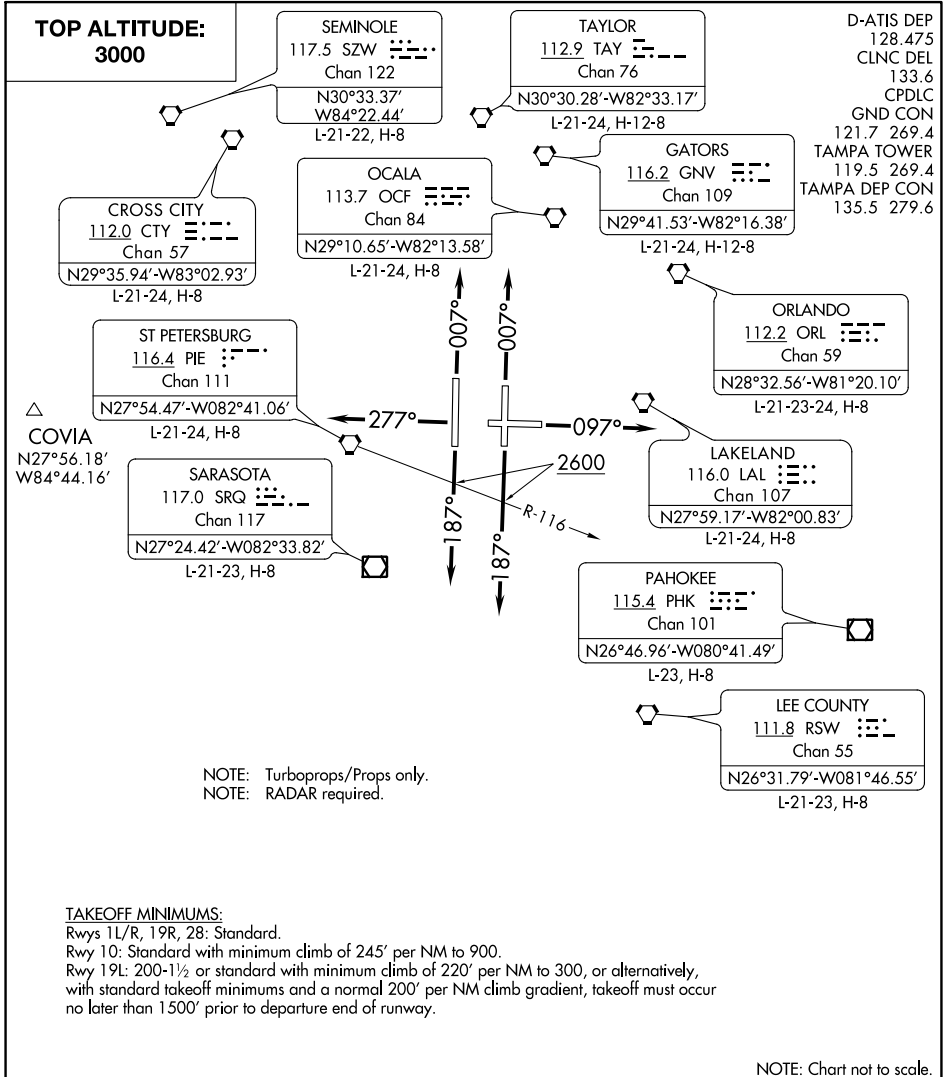


TAMPA SEVEN DEPARTURE



SE-3, 15 JUL 2021 to 12 AUG 2021

SE-3, 15 JUL 2021 to 12 AUG 2021

DEPARTURE ROUTE DESCRIPTION

TAKEOFF RUNWAYS 11L/R: Climb heading 007°, thence. . . .

TAKEOFF RUNWAY 10: Climb heading 097°, thence. . . .

TAKEOFF RUNWAYS 19L/R: Climb heading 187° to cross PIE R-116 at or above 2600, thence. . . .

TAKEOFF RUNWAY 28: Climb heading 277°, thence. . . .

. . . .expect RADAR vectors to join filed/assigned route. Maintain 3000. Expect clearance to filed altitude/flight level within 10 minutes after departure.