

TAMPA, FLORIDA

# ILS or LOC RWY 5

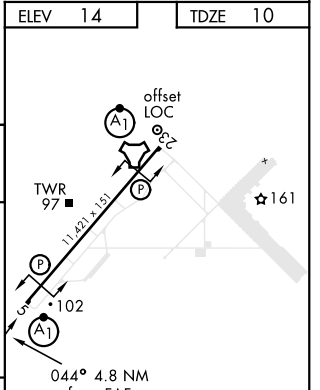
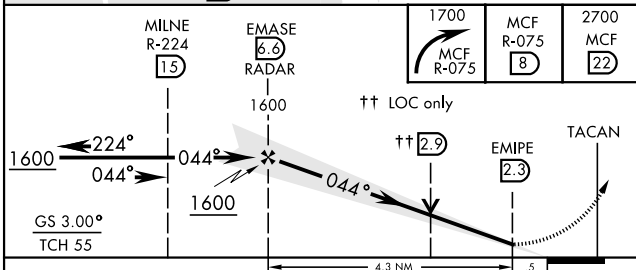
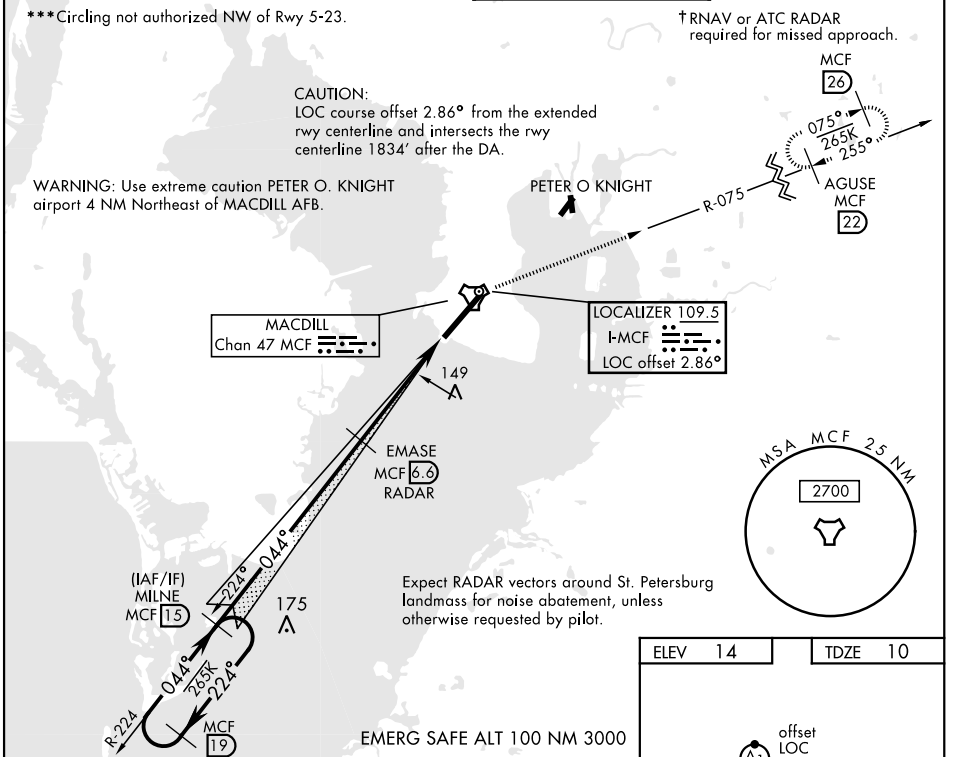
LOC I-MCF <b>109.5</b>	APCH CRS <b>044°</b>	Rwy Idg <b>11,421</b> TDZE <b>10</b> Arpt Elev <b>14</b>
---------------------------	-------------------------	----------------------------------------------------------------------

AL-418 [USAF]

MACDILL AFB (KMCF)

RADAR or DME required.		ALSIF-1 	† MISSED APPROACH: Climb to 2700 via MCF TACAN R-075 to MCF 22 DME and hold. Cross 8 DME at 1700.
*When ALS inop, increase RVR to 40, vis to 3/4 mile. **When ALS inop, increase CAT AB RVR to 55, vis to 1 mile; CAT CDE RVR to 60, vis to 1 1/8 miles.			

ATIS <b>133.825 270.1</b>	TAMPA APP CON <b>124.95 354.0</b>	MACDILL TOWER <b>120.175 294.7</b>	GND CON <b>118.575 275.8</b>
------------------------------	--------------------------------------	---------------------------------------	---------------------------------



CATEGORY	A	B	C	D	E
S-ILS 5 *	260/24 (300-1/2)				
S-LOC 5 **	420/24	410 (500-1/2)	420/40 410 (500-3/4)		
CIRCLING ***	500-1 486 (500-1)	540-1 526 (600-1)	540-1 1/2 526 (600-1 1/2)	580-2 566 (600-2)	1020-3 1006 (1100-3)
HIRL Rwy 5-23					
LOC FAF to MAP 4.3 NM					
Knots	60	90	120	150	180
Min:Sec	4:18	2:52	2:09	1:43	1:26

TAMPA, FLORIDA

27°51'N-82°31'W

MACDILL AFB (KMCF)

Orig 31DEC20

# ILS or LOC RWY 5

SE-3, 15 JUL 2021 to 12 AUG 2021

SE-3, 15 JUL 2021 to 12 AUG 2021