

TAMPA, FLORIDA

# TACAN RWY 23

TACAN MCF Chan 47	APCH CRS 240°	Rwy ldg TDZE Arprt Elev	11,421 14 14
-------------------	---------------	-------------------------	--------------------

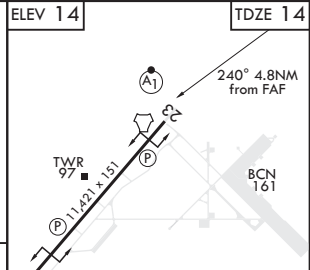
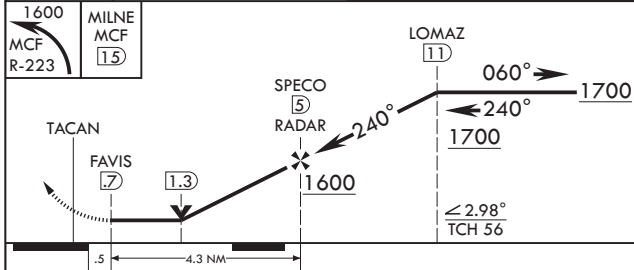
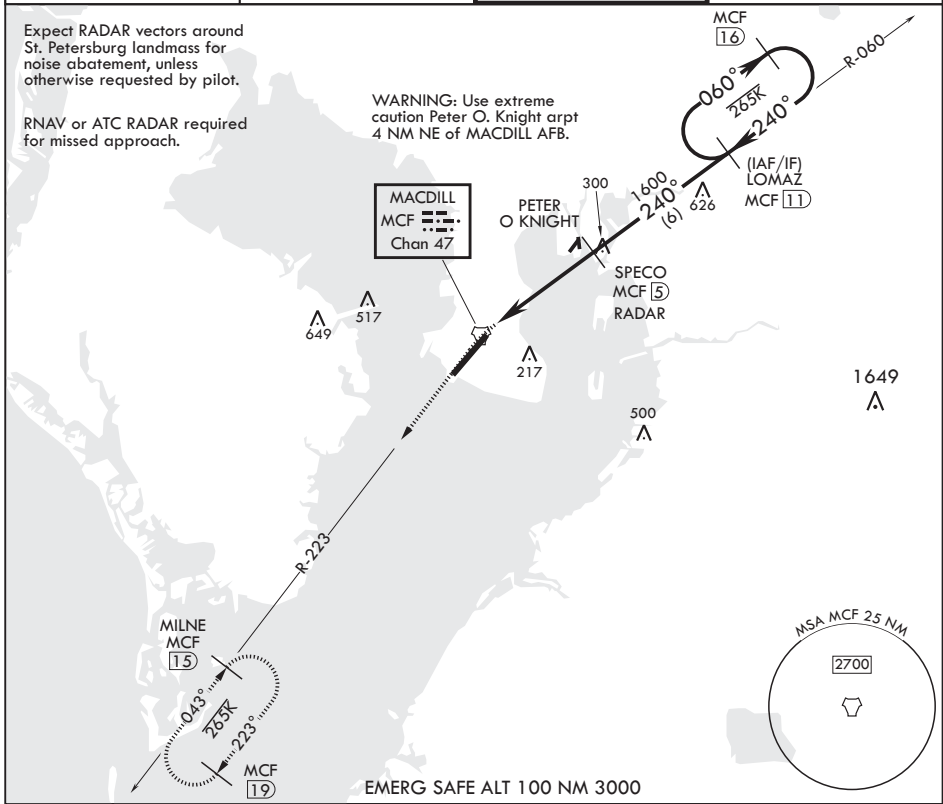
AL-418 (USAF)

MACDILL AFB (KMCF)

\* When ALS inop, increase CAT AB RVR to 55, vis to 1 mile; CAT CDE vis to 1 1/4 miles.  
 \*\* Circling not authorized NW of Rwy 5-23.

ALSF-1 MISSED APPROACH: Climb to 1600 via MCF TACAN R-223 to MILNE and hold.

ATIS 133.825 270.1	TAMPA APP CON 124.95 354.0	TOWER 120.175 294.7	GND CON 118.575 275.8
--------------------	----------------------------	---------------------	-----------------------



CATEGORY	A	B	C	D	E
S-23*	440/24 426 (500-1/2)		440/40 426		(500-3/4)
CIRCLING**	520-1 486 (600-1)	540-1 526 (600-1)	540-1 1/2 526 (600-1 1/2)	580-2 566 (600-2)	1020-3 1006 (1100-3)

TAMPA, FLORIDA 27°51'N - 82°31'W MACDILL AFB (KMCF)

Orig 31DEC20

# TACAN RWY 23

SE-3, 15 JUL 2021 to 12 AUG 2021

SE-3, 15 JUL 2021 to 12 AUG 2021