

WAAS CH 53611 W22A	APP CRS 223°	Rwy Idg TDZE 23 Apt Elev 24	4945
--	------------------------	---	-------------

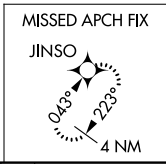
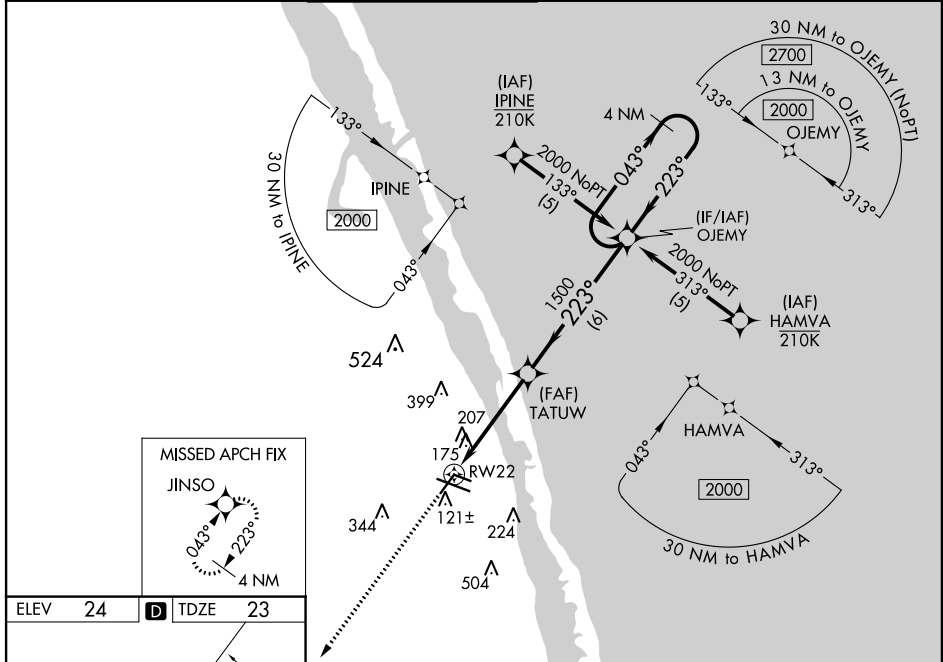
RNAV (GPS) RWY 22

VERO BEACH RGNL (VRB)

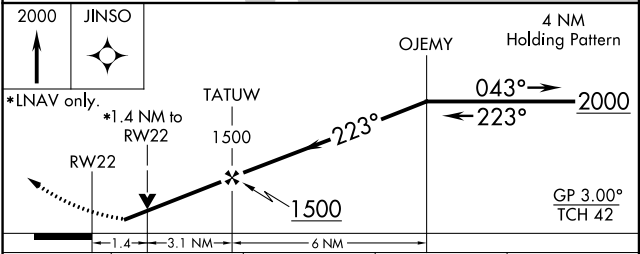
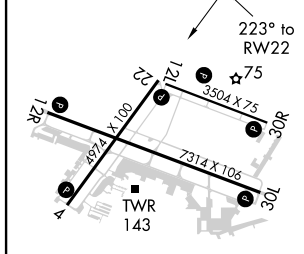
⚠ Circling to Rwy 30R NA at night. For uncompensated Baro-VNAV systems, LNAV/VNAV NA below 0°C (32°F) or above 43°C (109°F). DME/DME RNP-0.3 NA. When local altimeter setting not received, use Fort Pierce altimeter setting and increase all DA 23 feet and all MDA 40 feet and increase LPV and LNAV/VNAV all Cats visibility 1/8 mile and LNAV Cats C/D 1/8 mile and Circling Cat D visibility 1/4 mile. Baro-VNAV and VDP NA when using Fort Pierce altimeter setting. Rwy 22 helicopter visibility reduction below 3/4 SM NA.

MISSED APPROACH:
Climb to 2000 direct JINSO and hold.

ATIS 120.575	PALM BEACH APP CON 123.625 225.4 (N)	VERO BEACH TOWER * 126.3 (CTAF) 0	GND CON 127.45	CLNC DEL 134.975	UNICOM 122.95
------------------------	--	---	--------------------------	----------------------------	-------------------------



ELEV 24	D	TDZE 23
----------------	----------	----------------



CATEGORY	A	B	C	D
LPV DA		340-1	317 (400-1)	
LNAV/VNAV DA		544-1 3/4	521 (600-1 3/4)	
LNAV MDA	520-1	497 (500-1)	520-1 3/8	497 (500-1 3/8)
CIRCLING	560-1	536 (600-1)	560-1 1/2	660-2
			536 (600-1 1/2)	636 (700-2)

MIRL Rwy 4-22, 12R-30L, and 12L-30R **0**
REIL Rwy 4, 12R, 22 and 30L **0**

SE-3, 15 JUL 2021 to 12 AUG 2021

SE-3, 15 JUL 2021 to 12 AUG 2021