

| | | |
|--|------------------------|---|
| WAAS CH 61311 W04A | APP CRS 043° | Rwy Idg 4974 TDZE 24 Apt Elev 24 |
|--|------------------------|---|

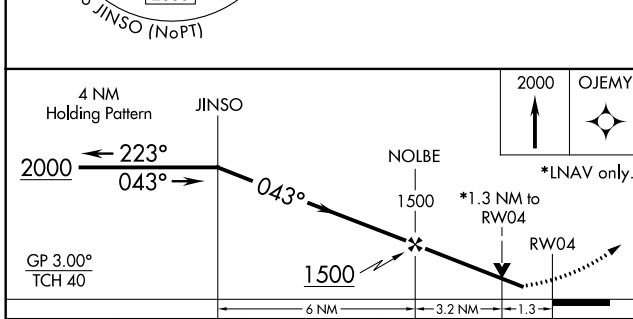
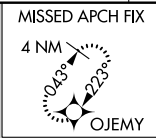
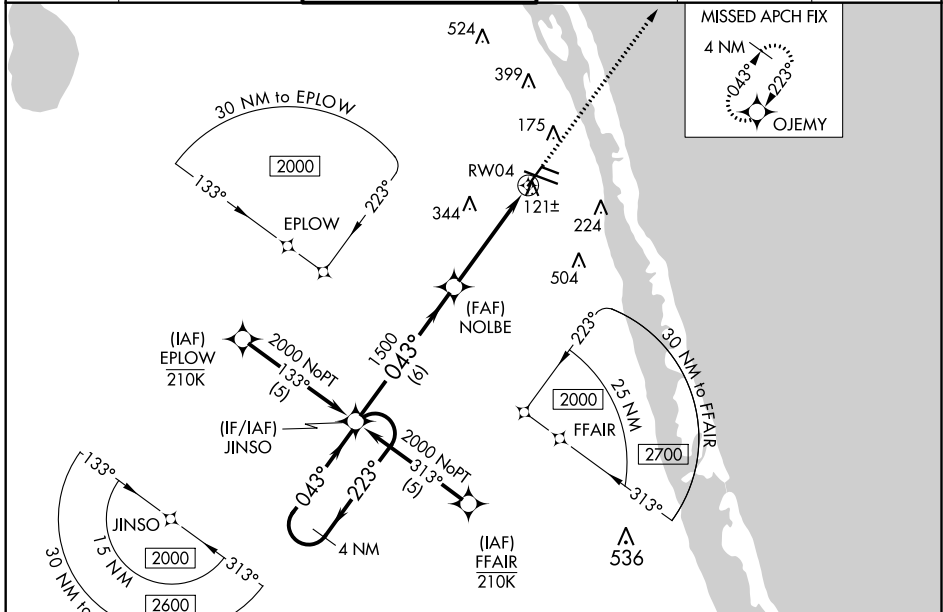
RNAV (GPS) RWY 4

VERO BEACH RGNL (VRB)

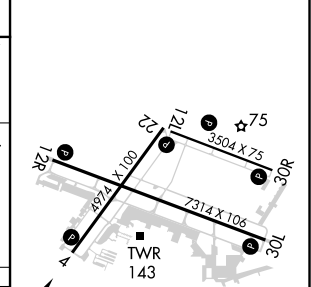
⚠ Circling to Rwy 30R NA at night. For uncompensated Baro-VNAV systems, LNAV/VNAV NA below 0°C (32°F) or above 54°C (130°F). DME/DME RNP-0.3 NA. When local altimeter setting not received, use Fort Pierce altimeter setting and increase all DA 23 feet and MDA 40 feet, increase LNAV/VNAV all Cats visibility 1/8 mile, LNAV Cat C/D visibility 1/4 mile and Circling Cat D visibility 1/4 mile. Baro-VNAV and VDP NA when using Fort Pierce altimeter setting. Rwy 4 helicopter visibility reduction below 3/4 SM NA.

MISSED APPROACH:
Climb to 2000 direct OJEMY and hold.

| | | | | | |
|------------------------|--|---|--------------------------|----------------------------|-------------------------|
| ATIS 120.575 | PALM BEACH APP CON 123.625 225.4 (N) | VERO BEACH TOWER * 126.3 (CTAF) 0 | GND CON 127.45 | CLNC DEL 134.975 | UNICOM 122.95 |
|------------------------|--|---|--------------------------|----------------------------|-------------------------|



| | | |
|---------|----------|---------|
| ELEV 24 | D | TDZE 24 |
|---------|----------|---------|



| CATEGORY | A | B | C | D |
|--------------|-------|-------------|-----------------|----------------------|
| LPV DA | | 297-7/8 | 273 (300-7/8) | |
| LNAV/VNAV DA | | 355-1 1/8 | 331 (400-1 1/8) | |
| LNAV MDA | 480-1 | 456 (500-1) | 480-1 3/8 | 456 (500-1 3/8) |
| CIRCLING | 560-1 | 536 (600-1) | 560-1 1/2 | 660-2 636 (700-2) |

MIRL Rwy 4-22, 12R-30L, and 12L-30R
REIL Rwy 4, 12R, 22 and 30L

SE-3, 15 JUL 2021 to 12 AUG 2021

SE-3, 15 JUL 2021 to 12 AUG 2021