

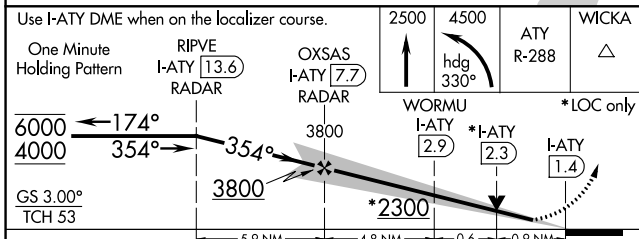
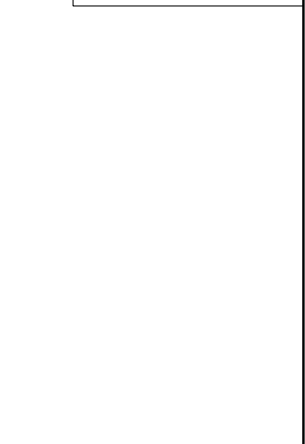
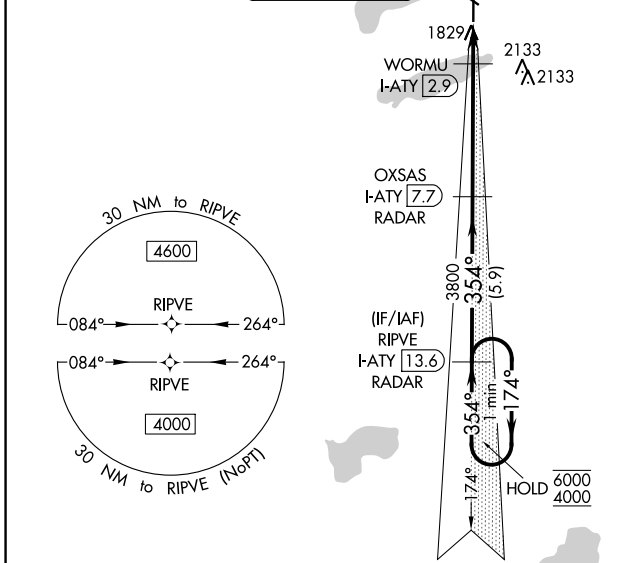
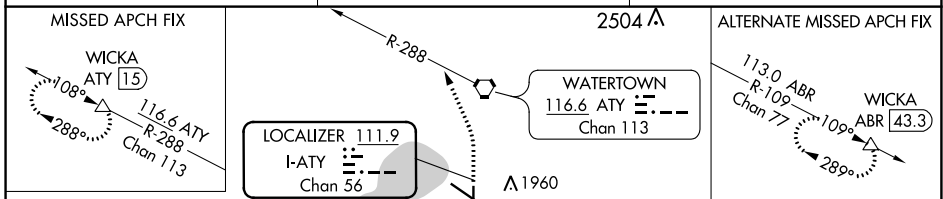
LOC/DME I-ATY 111.9 Chan 56	APP CRS 354°	Rwy Idg 6893 TDZE 1745 Apt Elev 1749
---	------------------------	---

ILS or LOC RWY 35

WATERTOWN RGNL (ATY)

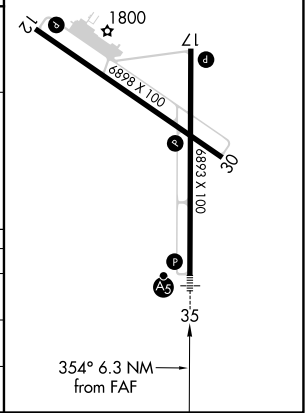
RNAV 1-GPS or RADAR required for procedure entry. DME required. MALSR MISSED APPROACH: Climb to 2500 then climbing left turn to 4500 on heading 330° and ATY R-288 to WICKA/ATY 1.5 DME and hold.

ASOS 126.625	MINNEAPOLIS CENTER 128.5 306.2	UNICOM 123.05 (CTAF)
------------------------	--	--------------------------------



ELEV 1749		TDZE 1745
REIL Rwy 12, 17 and 30		
HIRL Rwy 17-35		
MIRL Rwy 12-30		

CATEGORY	A	B	C	D
S-ILS 35		1945-1/2	200 (200-1/2)	
S-LOC 35		2080-1/2	335 (400-1/2)	
CIRCLING	2260-1	511 (600-1)	2500-2 1/4 751 (800-2 1/4)	2500-2 1/2 751 (800-2 1/2)



NC-1, 15 JUL 2021 to 12 AUG 2021

NC-1, 15 JUL 2021 to 12 AUG 2021