

WAAS CH 53405 W12A	APP CRS 118°	Rwy Idg TDZE Apt Elev	6898 1749 1749
--	------------------------	-----------------------------	---

RNAV (GPS) RWY 12

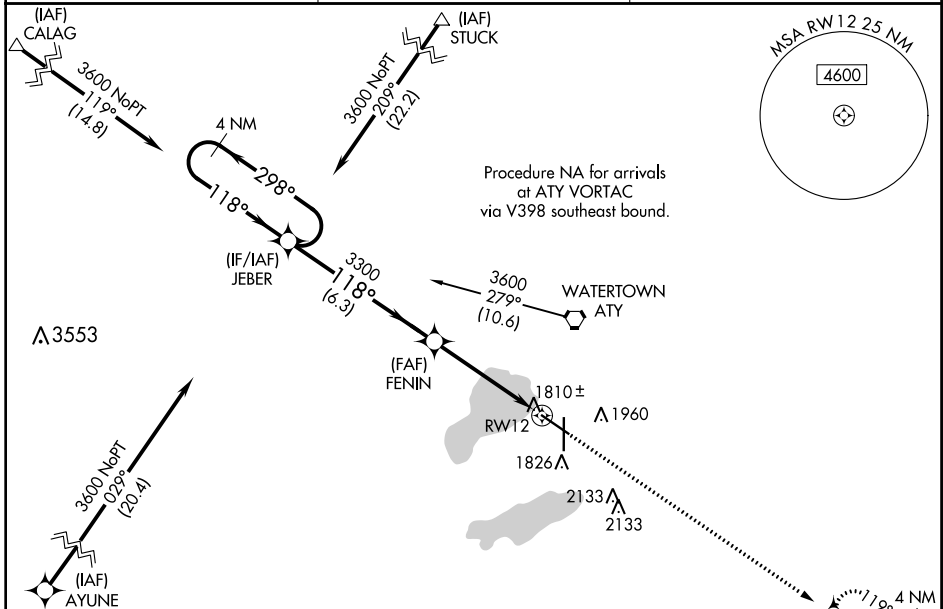
WATERTOWN RGNL (ATY)

RNP APCH.

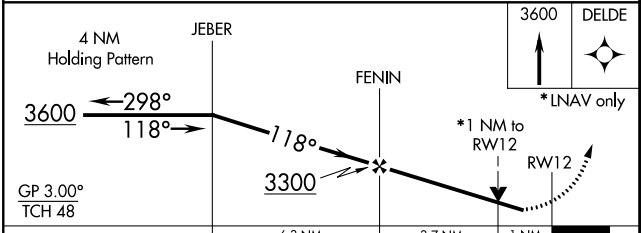
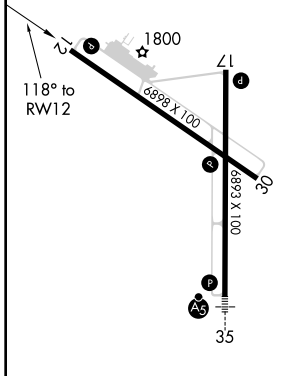
⚠ For uncompensated Baro-VNAV systems, LNAV/VNAV NA below -18°C (0°F) or above 45°C (113°F). Rwy 12 helicopter visibility reduction below ¾ SM NA. When local altimeter setting not received, use Brookings altimeter setting and increase all DA 105 feet and all MDA 120 feet, increase LNAV Cat C and D visibility ¾ SM and Circling Cat C/D visibility ½ SM. VDP NA when using Brookings altimeter setting. Baro-VNAV NA when using Brookings altimeter setting.

MISSED APPROACH: Climb to 3600 direct DELDE and hold.

ASOS 126.625	MINNEAPOLIS CENTER 128.5 306.2	UNICOM 123.05 (CTAF) 0
------------------------	--	----------------------------------



ELEV 1749	D	TDZE 1749
-----------	----------	-----------



CATEGORY	A	B	C	D
LPV DA		2021-1	272 (300-1)	
LNAV/VNAV DA		2076-1¼	327 (400-1¼)	
LNAV MDA		2100-1	351 (400-1)	
C CIRCLING	2260-1	511 (600-1)	2500-2¼ 751 (800-2¼)	2500-2½ 751 (800-2½)

REIL Rwy 12, 17 and 30 **L**

HIRL Rwy 17-35 **L**

MIRL Rwy 12-30 **L**

NC-1, 15 JUL 2021 to 12 AUG 2021

NC-1, 15 JUL 2021 to 12 AUG 2021