

WAAS CH <b>82614</b> W35A	APP CRS <b>354°</b>	Rwy Idg TDZE Apt Elev	<b>6893</b> <b>1745</b> <b>1749</b>
---------------------------------	------------------------	-----------------------------	---

# RNAV (GPS) RWY 35

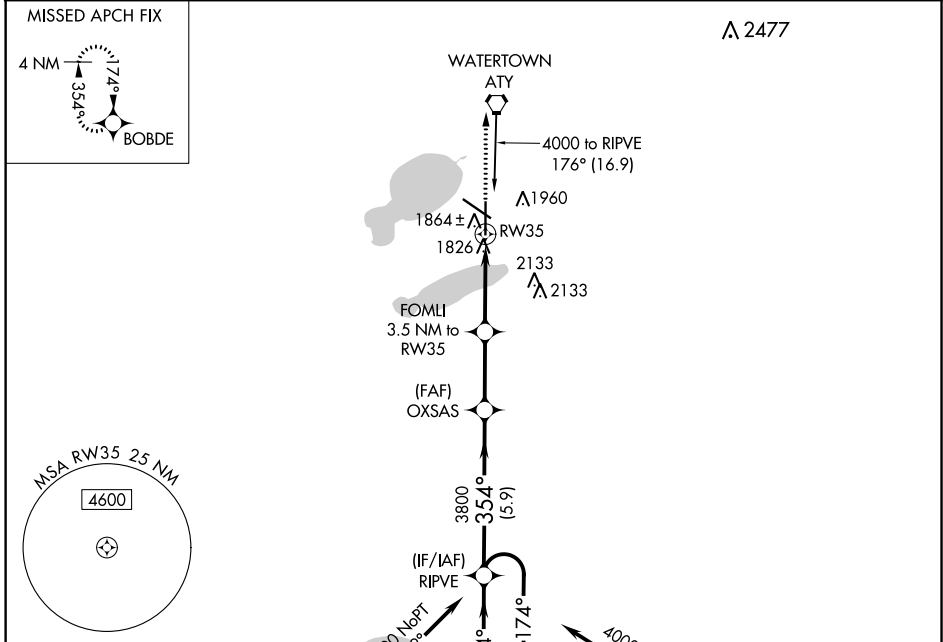
WATERTOWN RGNL (ATY)

**⚠** For uncompensated Baro-VNAV systems, LNAV/VNAV NA below -21°C (-5°F) or above 54°C (130°F). DME/DME RNP -0.3 NA. For inop ALS, increase LNAV Cat C/D visibility to 1½ SM.

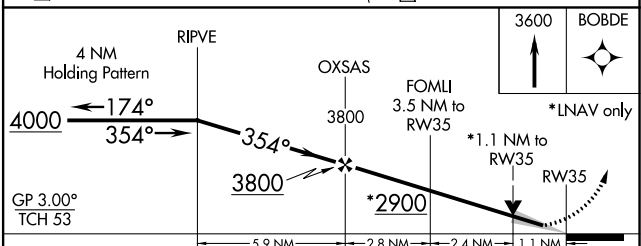
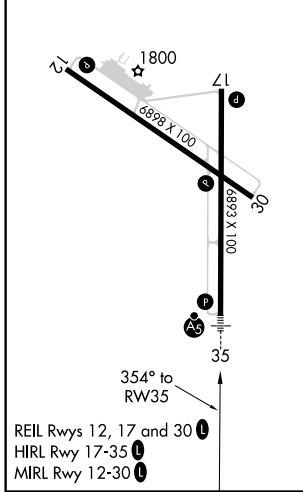
**MALSR**

**MISSED APPROACH:** Climb to 3600 direct BOBDE and hold.

ASOS <b>126.625</b>	MINNEAPOLIS CENTER <b>128.5 306.2</b>	UNICOM <b>123.05 (CTAF) 0</b>
------------------------	--	----------------------------------



ELEV 1749	<b>D</b> TDZE 1745
-----------	--------------------



CATEGORY	A	B	C	D
LPV DA	1945-½		200 (200-½)	
LNAV/VNAV DA	2180-1		435 (500-1)	
LNAV MDA	2160-½	415 (500-½)	2160-¾	415 (500-¾)
<b>C</b> CIRCLING	2260-1	511 (600-1)	2500-2¼ 751 (800-2¼)	2500-2½ 751 (800-2½)

NC-1, 15 JUL 2021 to 12 AUG 2021

NC-1, 15 JUL 2021 to 12 AUG 2021