

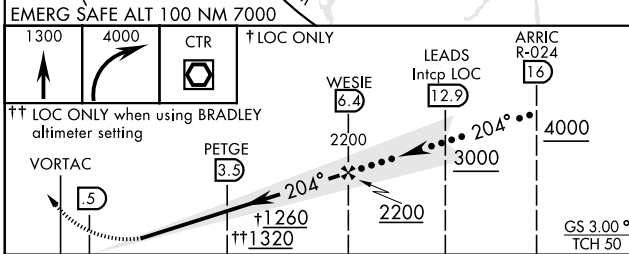
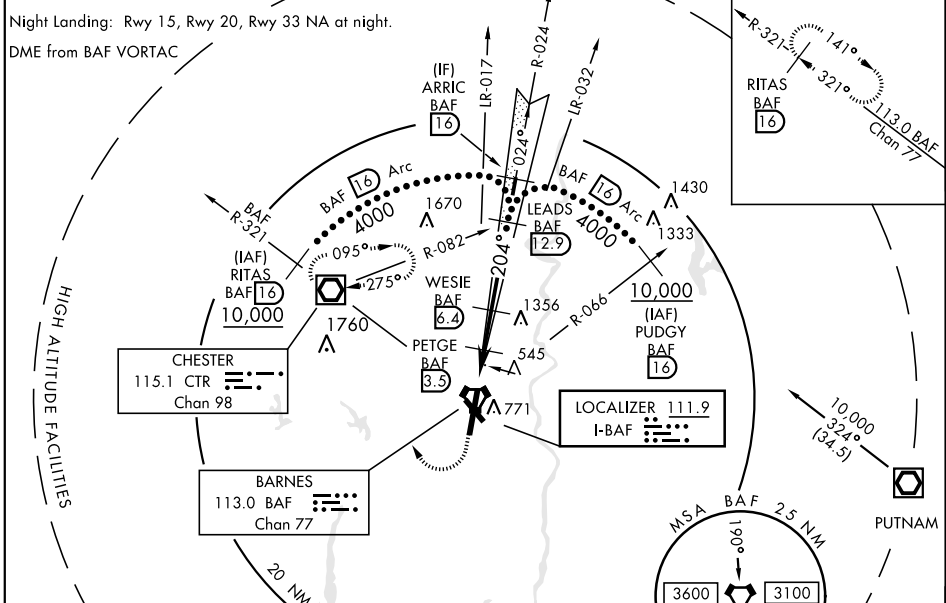
HI-ILS or LOC RWY 20

LOC I-BAF 111.9	APCH CRS 204°	Rwy ldg TDZE Arprt Elev 9000 270 270	JAL-446 [USAF]	WESTFIELD-BARNES REGIONAL (KBAF)
---------------------------	-------------------------	--	----------------	----------------------------------

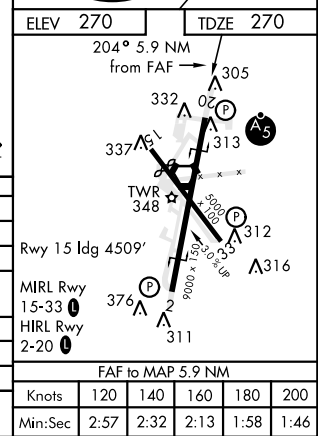
A5
MALSRS MISSED APPROACH: Climb to 1300, then climbing right turn to 4000 direct CTR VOR/DME and hold, continue climb in hold to 4000.
 (**When ALS inop, increase CAT CD vis to 1½ miles, CAT E vis to 3 miles.)
 (TACAN acct climb to 1300, then climbing right turn to 4000 via hdg 010° and BAF VORTAC R-321 to RITAS and hold.)

ATIS 127.1 263.15	BRADLEY APP CON 125.35 281.5	WESTFIELD TOWER ★ 118.9 (CTAF) 0 251.1	GND CON 121.7 289.4
-----------------------------	--	--	-------------------------------

*** When ALS inop, increase vis to 1¾ miles.
 When local altimeter setting not received, use Bradley Intl altimeter setting.
 Night Landing: Rwy 15, Rwy 20, Rwy 33 NA at night.
 DME from BAF VORTAC



CATEGORY	C	D	E
S-ILS 20*	520/50	250 (300-1)	
S-LOC 20**	800/55	530 (600-1¼)	
CIRCLING	1160-2¾	890 (900-2¾)	1660-3 1390 (1400-3)
BRADLEY INTL ALTIMETER			
S-ILS 20*	564/50	294 (300-1)	
S-LOC 20***	860-1¼	590 (600-1¼)	
CIRCLING	1200-2¾ 930 (1000-2¾)	1200-3 930 (1000-3)	1680-3 1410 (1500-3)



HI-ILS or LOC RWY 20

NE-1, 15 JUL 2021 to 12 AUG 2021

NE-1, 15 JUL 2021 to 12 AUG 2021