

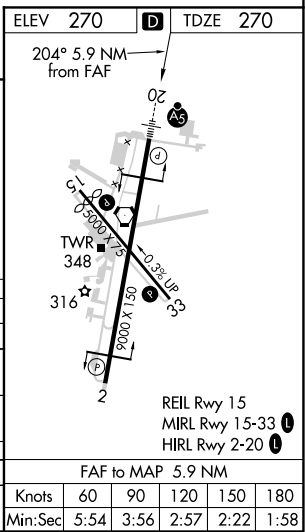
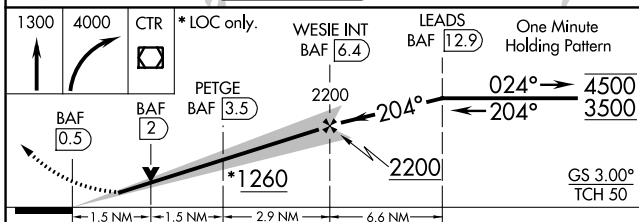
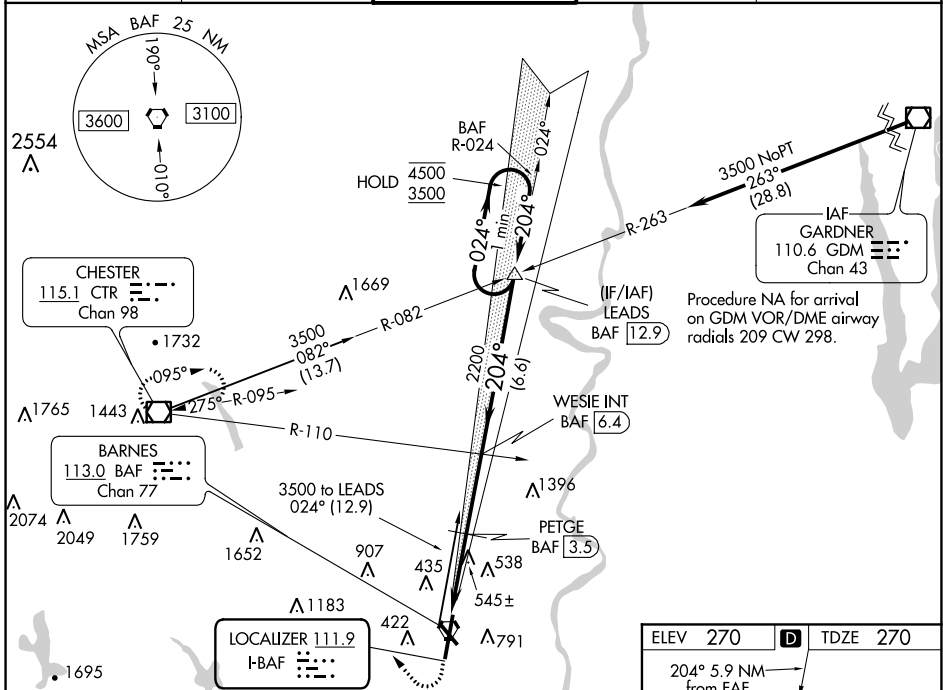
LOC I-BAF 111.9	APP CRS 204°	Rwy Idg TDZE Apt Elev	8919 270 270
---------------------------	------------------------	-----------------------------	---

ILS or LOC RWY 20

WESTFIELD-BARNES RGNL (BAF)

<p>⚠ Circling Rwy 15 NA at night. DME from BAF VORTAC. DME use requires simultaneous reception of I-BAF and BAF DME. For inop ALS, increase S-ILS 20 Cat E visibility to RVR 4000; increase S-LOC 20 Cat E visibility to 3 SM; increase PETGE fix minimums S-LOC 20 Cat E visibility to 1 1/2 SM.</p> <p>⚠ -21°C</p>	<p>MALS R</p>	<p>MISSED APPROACH: Climb to 1300 then climbing right turn to 4000 direct CTR VOR/DME and hold, continue climb-in-hold to 4000.</p>
--	----------------------	--

ATIS 127.1 263.15	YANKEE APP CON 125.35 281.5	WESTFIELD TOWER ★ 118.9 (CTAF) 0 251.1	GND CON 121.7 289.4	CLNC DEL 121.7
-----------------------------	---------------------------------------	---	-------------------------------	--------------------------



CATEGORY	A	B	C	D	E
S-ILS 20	520/24		250 (300-1/2)		
S-LOC 20	1260/40 990 (1000-3/4)	1260/55 990 (1000-1)	1260-2 1/2 990 (1000-2 1/2)		
C CIRCLING	1260-1 1/4 990 (1000-1 1/4)	1260-1 1/2 990 (1000-1 1/2)	1260-3 990 (1000-3)	1660-3 1390 (1400-3)	
PETGE FIX MINIMUMS (DME REQUIRED)					
S-LOC 20	800/24 530 (600-1/2)		800/55 530 (600-1)		
C CIRCLING	1160-1 1/4 890 (900-1 1/4)		1160-2 3/4 890 (900-2 3/4) 1660-3 1390 (1400-3)		

NE-1, 15 JUL 2021 to 12 AUG 2021

NE-1, 15 JUL 2021 to 12 AUG 2021