

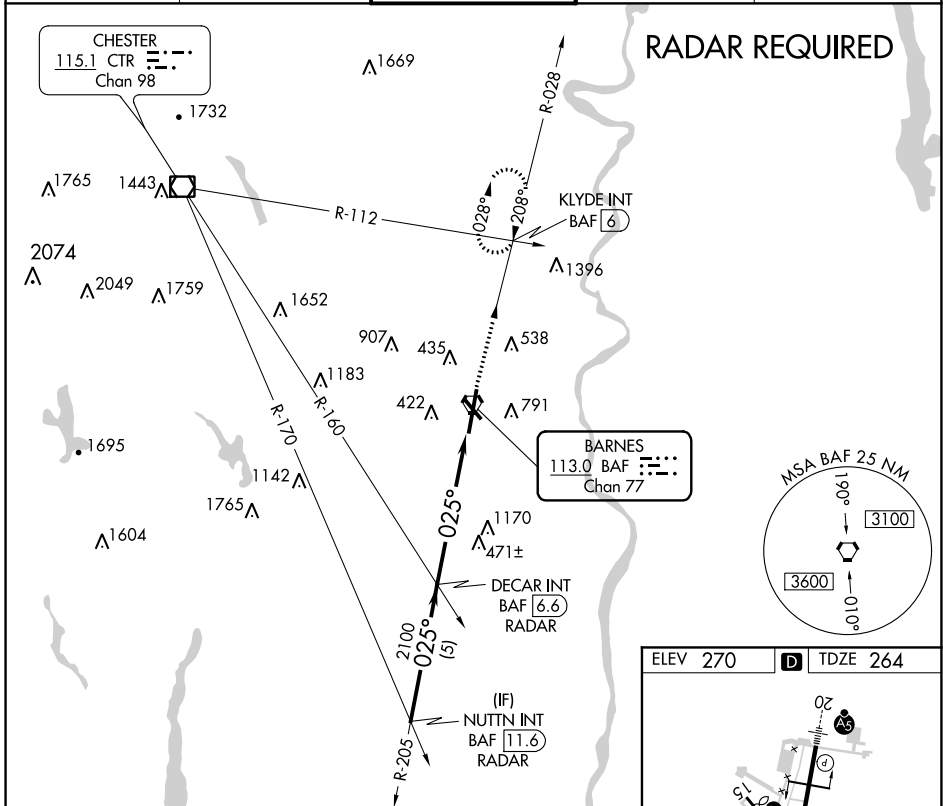
BAF VORTAC 113.0 Chan 77	APP CRS 025°	Rwy Idg 9000 TDZE 264 Apt Elev 270
---------------------------------------	------------------------	---

VOR or TACAN RWY 2

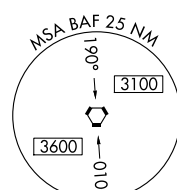
WESTFIELD-BARNES RGNL (BAF)

	Night landing: Rwy 15 NA. Helicopter visibility reduction below 3/4 SM NA.	MISSED APPROACH: Climb to 3000 via the BAF VORTAC R-028 to KLYDE INT and hold.
	-21°C	

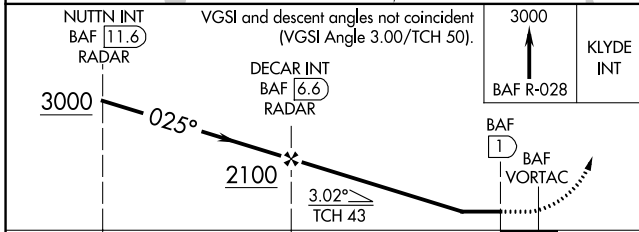
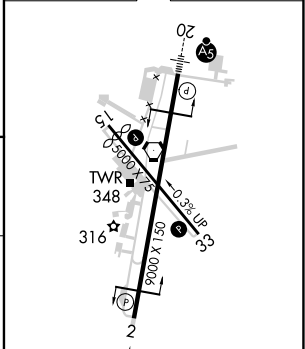
ATIS 127.1 263.15	YANKEE APP CON 125.35 281.5	WESTFIELD TOWER* 118.9 (CTAF) 0 251.1	GND CON 121.7 289.4	CLNC DEL 121.7
-----------------------------	---------------------------------------	--	-------------------------------	--------------------------



RADAR REQUIRED



ELEV 270	D TDZE 264
----------	-------------------



CATEGORY	A	B	C	D	E
S-2	780-1	516 (600-1)	780-1½ 516 (600-1½)	780-1¾	516 (600-1¾)
CIRCLING	1160-1¼	890 (900-1¼)	1160-2¾ 890 (900-2¾)	1660-3	1390 (1400-3)

025° 5.6 NM from FAF	REIL Rwy 15
	MIRL Rwy 15-33
	HIRL Rwy 2-20
FAF to MAP 5.6 NM	
Knots	60 90 120 150 180
Min:Sec	5:36 3:44 2:48 2:14 1:52

NE-1, 15 JUL 2021 to 12 AUG 2021

NE-1, 15 JUL 2021 to 12 AUG 2021