

# BUFIT TWO DEPARTURE (RNAV)

SE-3, 15 JUL 2021 to 12 AUG 2021

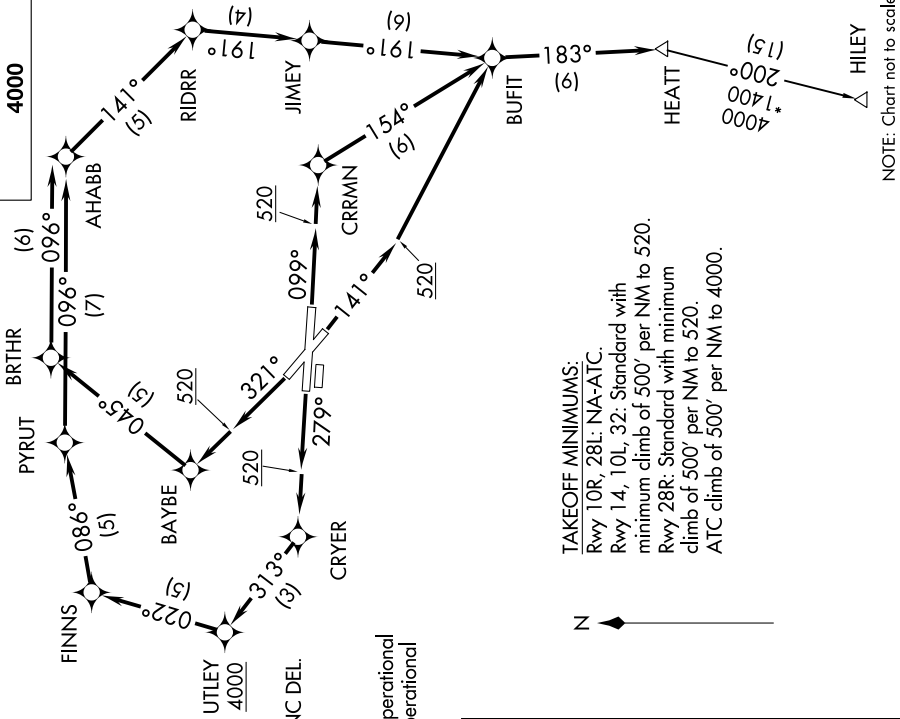
D-ATIS  
123.75  
CLINC DEL  
121.6 284.6  
GND CON  
121.9 284.6  
PALM BEACH TOWER  
119.1 257.8  
PALM BEACH DEP CON  
128.3 317.4 (North)  
125.2 343.6 (South)

NOTE: For Turbojets only.  
NOTE: If unable to accept minimum climb rates, advise ATC on initial contact.  
NOTE: Transponder code will be issued via PDC or Palm Beach CLINC DEL.  
NOTE: DME/DME/IRU or GPS required.  
NOTE: RADAR required.  
NOTE: RNAV 1.  
NOTE: For non-GPS equipped aircraft: FLL and PBI DMEs must be operational for takeoff Rwy 10L, 14, FLL, PBI, and PHK DMEs must be operational for takeoff Rwy 28R, 32.

### DEPARTURE ROUTE DESCRIPTION

TAKEOFF RWY 10L: Climb heading 099° to 520, then direct CRRMN, then via depicted route to BUFIT. Thence. . . .  
TAKEOFF RWY 14: Climb heading 141° to 520, then left turn direct BUFIT. Thence. . . .  
TAKEOFF RWY 28R: Climb heading 279° to 520, then direct CRYER, then via depicted route to BUFIT. Thence. . . .  
TAKEOFF RWY 32: Climb heading 321° to 520, then direct BAYBE, then via depicted route to BUFIT. Thence. . . .  
... via depicted route to HEATT. Maintain 4000 or as assigned by ATC. Expect clearance to filed altitude within 10 minutes after departure.  
HILEY TRANSITION (BUFIT2.HILEY)

TOP ALTITUDE:  
4000



TAKEOFF MINIMUMS:  
Rwy 10R, 28L: NA-ATC.  
Rwy 14, 10L, 32: Standard with minimum climb of 500' per NM to 520.  
Rwy 28R: Standard with minimum climb of 500' per NM to 520.  
ATC climb of 500' per NM to 4000.

# BUFIT TWO DEPARTURE (RNAV)

SE-3, 15 JUL 2021 to 12 AUG 2021