

ILS/DME I-PBI 111.9 Chan 56	APP CRS 099°	Rwy Idg TDZE Apt Elev	8800 16 20
---	------------------------	-----------------------------	---------------------------------------

ILS or LOC RWY 10L

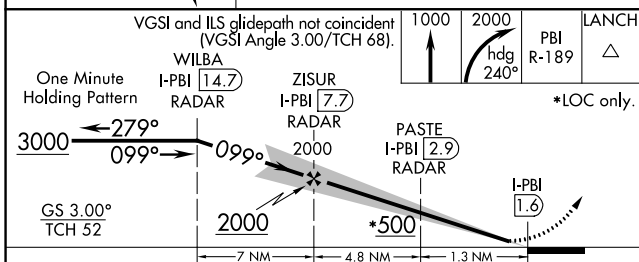
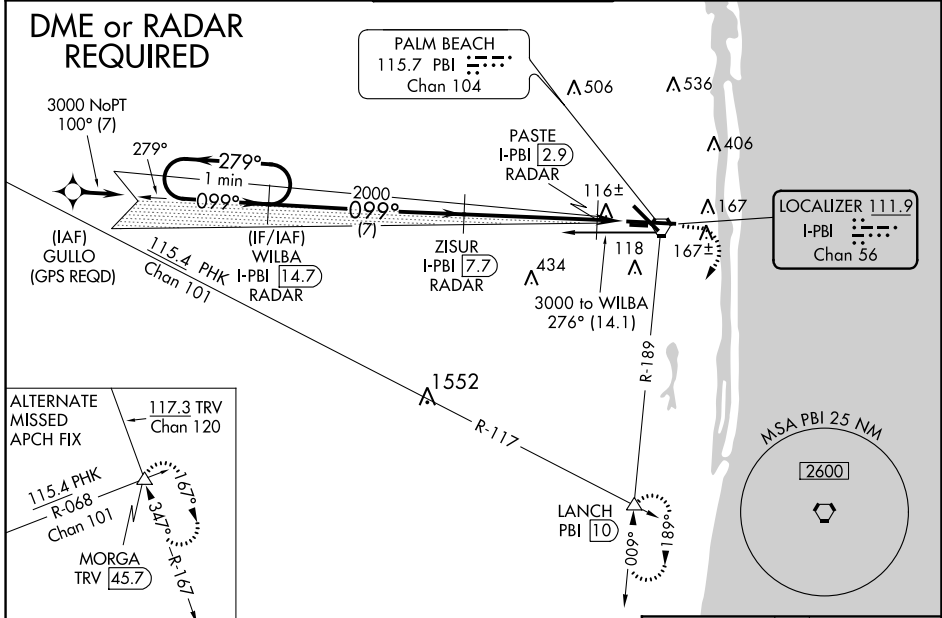
PALM BEACH INTL (PBI)

DME or RADAR required. For inop ALS, increase S-LOC 10L Cat C/D visibility to 1½ SM and PASTE Fix Minimums S-LOC 10L Cat C/D visibility to RVR 5500.
#RVR 1800 authorized with the use of FD or AP or HUD to DA.

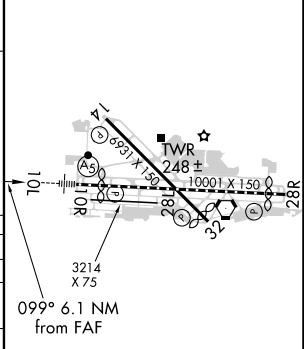


MISSED APPROACH: Climb to 1000 then climbing right turn to 2000 on heading 240° and PBI VORTAC R-189 to LANCH INT/PBI 10 DME and hold.

D-ATIS 123.75	PALM BEACH APP CON 128.3 317.4	PALM BEACH TOWER 119.1 257.8	GND CON 121.9 284.6	CLNC DEL 121.6 284.6
-------------------------	--	--	-------------------------------	--------------------------------



ELEV 20	TDZE 16
---------	---------



CATEGORY	A	B	C	D
S-ILS 10L#	216/24 200 (200-½)			
S-LOC 10L	500/24	484 (500-½)	500/50	484 (500-1)
C CIRCLING	560-1	540 (600-1)	680-1¾ 660 (700-1¾)	780-2½ 760 (800-2½)
PASTE FIX MINIMUMS				
S-LOC 10L	380/24	364 (400-½)	380/35	364 (400-¾)
C CIRCLING	560-1	540 (600-1)	680-1¾ 660 (700-1¾)	780-2½ 760 (800-2½)

HRL Rwy 10L-28R
REIL Rwy 10R, 14, 28L, 28R and 32
MIRL Rwy 14-32 and 10R-28L
FAF to MAP 6.1 NM

Knots	60	90	120	150	180
Min:Sec	6:06	4:04	3:03	2:26	2:02

SE-3, 15 JUL 2021 to 12 AUG 2021

SE-3, 15 JUL 2021 to 12 AUG 2021