

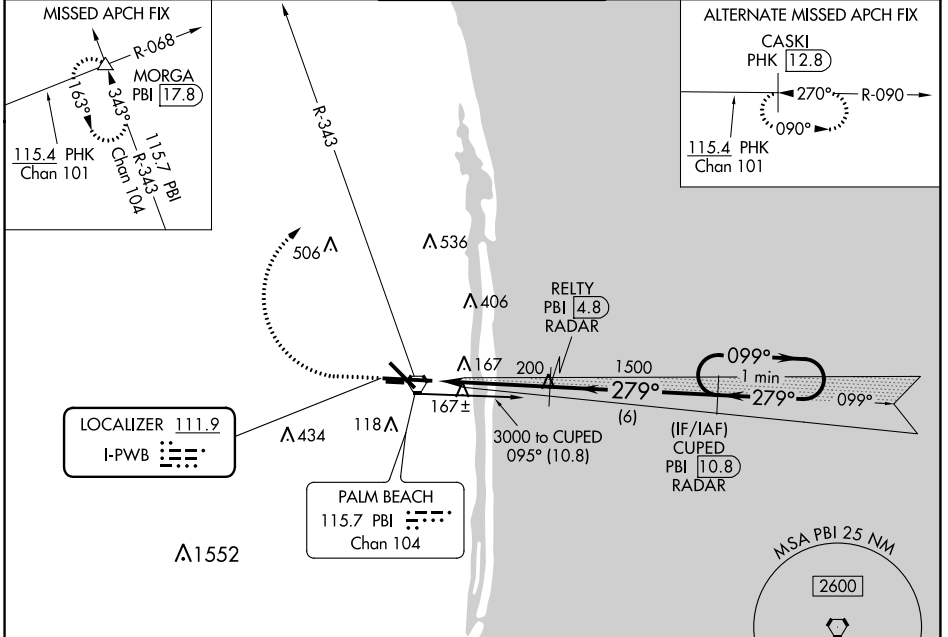
LOC I-PWB <b>111.9</b>	APP CRS <b>279°</b>	Rwy Idg TDZE <b>9189</b> <b>18</b>	Apt Elev <b>20</b>
---------------------------	------------------------	--	-----------------------

# ILS or LOC RWY 28R

PALM BEACH INTL (PBI)

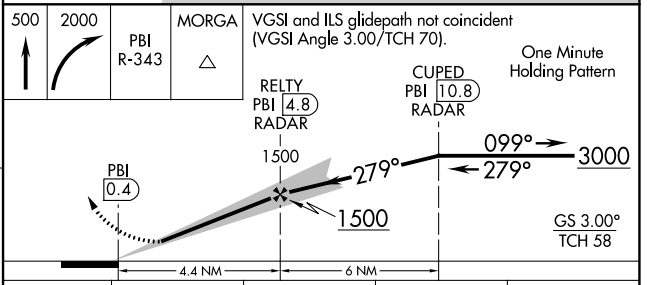
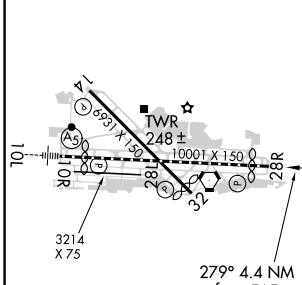
**MISSED APPROACH:** Climb to 500 then climbing right turn to 2000 on PBI VORTAC R-343 to MORGA INT/PBI 17.8 DME and hold.

D-ATIS <b>123.75</b>	PALM BEACH APP CON <b>128.3 317.4</b>	PALM BEACH TOWER <b>119.1 257.8</b>	GND CON <b>121.9 284.6</b>	CLNC DEL <b>121.6 284.6</b>
-------------------------	--	--	-------------------------------	--------------------------------



ELEV 20	<b>D</b> TDZE 18
---------	------------------

## DME or RADAR REQUIRED



HIRL RWY 10L-28R REIL RWYS 10R, 14, 28L, 28R and 32 MIRL RWYS 14-32 and 10R-28L					
FAF to MAP 4.4 NM					
Knots	60	90	120	150	180
Min:Sec	4:24	2:56	2:12	1:46	1:28

CATEGORY	A	B	C	D
S-ILS 28R	218/40 200 (200-3/4)			
S-LOC 28R	460/50	442 (500-1)	460/60 442 (500-1/4)	460-1/2 442 (500-1/2)
<b>C</b> CIRCLING	560-1	540 (600-1)	680-1 3/4 660 (700-1 3/4)	780-2 1/2 760 (800-2 1/2)

SE-3, 15 JUL 2021 to 12 AUG 2021

SE-3, 15 JUL 2021 to 12 AUG 2021