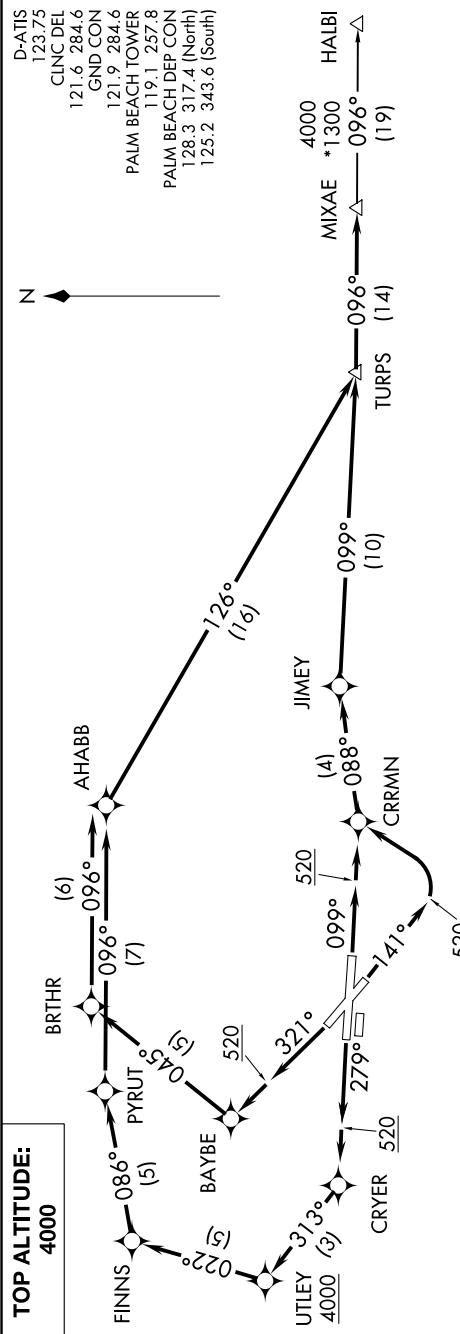


MIXAE TWO DEPARTURE (RNAV)

SE-3, 15 JUL 2021 to 12 AUG 2021



TOP ALTITUDE:
4000

DEPARTURE ROUTE DESCRIPTION

TAKEOFF RWY 10L: Climb heading 099° to 520, then direct CRRMN, then via depicted route to TURPS, thence. . .

TAKEOFF RWY 14: Climb heading 141° to 520, then turn left direct CRRMN, then via depicted route to TURPS, thence. . .

TAKEOFF RWY 28R: Climb heading 279° to 520, then direct CRYER, then via depicted route to TURPS, thence. . .

TAKEOFF RWY 32: Climb heading 321° to 520, then direct BAYBE, then via depicted route to TURPS, thence. . .

. . . via depicted route to MIXAE. Maintain 4000 or as assigned by ATC. Expect clearance to filed altitude within 10 minutes after departure.

HALBI TRANSITION (MIXAE2.HALBI)

NOTE: For Turbojets only.
NOTE: If unable to accept minimum climb rates, advise ATC on initial contact.
NOTE: Transponder code will be issued via PDC or Palm Beach CLNC DEL.
NOTE: DME/DME/IRU or GPS required.
NOTE: RADAR required.
NOTE: RNAV 1.
NOTE: For non-GPS equipped aircraft: FLL and PBI DMEs must be operational for takeoff Rwy 10L, 14, FLL, PBI, and PHK DMEs must be operational for takeoff Rwy 28R, 32.

TAKEOFF MINIMUMS:
 Rwy 10R, 28L: NA-ATC.
 Rwy 14, 10L, 32: Standard with minimum climb of 500' per NM to 520.
 Rwy 28R: Standard with minimum climb of 500' per NM to 520, ATC climb of 500' per NM to 4000.

NOTE: Chart not to scale.

MIXAE TWO DEPARTURE (RNAV)

(MIXAE2.MIXAE) 15OCT15

WEST PALM BEACH, FLORIDA
PALM BEACH INTL (PBI)

SE-3, 15 JUL 2021 to 12 AUG 2021