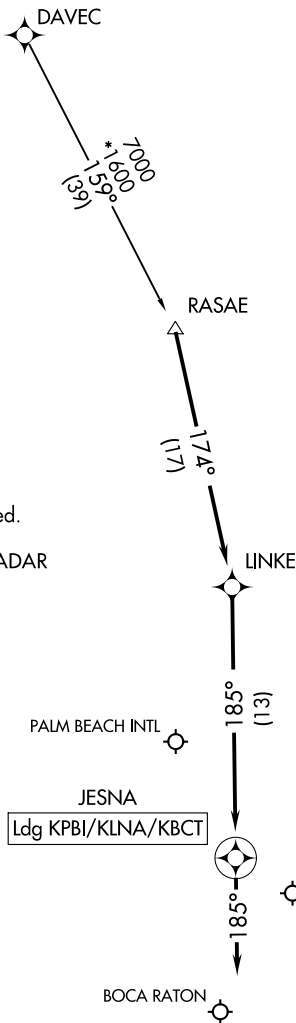


PALM BEACH APP CON  
124.6 317.4  
PBI D-ATIS  
123.75



- NOTE: RADAR required.
- NOTE: RNAV 1.
- NOTE: DME/DME/IRU or GPS required.
- NOTE: Turboprop aircraft only.
- NOTE: Landing All Airports: Expect RADAR vectors prior to JESNA.

SE-3, 15 JUL 2021 to 12 AUG 2021

SE-3, 15 JUL 2021 to 12 AUG 2021

NOTE: Chart not to scale.

ARRIVAL ROUTE DESCRIPTION

DAVEC TRANSITION (DAVEC.RASAE1)

LANDING KPBI/KLNA/KBCT: From RASAE on track 174° to LINKE, then on track 185° to JESNA, then on heading 185° or as assigned by ATC. Expect RADAR vectors to final approach course.