

APP CRS 279°	Rwy ldg 9189
	TDZE 18
	Apt Elev 20

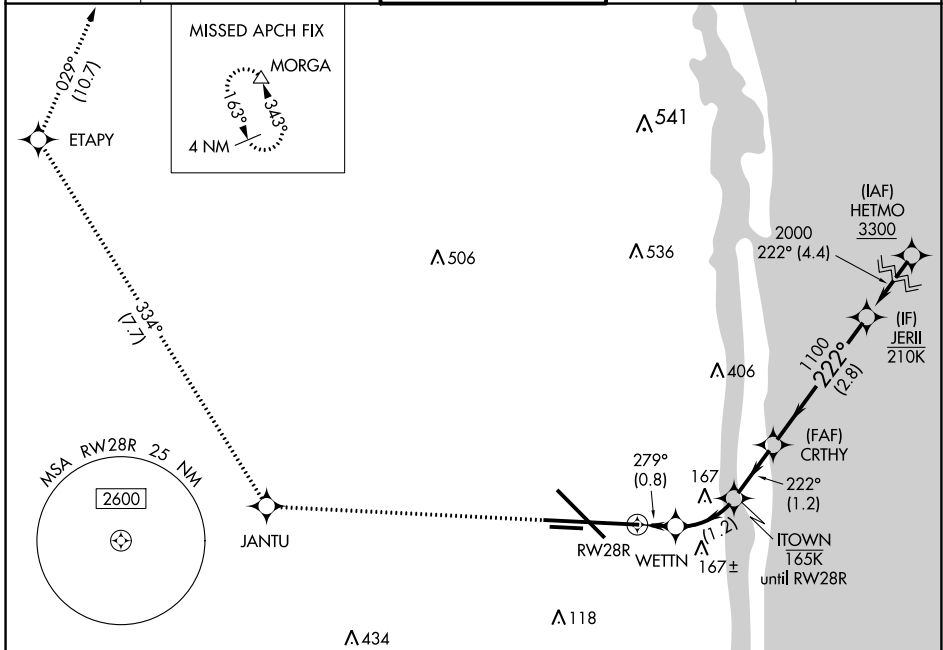
RNAV (RNP) W RWY 28R

PALM BEACH INTL (PBI)

⚠ For uncompensated Baro-VNAV systems, procedure NA below 4°C (40°F) or above 54°C (130°F). RF required. GPS required.

⚠ MISSED APPROACH: Climb to 2000 on the final approach track to Rwy 28R and direct JANTU then track 334° to ETAPY then track 029° to MORGA and hold.

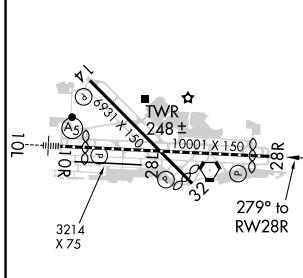
D-ATIS 123.75	PALM BEACH APP CON 128.3 317.4	PALM BEACH TOWER 119.1 257.8	GND CON 121.9 284.6	CLNC DEL 121.6 284.6
-------------------------	--	--	-------------------------------	--------------------------------



SE-3, 15 JUL 2021 to 12 AUG 2021

SE-3, 15 JUL 2021 to 12 AUG 2021

ELEV	20	D	TDZE	18
------	-----------	----------	------	-----------



HIRL Rwy 10L-28R
MIRL Rwy 14-32 and 10R-28L
REIL Rwy 10R, 14, 28L, 28R, and 32

2000	Final App tr to RWY 28R	JANTU	tr 334°	ETAPY	tr 029°	MORGA	JERII
VGSi and RNAV glidepath not coincident (VGSi Angle 3.00/TCH 70).							CRTHY
RWY 28R		WETTN	ITOWN	1100	222°	2000	GP 3.00° TCH 60
-0.8 NM		1.2 NM	1.2 NM	2.8 NM			
CATEGORY	A		B		C		D
RNP 0.30 DA	725-2½		707 (800-2½)				

AUTHORIZATION REQUIRED