

# RNAV (RNP) Z RWY 28R

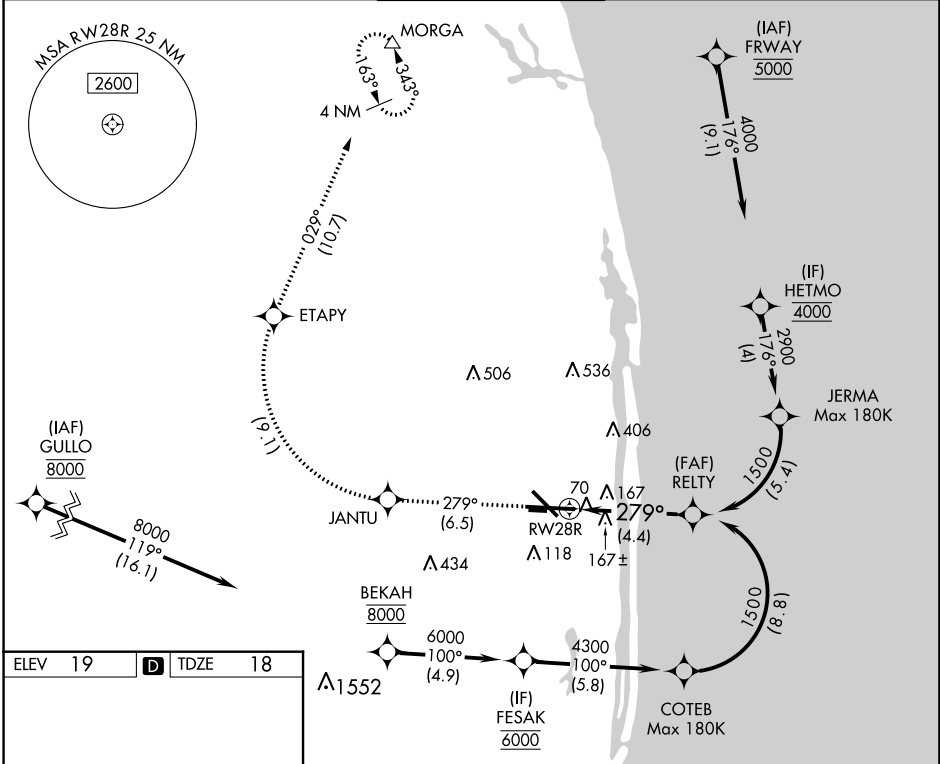
PALM BEACH INTL (PBI)

APP CRS	Rwy Idg	<b>9189</b>
<b>279°</b>	TDZE	<b>18</b>
	Apt Elev	<b>19</b>

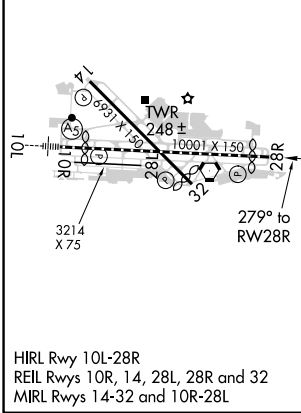
**▼** RF and GPS Required. For uncompensated Baro-VNAV systems, procedure NA below 3°C (38°F) or above 48°C (119°F).

**MISSED APPROACH:** Climb to 2000 on track 279° to JANTU and right turn to ETAPY and on track 029° to MORGA and hold.

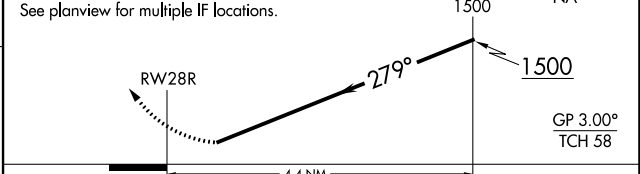
D-ATIS <b>123.75</b>	PALM BEACH APP CON <b>128.3 317.4</b>	PALM BEACH TOWER <b>119.1 257.8</b>	GND CON <b>121.9 284.6</b>	CLNC DEL <b>121.6 284.6</b>
-------------------------	--	--	-------------------------------	--------------------------------



ELEV 19	<b>D</b>	TDZE 18
---------	----------	---------



2000	JANTU	→	ETAPY	MORGA	Procedure Turn NA
tr 279°			tr 029°	△	



CATEGORY	A	B	C	D
RNP 0.30 DA	404/60 386 (400-1¼)			

**AUTHORIZATION REQUIRED**

SE-3, 15 JUL 2021 to 12 AUG 2021

SE-3, 15 JUL 2021 to 12 AUG 2021