

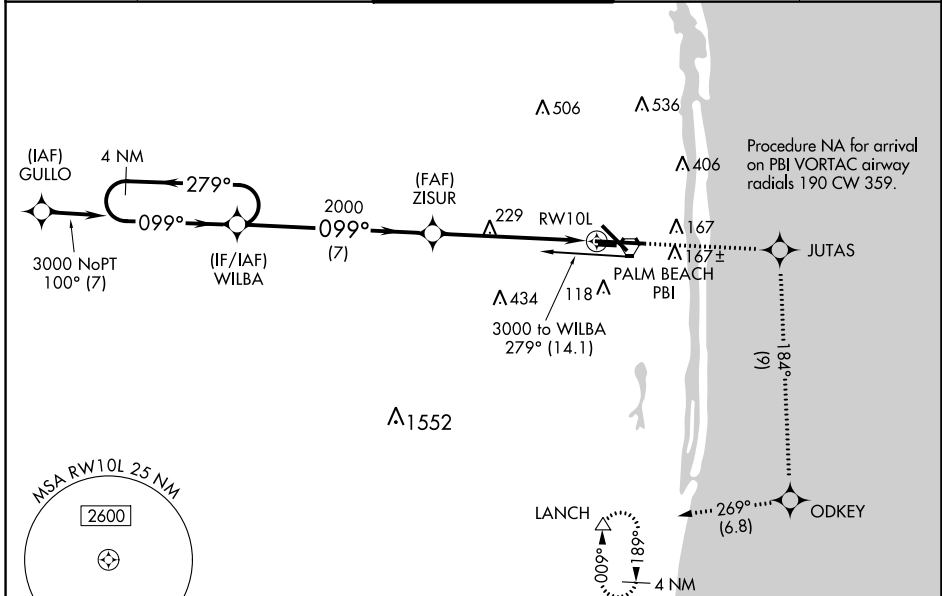
WAAS CH 97317 W10A	APP CRS 099°	Rwy Idg 8800 TDZE 16 Apt Elev 20
--	------------------------	---

RNAV (GPS) Y RWY 10L

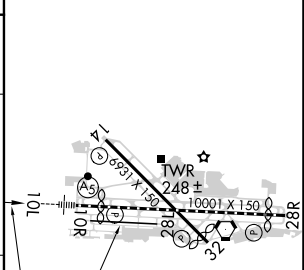
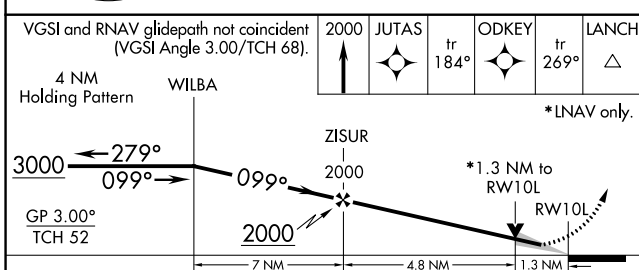
PALM BEACH INTL (PBI)

RNP APCH.	MALS R	MISSED APPROACH: Climb to 2000 direct JUTAS and on track 184° to ODKEY and on track 269° to LANCH and hold.
<p>⚠ For uncompensated Baro-VNAV systems, LNAV/VNAV NA below -15°C (5°F) or above 43°C (109°F). For inop ALS, increase LNAV Cats C/D visibility to 1½ SM. # RVR 1800 authorized with use of FD or AP or HUD to DA.</p>		

D-ATIS 123.75	PALM BEACH APP CON 128.3 317.4	PALM BEACH TOWER 119.1 257.8	GND CON 121.9 284.6	CLNC DEL 121.6 284.6
-------------------------	--	--	-------------------------------	--------------------------------



ELEV 20	D TDZE 16
---------	------------------



CATEGORY	A	B	C	D
LPV DA #	216/24		200 (200-½)	
LNAV/VNAV DA	404/40		388 (400-¾)	
LNAV MDA	500/24	484 (500-½)	500/50	484 (500-1)
C CIRCLING	560-1	540 (600-1)	680-1¾ 660 (700-1¾)	780-2½ 760 (800-2½)

HIRL Rwy 10L-28R
REIL Rwy 10R, 14, 28L, 28R and 32
MIRL Rwy 14-32 and 10R-28L

SE-3, 15 JUL 2021 to 12 AUG 2021

SE-3, 15 JUL 2021 to 12 AUG 2021