

WAAS CH <b>40018</b> <b>W14A</b>	APP CRS <b>141°</b>	Rwy Idg TDZE Apt Elev	<b>6000</b> <b>17</b> <b>19</b>
--	------------------------	-----------------------------	---------------------------------------

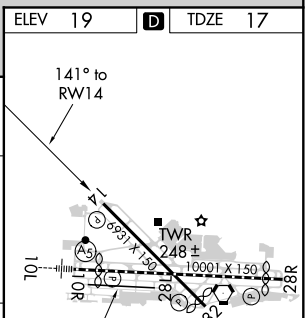
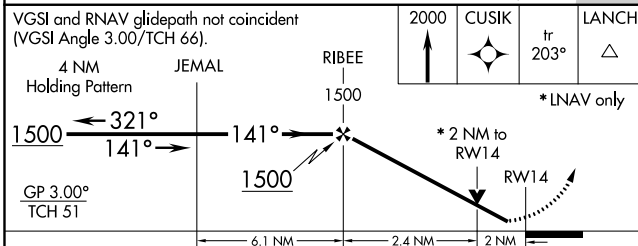
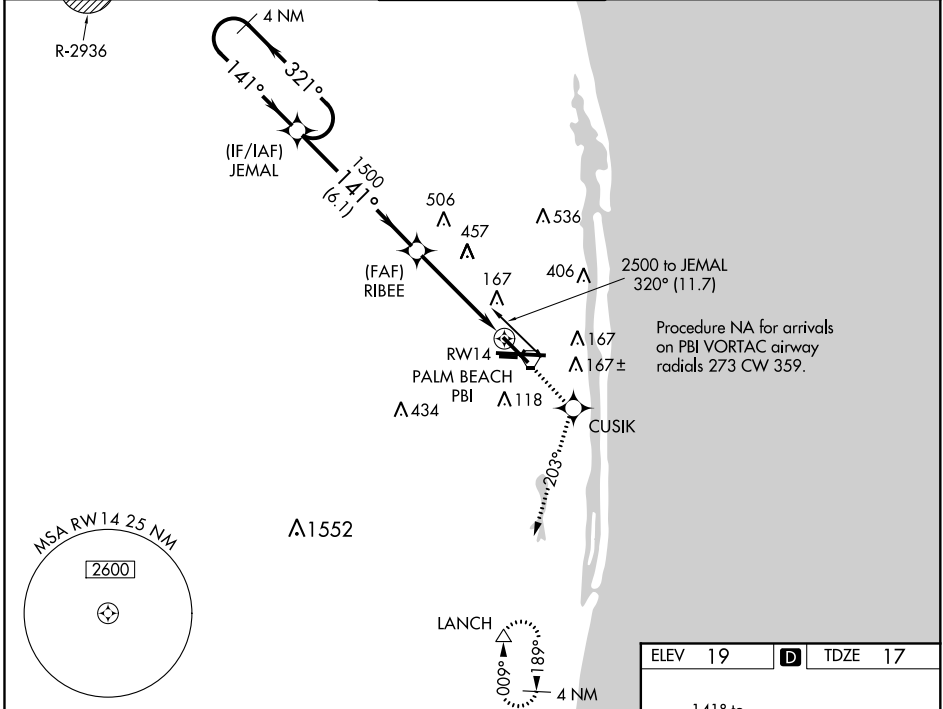
# RNAV (GPS) Y RWY 14

PALM BEACH INTL (PBI)

**▽** For uncompensated Baro-VNAV systems, LNAV/VNAV NA below -15°C (5°F) or above 48°C (118°F).  
**▲** DME/DME RNP-0.3 NA. Visibility reduction by helicopters NA.

MISSED APPROACH: Climb to 2000 direct CUSIK and on track 203° to LANCH and hold.

D-ATIS <b>123.75</b>	PALM BEACH APP CON <b>128.3 317.4</b>	PALM BEACH TOWER <b>119.1 257.8</b>	GND CON <b>121.9 284.6</b>	CLNC DEL <b>121.6 284.6</b>
-------------------------	--	--	-------------------------------	--------------------------------



CATEGORY	A	B	C	D
LPV DA		293-1	276 (300-1)	
LNAV/VNAV DA		475-1½	458 (500-1½)	
LNAV MDA	720-1	703 (800-1)	720-2 703 (800-2)	720-2¼ 703 (800-2¼)
<b>C</b> CIRCLING	720-1	701 (800-1)	720-2 701 (800-2)	780-2½ 760 (800-2½)

HIRL Rwy 10L-28R  
 REIL Rwys 10R, 14, 28L, 28R and 32  
 MIRL Rwys 14-32 and 10R-28L

SE-3, 15 JUL 2021 to 12 AUG 2021

SE-3, 15 JUL 2021 to 12 AUG 2021