

WAAS CH 45518 W28A	APP CRS 279°	Rwy Idg TDZE 18 Apt Elev 20	9189
--	------------------------	---	-------------

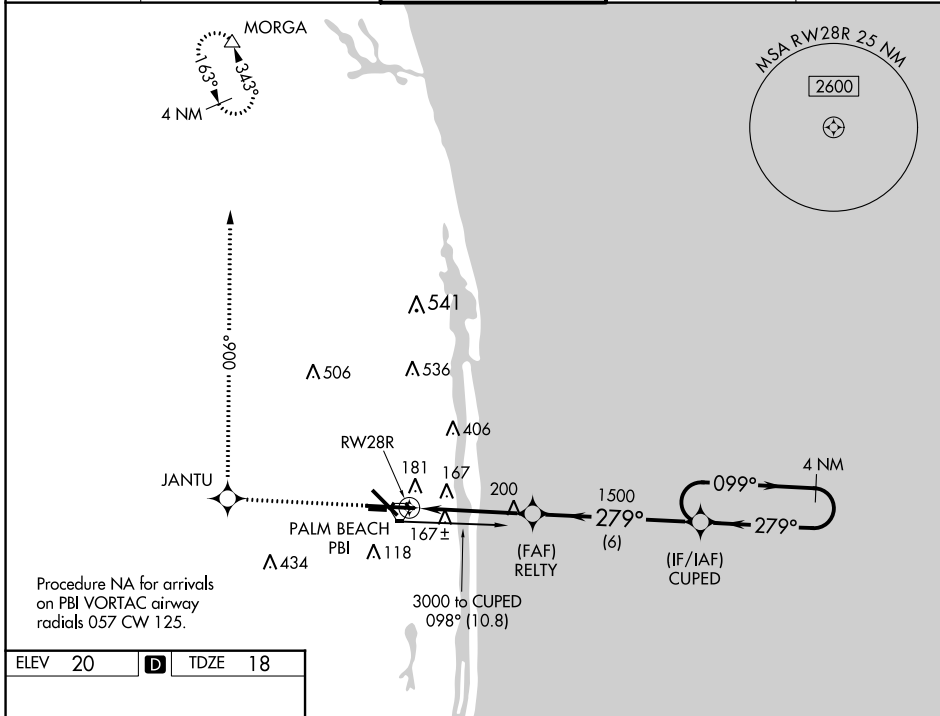
RNAV (GPS) Y RWY 28R

PALM BEACH INTL (PBI)

⚠ For uncompensated Baro-VNAV systems, LNAV/VNAV NA below -15°C (5°F) or above 48°C (118°F).
⚠ DME/DME RNP-0.3 NA.

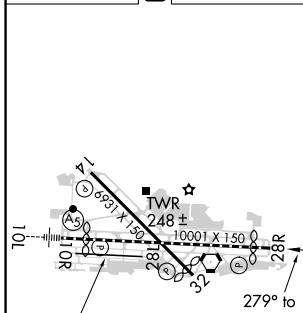
MISSED APPROACH: Climb to 2000 direct JANTU and via track 006° to MORGA and hold.

D-ATIS 123.75	PALM BEACH APP CON 128.3 317.4	PALM BEACH TOWER 119.1 257.8	GND CON 121.9 284.6	CLNC DEL 121.6 284.6
-------------------------	--	--	-------------------------------	--------------------------------

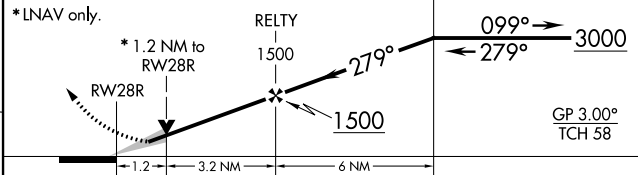


Procedure NA for arrivals on PBI VORTAC airway radials 057 CW 125.

ELEV 20	D	TDZE 18
---------	----------	---------



2000	JANTU	MORGA	VGSI and RNAV glidepath not coincident (VGSI Angle 3.00/TCH 70).
↑	⊙	tr 006°	4 NM Holding Pattern



CATEGORY	A	B	C	D
LPV DA		356/60	338 (400-1½)	
LNAV/VNAV DA		484-1½	466 (500-1½)	
LNAV MDA	460/50	442 (500-1)	460/60 442 (500-1½)	460-1½ 442 (500-1½)
C CIRCLING	560-1	540 (600-1)	680-1¾ 660 (700-1¾)	780-2½ 760 (800-2½)

HIRL Rwy 10L-28R
REIL Rwy 10R, 14, 28L, 28R and 32
MIRL Rwy 14-32 and 10R-28L

SE-3, 15 JUL 2021 to 12 AUG 2021

SE-3, 15 JUL 2021 to 12 AUG 2021