

WAAS CH <b>62903</b> <b>W32A</b>	APP CRS <b>321°</b>	Rwy Idg <b>6513</b> TDZE <b>16</b> Apt Elev <b>20</b>
--	------------------------	---

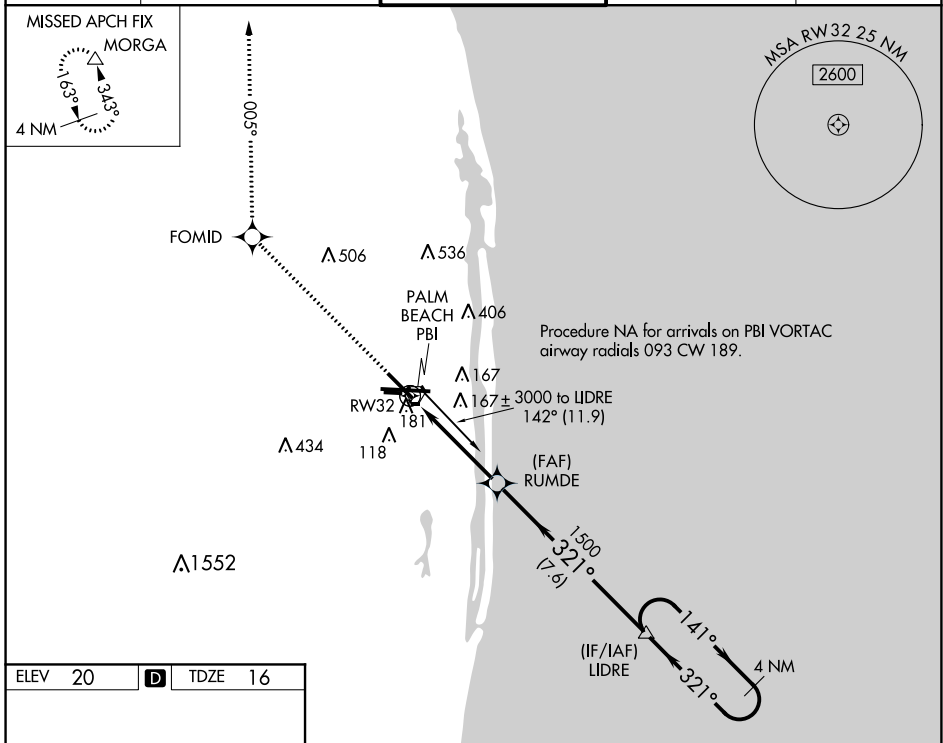
# RNAV (GPS) Y RWY 32

PALM BEACH INTL (PBI)

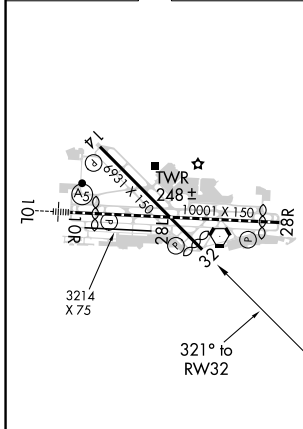
**⚠** For uncompensated Baro-VNAV systems, LNAV/VNAV NA below -15°C (5°F) or above 48°C (118°F). DME/DME RNP-0.3 NA. Helicopter visibility reduction below ¾ SM NA.

MISSED APPROACH: Climb to 2000 direct FOMID and via track 005° to MORGA and hold.

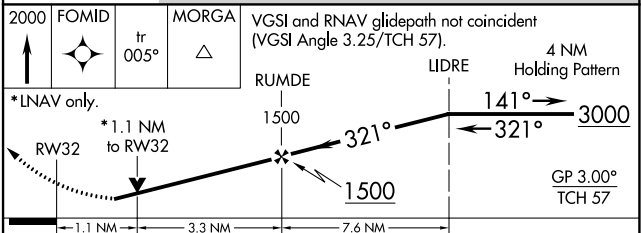
D-ATIS <b>123.75</b>	PALM BEACH APP CON <b>128.3 317.4</b>	PALM BEACH TOWER <b>119.1 257.8</b>	GND CON <b>121.9 284.6</b>	CLNC DEL <b>121.6 284.6</b>
-------------------------	--	--	-------------------------------	--------------------------------



ELEV 20	<b>D</b>	TDZE 16
---------	----------	---------



HIRL Rwy 10L-28R  
REIL Rwys 10R, 14, 28L, 28R and 32  
MIRL Rwys 14-32 and 10R-28L



CATEGORY	A	B	C	D
LPV DA	336-1		320 (400-1)	
LNAV/VNAV DA	431-1½		415 (500-1½)	
LNAV MDA	440-1	424 (500-1)	440-1¼	424 (500-1¼)
<b>C</b> CIRCLING	560-1	540 (600-1)	680-1¾ 660 (700-1¾)	780-2½ 760 (800-2½)

SE-3, 15 JUL 2021 to 12 AUG 2021

SE-3, 15 JUL 2021 to 12 AUG 2021