

# SLIDZ ONE DEPARTURE (RNAV)

SE-3, 15 JUL 2021 to 12 AUG 2021

## DEPARTURE ROUTE DESCRIPTION

**TAKEOFF RWY 10L:** Climb heading 099° to 520, then direct CRRMN, then via depicted route to RBACK, thence. . . .

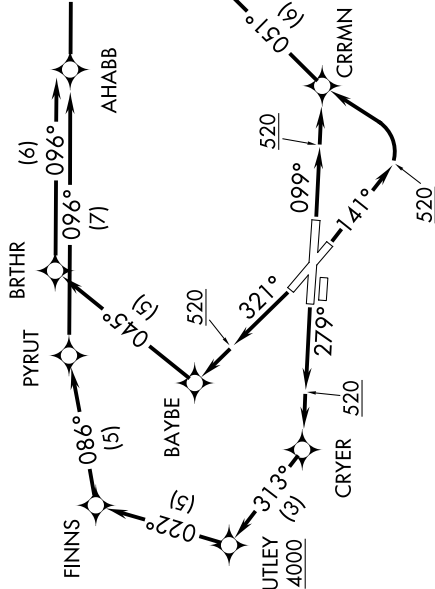
**TAKEOFF RWY 14:** Climb heading 141° to 520, then left turn direct CRRMN, then via depicted route to RBACK, thence. . . .

**TAKEOFF RWY 28R:** Climb heading 279° to 520, then direct CRYER, then via depicted route to RBACK, thence. . . .

**TAKEOFF RWY 32:** Climb heading 321° to 520, then direct BAYBE, then via depicted route to RBACK, thence. . . .

. . . via depicted route to SLIDZ. Maintain 4000 or as assigned by ATC. Expect clearance to filed altitude within 10 minutes after departure.

## AMNDA TRANSITION (SLIDZ1.SLIDZ)



**TOP ALTITUDE:**  
4000

D-ATIS 123.75  
CLINC DEL 121.6 284.6  
GND CON 121.9 284.6  
PALM BEACH TOWER 119.1 257.8  
PALM BEACH DEP CON 128.3 317.4 (North)  
125.2 343.6 (South)

**TAKEOFF MINIMUMS:**  
Rwy 10R, 28L: NA-ATC.  
Rwy 14, 10L, 32: Standard with minimum climb of 500' per NM to 520.  
Rwy 28R: Standard with minimum climb of 500' per NM to 520. ATC climb of 500' per NM to 4000.

**NOTE:** For Turbojets only.  
**NOTE:** If unable to accept minimum climb rates, advise ATC on initial contact.  
**NOTE:** Transponder code will be issued via PDC or Palm Beach CLINC DEL.  
**NOTE:** DME/DME/IRU or GPS required.  
**NOTE:** RADAR required.  
**NOTE:** RNAV 1.  
**NOTE:** For non-GPS equipped aircraft: VRB and PBI DMEs must be operational for takeoff Rwy 10L, 14, 32. VRB, PBI, and PHK DMEs must be operational for takeoff Rwy 28R.

NOTE: Chart not to scale.

# SLIDZ ONE DEPARTURE (RNAV)

(SLIDZ1.SLIDZ) 15OCT15

WEST PALM BEACH, FLORIDA  
PALM BEACH INTL (PBI)

SE-3, 15 JUL 2021 to 12 AUG 2021