

TUXXI THREE ARRIVAL

WEST PALM BEACH, FLORIDA

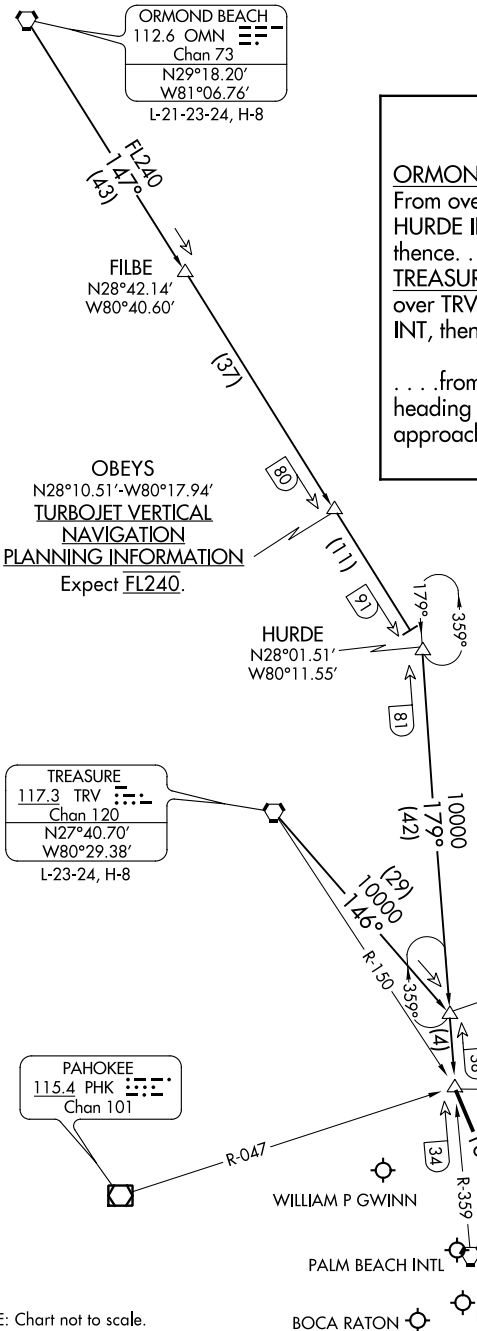
PBI D-ATIS
123.75
PALM BEACH APP CON
128.3 317.4

ARRIVAL ROUTE DESCRIPTION

ORMOND BEACH TRANSITION (OMN.TUXXI3):
From over OMN VORTAC on OMN R-147 to HURDE INT, then on PBI R-359 to STOOP INT, thence. . . .

TREASURE TRANSITION (TRV.TUXXI3):
From over TRV VORTAC on TRV R-146 to TUXXI INT, then on PBI R-359 to STOOP INT, thence. . . .

. . . .from over STOOP INT, depart STOOP INT heading 160° and expect RADAR vectors to final approach course.



NOTE: DME required.
NOTE: Turbojets and Turboprops only.

TREASURE
117.3 TRV
Chan 120
N27°40.70'
W80°29.38'
L-23-24, H-8

PAHOKEE
115.4 PHK
Chan 101

PALM BEACH
115.7 PBI
Chan 104
N26°40.80'
W80°05.19'

OBEYS
N28°10.51'-W80°17.94'
TURBOJET VERTICAL NAVIGATION
PLANNING INFORMATION
Expect FL240.

TUXXI
N27°19.08'-W80°08.19'
TURBOJET VERTICAL NAVIGATION
PLANNING INFORMATION
Expect 10000 and 250K.

STOOP
N27°15.19'
W80°07.88'

NOTE: Chart not to scale.

SE-3, 15 JUL 2021 to 12 AUG 2021

SE-3, 15 JUL 2021 to 12 AUG 2021

TUXXI THREE ARRIVAL

(TUXXI.TUXXI3) 27APR17

WEST PALM BEACH, FLORIDA