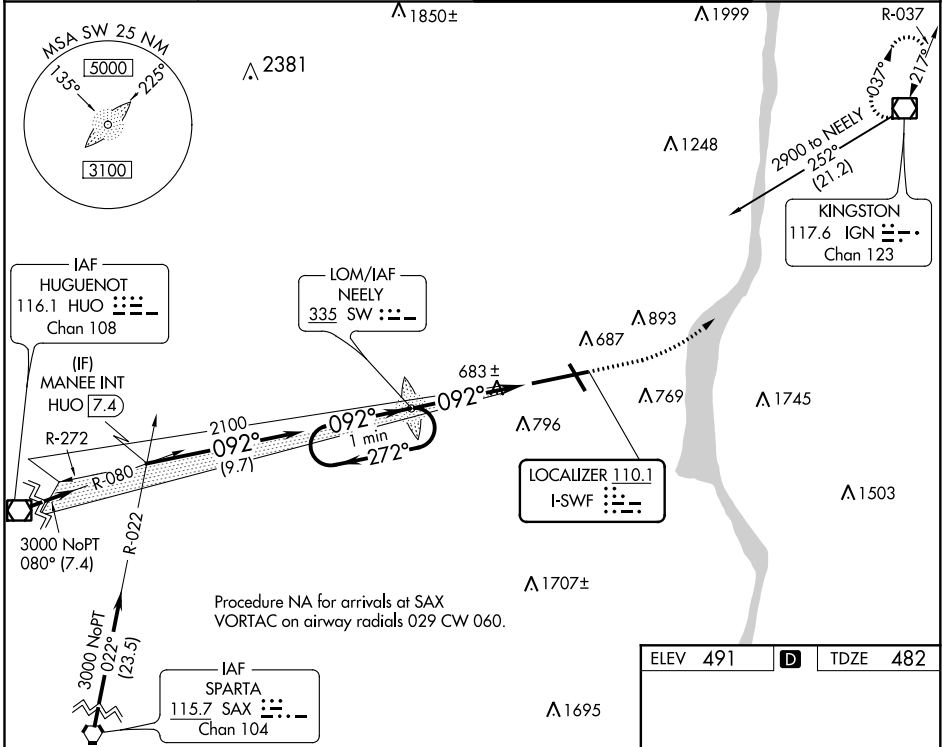


LOC I-SWF <b>110.1</b>	APP CRS <b>092°</b>	Rwy Idg <b>8817</b>
		TDZE <b>482</b>
		Apt Elev <b>491</b>

**ILS RWY 9 (CAT II & III)**  
NEW YORK STEWART INTL (SWF)

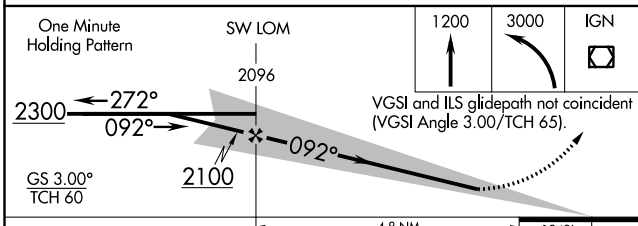
<p><b>⚠</b> CAT II: RVR 1000 authorized with specific OPSEC, MSPEC, or LOA and use of autoland or HUD to touchdown.</p>	<p>ALS-F-2</p>	<p>MISSED APPROACH: Climb to 1200 then climbing left turn to 3000 direct IGN VOR/DME and hold.</p>
---	----------------	--

<p>ATIS <b>124.575</b></p>	<p>NEW YORK APP CON <b>132.75 363.1</b></p>	<p>STEWART TOWER <b>121.0 254.4</b></p>	<p>GND CON <b>121.9</b></p>
--------------------------------	---	---	---------------------------------

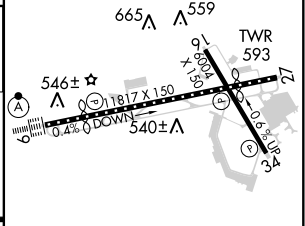


NE-2, 15 JUL 2021 to 12 AUG 2021

NE-2, 15 JUL 2021 to 12 AUG 2021



ELEV 491	D	TDZE 482
----------	---	----------



CATEGORY	A	B	C	D
S-ILS 9		CAT II	RA 97/12	100 DA 582
S-ILS 9			CAT IIIa	RVR 07
S-ILS 9			CAT IIIb	RVR 06
S-ILS 9			CAT IIIc	NA

**CATEGORY II & III ILS SPECIAL AIRCREW & AIRCRAFT CERTIFICATION REQUIRED**

TDZ/CL Rwy 9  
HIRL Rwy 9-27 and 16-34  
REIL Rwy 16, 27 and 34