

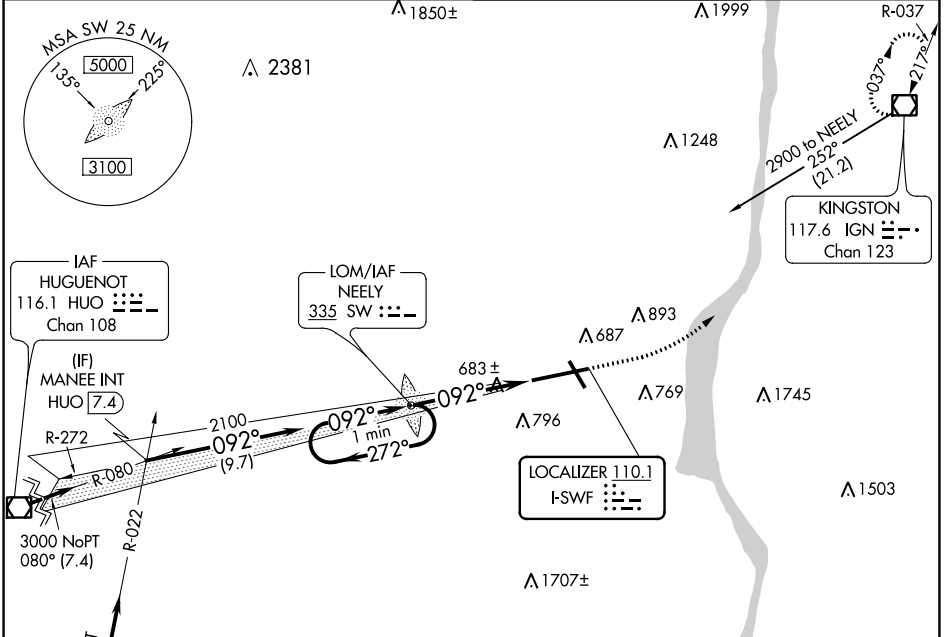
LOC I-SWF 110.1	APP CRS 092°	Rwy Idg 8817
		TDZE 482
		Apt Elev 491

ILS or LOC RWY 9

NEW YORK STEWART INTL (SWF)

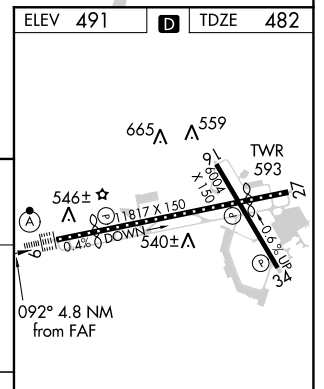
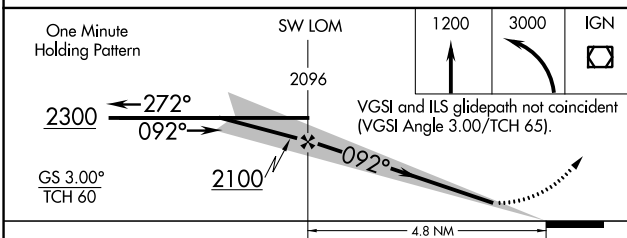
	ALSF-2	MISSED APPROACH: Climb to 1200 then climbing left turn to 3000 direct IGN VOR/DME and hold.

ATIS 124.575	NEW YORK APP CON 132.75 363.1	STEWART TOWER 121.0 254.4	GND CON 121.9
------------------------	---	-------------------------------------	-------------------------



Procedure NA for arrivals at SAX
VORTAC on airway radials 029 CW 060.

IAF SPARTA
115.7 SAX
Chan 104



CATEGORY	A	B	C	D
S-ILS 9	682/18 200 (200-½)			
S-LOC 9	940/24 458 (500-½)	940/50 458 (500-1)		
CIRCLING	1200-1 709 (800-1)	1200-2 709 (800-2)	1200-2¼ 709 (800-2¼)	

TDZ/CL Rwy 9	HIRL Rwy 9-27 and 16-34 REIL Rwy 16, 27 and 34				
FAF to MAP 4.8 NM					
Knots	60	90	120	150	180
Min:Sec	4:48	3:12	2:24	1:55	1:36

NE-2, 15 JUL 2021 to 12 AUG 2021

NE-2, 15 JUL 2021 to 12 AUG 2021