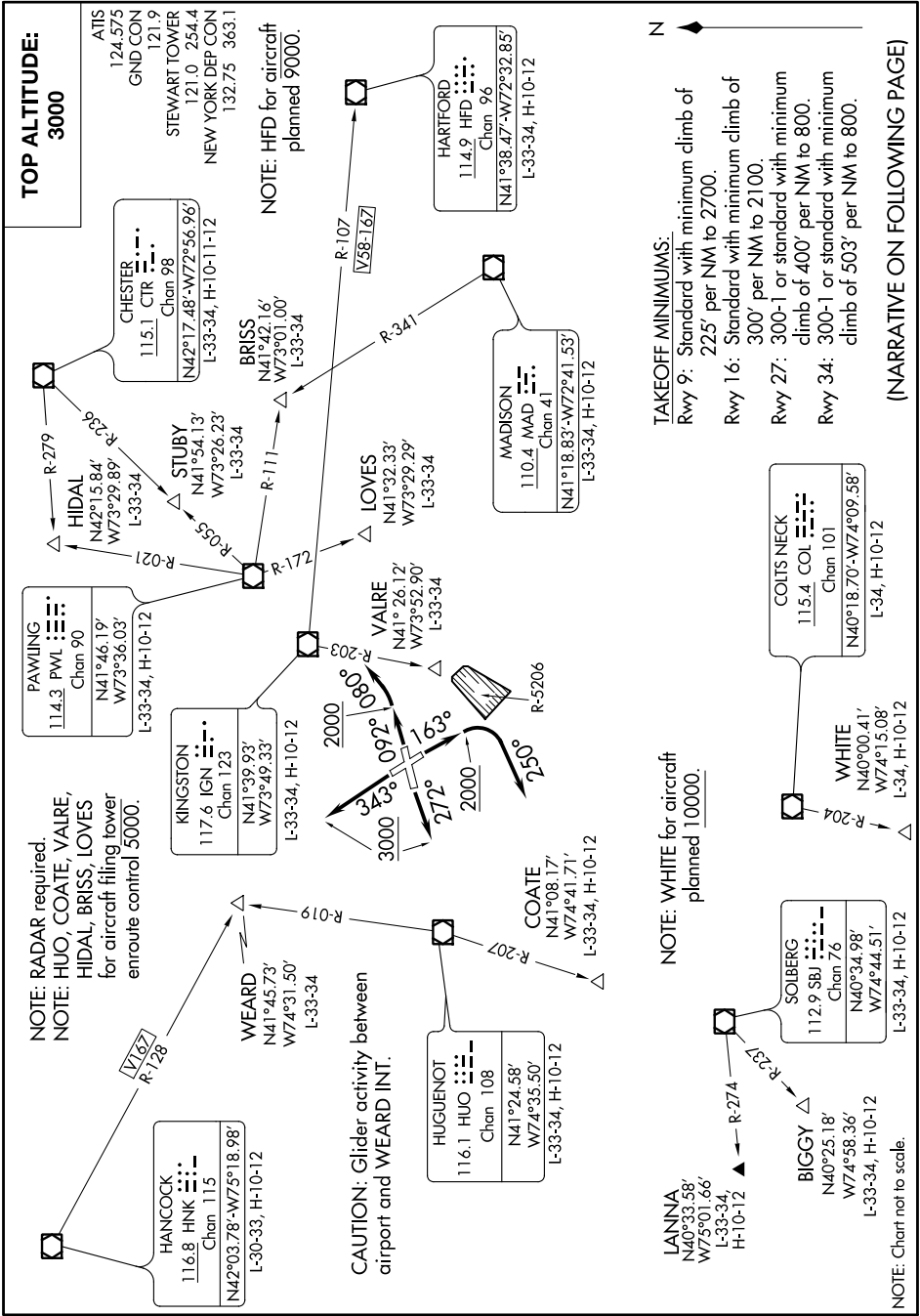


# STEWART NINE DEPARTURE

AL-450 (FAA)

NEW YORK STEWART INTL (SWF)  
NEW YORK, NEW YORK

NE-2, 15 JUL 2021 to 12 AUG 2021



# STEWART NINE DEPARTURE

NE-2, 15 JUL 2021 to 12 AUG 2021

(NARRATIVE ON FOLLOWING PAGE)

**TOP ALTITUDE: 3000**

**NOTE: HFD for aircraft planned 9000.**

**TAKEOFF MINIMUMS:**  
 Rwy 9: Standard with minimum climb of 225' per NM to 2700.  
 Rwy 16: Standard with minimum climb of 300' per NM to 2100.  
 Rwy 27: 300-1 or standard with minimum climb of 400' per NM to 800.  
 Rwy 34: 300-1 or standard with minimum climb of 503' per NM to 800.

**NOTE: WHITE for aircraft planned 10000.**

**NOTE: RADAR required.**  
**NOTE: HIO, COATE, VAIRE, HIDAL, BRISS, LOVES for aircraft filing tower enroute control 5000.**

**CAUTION: Glider activity between airport and WEARD INT.**

**NOTE: Chart not to scale.**