

HI-TACAN RWY 14

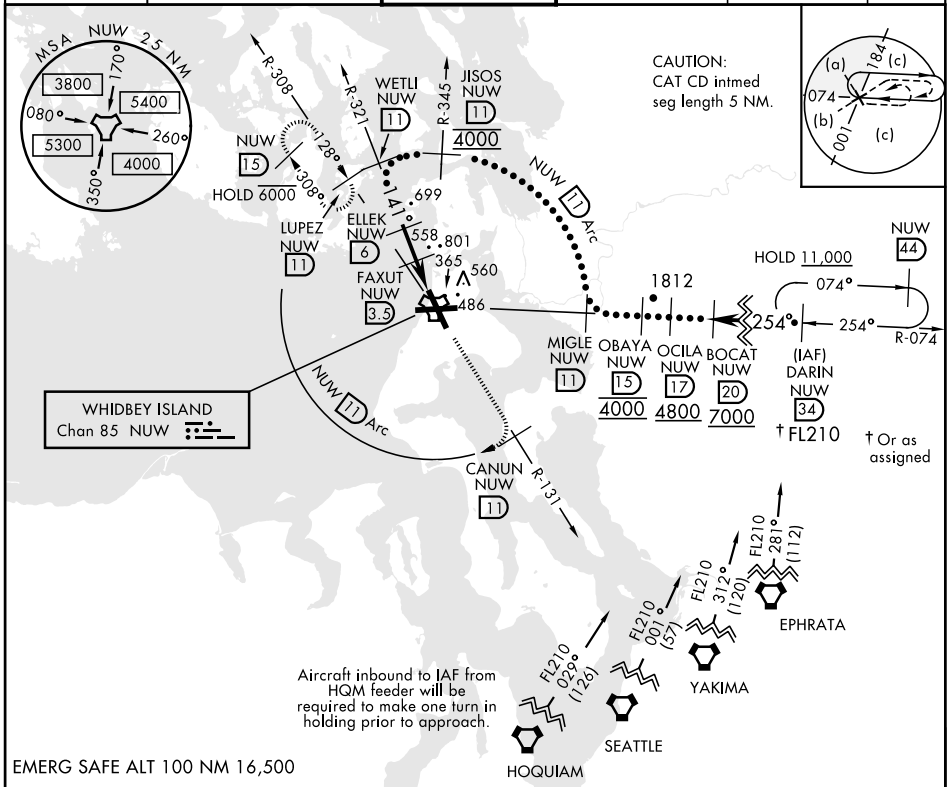
TACAN NUW Chan 85	APCH CRS 141°	Rwy Idg 8000 TDZE 39 Arpt Elev 47	AL-451 [USN]	WHIDBEY ISLAND NAS (AULT FLD) (KNUW)
--------------------------	----------------------	--	--------------	--------------------------------------

* When ALS inop, increase vis to 1 1/2 miles.

ALS F-2

MISSED APPROACH: Climb to 4000 via NUW TACAN R-131 to CANUN, then arc SW of NUW TACAN via 11 DME Arc to LUPEZ and hold.

ATIS 134.15 281.5	WHIDBEY APP CON 120.7 270.8 EAST 118.2 285.65 WEST	WHIDBEY TOWER 127.9 340.2	GND CON 121.75 336.4	CLNC DEL 135.1 379.9	ASR/PAR
--------------------------	---	----------------------------------	-----------------------------	-----------------------------	---------



	<table border="1"> <tr> <td>4000 NUW R-131</td> <td>CANUN NUW 11</td> <td>NUW 11 Arc</td> </tr> </table>	4000 NUW R-131	CANUN NUW 11	NUW 11 Arc	ELEV 47	TDZE 39
4000 NUW R-131	CANUN NUW 11	NUW 11 Arc				
CATEGORY	C	D	E			
S-14 *	480-7/8	441 (500-7/8)				
CIRCLING	900-2 1/2 853 (900-2 1/2)	900-2 3/4 853 (900-2 3/4)	1200-3 1153 (1200-3)			
TDZ/CL Rwy 14 HIRL Rwy 7-25, 14-32						

HI-TACAN RWY 14

NW-1, 15 JUL 2021 to 12 AUG 2021

NW-1, 15 JUL 2021 to 12 AUG 2021