

# HI-TACAN RWY 32

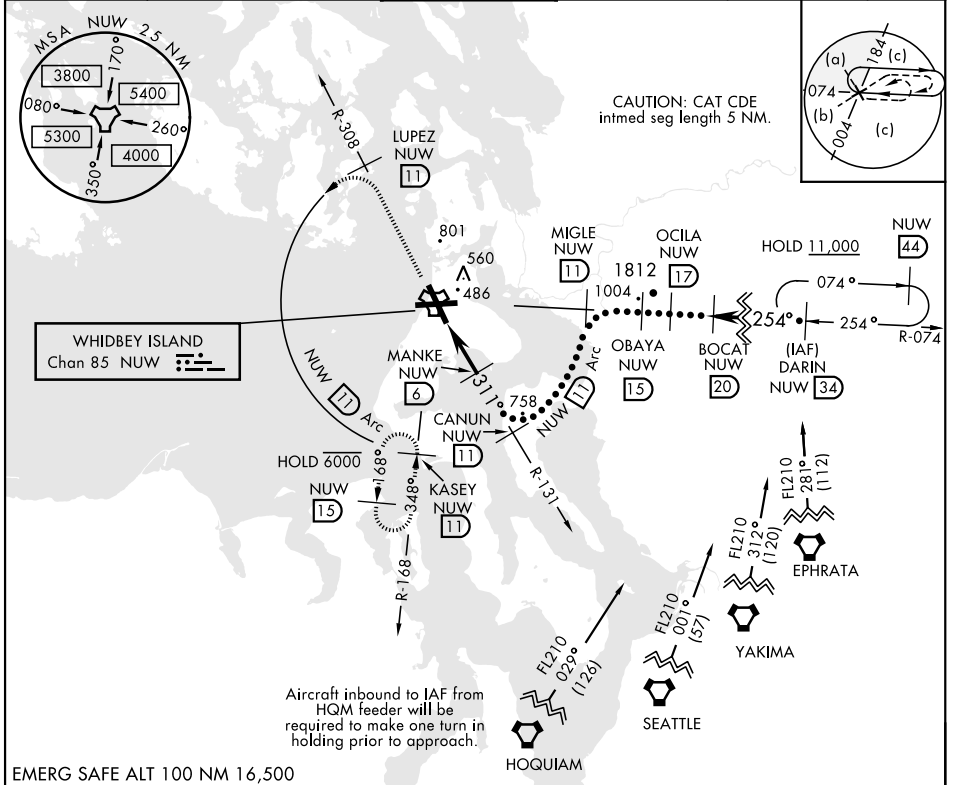
TACAN Chan <b>85</b>	APCH CRS <b>311°</b>	Rwy Idg TDZE <b>47</b> Arpt Elev <b>47</b>	AL-451 [USN]	WHIDBEY ISLAND NAS (AULT FLD) (KNUW)
-------------------------	-------------------------	--	--------------	--------------------------------------

**▼** \* When ALS inop, increase CAT CDE vis to 1 3/8 miles.

ALSF-2

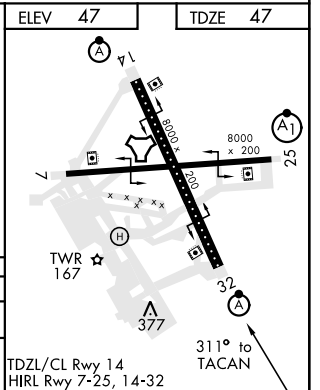
MISSED APPROACH: Climb to 3000 via NUW TACAN R-308 to LUPEZ, then arc W of NUW via 11 DME Arc to KASEY and hold.

ATIS <b>134.15 281.5</b>	WHIDBEY APP CON <b>120.7 270.8 (EAST)</b> <b>118.2 285.65 (WEST)</b>	WHIDBEY TOWER <b>127.9 340.2</b>	GND CON <b>121.75 336.4</b>	CLNC DEL <b>135.1 379.9</b>	ASR/PAR
-----------------------------	--	-------------------------------------	--------------------------------	--------------------------------	---------



EMERG SAFE ALT 100 NM 16,500

3000 NUW R-308	LUPEZ NUW 11	NUW Arc 11	DARIN R-074 NUW 34		
TACAN	NAVOE 1.8	MANKE 6	CANUN R-131 11	MIGLE R-074 11	OBAYA 15
	4.2 NM	1800	3000 Arc 11	4000	4000
			311°	4800	7000
					254°
					FL 210
					↑ Or as assigned
					3.16° TCH 55
CATEGORY	C		D		E
S-32*	660-1 3/8		613 (700-1 3/8)		
CIRCLING	900-2 1/2 853 (900-2 1/2)		900-2 3/4 853 (900-2 3/4)		1200-3 1153 (1200-3)



# HI-TACAN RWY 32

NW-1, 15 JUL 2021 to 12 AUG 2021

NW-1, 15 JUL 2021 to 12 AUG 2021