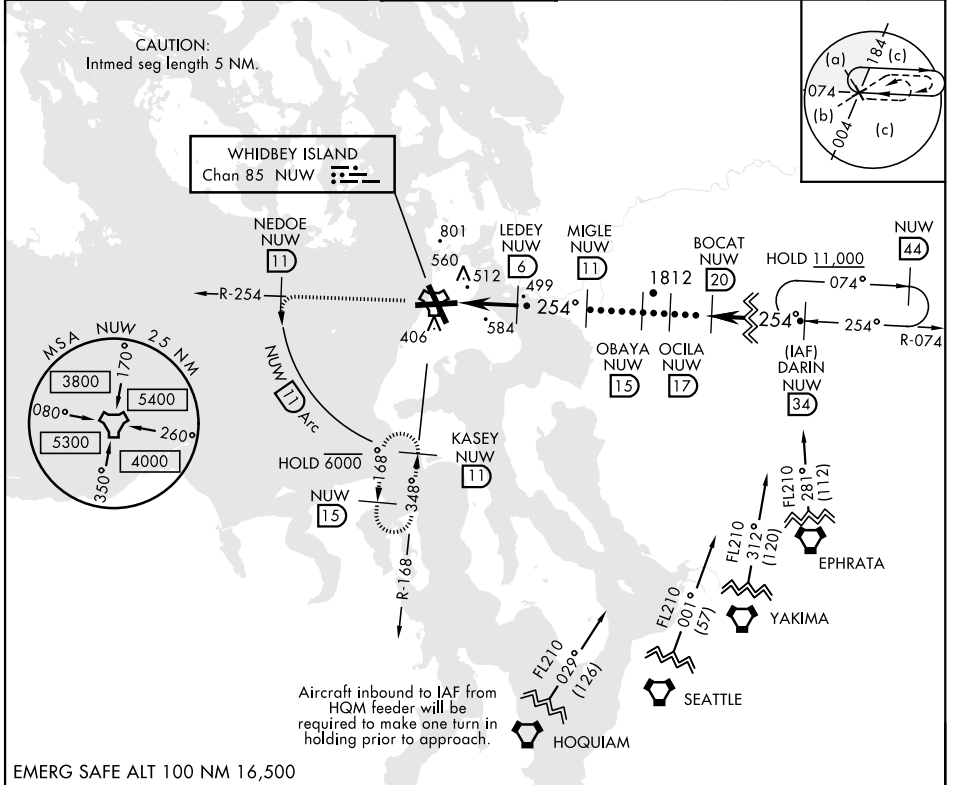


# HI-TACAN Z RWY 25

TACAN NUW Chan 85	APCH CRS 254°	Rwy Idg 8000 TDZE 28 Arpt Elev 47	AL-451 [USN]	WHIDBEY ISLAND NAS (AULT FLD) (KNUW)
-------------------	---------------	---	--------------	--------------------------------------

<p>▼ * When ALS inop, increase CAT CDE vis to 2 miles.</p>	<p>ALSF-1</p>	<p>MISSED APPROACH: Climb to 3000 via NUW TACAN R-254 to NEDOE, then arc SW of NUW via 11 DME arc to KASEY and hold.</p>
--	---------------	--

<p>ATIS 134.15 281.5</p>	<p>WHIDBEY APP CON 120.7 270.8 (EAST) 118.2 285.65 (WEST)</p>	<p>WHIDBEY TOWER 127.9 340.2</p>	<p>GND CON 121.75 336.4</p>	<p>CLNC DEL 135.1 379.9</p>	<p>ASR/PAR</p>
--------------------------	---	----------------------------------	-----------------------------	-----------------------------	----------------



<p>3000 NUW R-254</p> <p>NEDOE NUW 11</p> <p>NUW 11 Arc</p>	<p>DARIN R-074 NUW 34</p>	<p>ELEV 47</p> <p>TDZE 28</p>												
<p>TACAN</p> <p>KIGVE 1.7</p> <p>LEDEY 6</p> <p>MIGLE 11</p> <p>OBAYA 15</p> <p>OCILA 17</p> <p>BOCAT 20</p> <p>FL 210 Or as assigned</p> <p>3.16° TCH 55</p>														
<table border="1"> <tr> <th>CATEGORY</th> <th>C</th> <th>D</th> <th>E</th> </tr> <tr> <td>S-25*</td> <td>740-1 5/8</td> <td>712</td> <td>(700-1 1/8)</td> </tr> <tr> <td>CIRCLING</td> <td>900-2 1/2 853 (900-2 1/2)</td> <td>900-2 3/4 853 (900-2 3/4)</td> <td>1200-3 1153 (1200-3)</td> </tr> </table>	CATEGORY	C	D	E	S-25*	740-1 5/8	712	(700-1 1/8)	CIRCLING	900-2 1/2 853 (900-2 1/2)	900-2 3/4 853 (900-2 3/4)	1200-3 1153 (1200-3)	<p>TDZL/CL Rwy 14</p> <p>HIRL Rwy 7-25, 14-32</p>	
CATEGORY	C	D	E											
S-25*	740-1 5/8	712	(700-1 1/8)											
CIRCLING	900-2 1/2 853 (900-2 1/2)	900-2 3/4 853 (900-2 3/4)	1200-3 1153 (1200-3)											

# HI-TACAN Z RWY 25

NW-1, 15 JUL 2021 to 12 AUG 2021

NW-1, 15 JUL 2021 to 12 AUG 2021