

# NASWI TWO (OBSTACLE) DEPARTURE

WHIDBEY ISLAND NAS (AULT FLD) (KNUW)

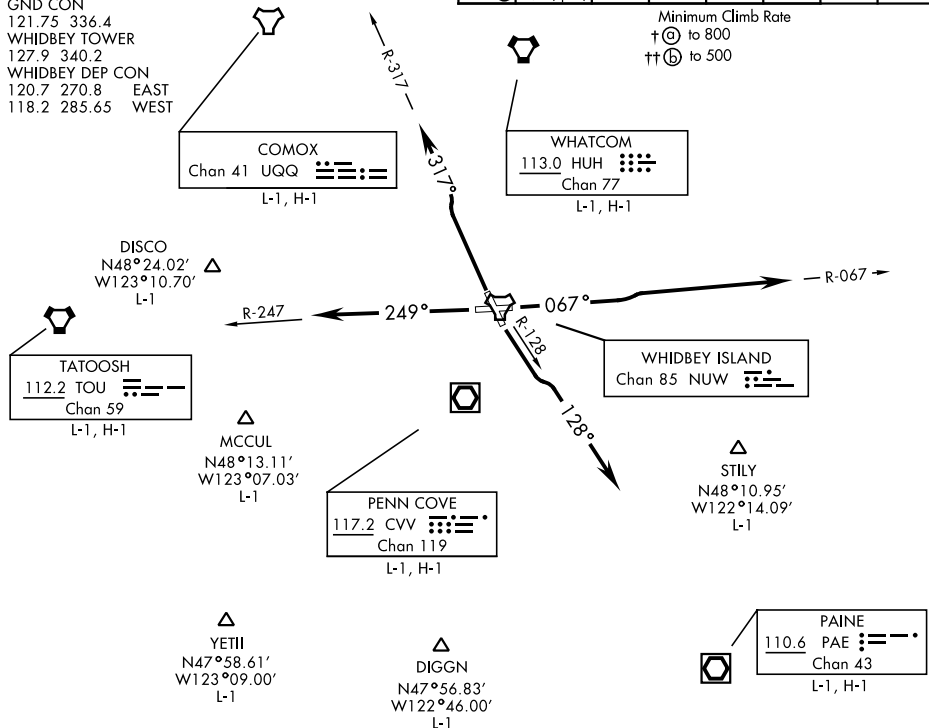
OAK HARBOR, WASHINGTON

ATIS 134.15 281.5  
 CLNC DEL  
 135.1 379.9  
 GND CON  
 121.75 336.4  
 WHIDBEY TOWER  
 127.9 340.2  
 WHIDBEY DEP CON  
 120.7 270.8 EAST  
 118.2 285.65 WEST

SL-451 [USN]

Rwy	Knots	60	120	180	240	300	360
7 (a)	V/V(fpm)	410	820	1230	1640	2050	2460
7 (b)	V/V(fpm)	275	550	825	1100	1375	1650

Minimum Climb Rate  
 † (a) to 800  
 †† (b) to 500



NOTE: Chart not to scale

## DEPARTURE ROUTE DESCRIPTION

### MILITARY DEPARTURE PROCEDURE:

- †RWY 7: Climbing left turn to 2000, intercept NUW TACAN R-067, then radar vectors to assigned route.
- RWY 14: Climbing left turn to 2000, intercept NUW TACAN R-128, then radar vectors to assigned route.
- RWY 25: Climb to 2000, intercept NUW TACAN R-247, then radar vectors to assigned route.
- RWY 32: Climb to 2000 via R-317, then radar vectors to assigned route.

All RWYS: If control instructions are not received by 10 DME of NUW TACAN, climb to 3000, intercept the NUW 11 DME ARC to join assigned route.

### CIVIL DEPARTURE PROCEDURE:

- ††RWY 7: Climb to 2000 via heading 067°, then radar vectors to assigned route.
- RWY 14: Climbing left turn to 2000 via heading 128°, then radar vectors to assigned route.
- RWY 25: Climb to 2000 via heading 249°, then radar vectors to assigned route.
- RWY 32: Climb to 2000 via heading 317°, then radar vectors to assigned route.

All RWYS: If control instructions are not received by 10 DME of NUW TACAN, climb to 3000, proceed direct CVV VOR/DME to join assigned route.

# NASWI TWO (OBSTACLE) DEPARTURE

Amdt 1 21MAY20

OAK HARBOR, WASHINGTON

WHIDBEY ISLAND NAS (AULT FLD) (KNUW)

NW-1, 15 JUL 2021 to 12 AUG 2021

NW-1, 15 JUL 2021 to 12 AUG 2021