

OAK HARBOR, WASHINGTON

# TACAN RWY 25

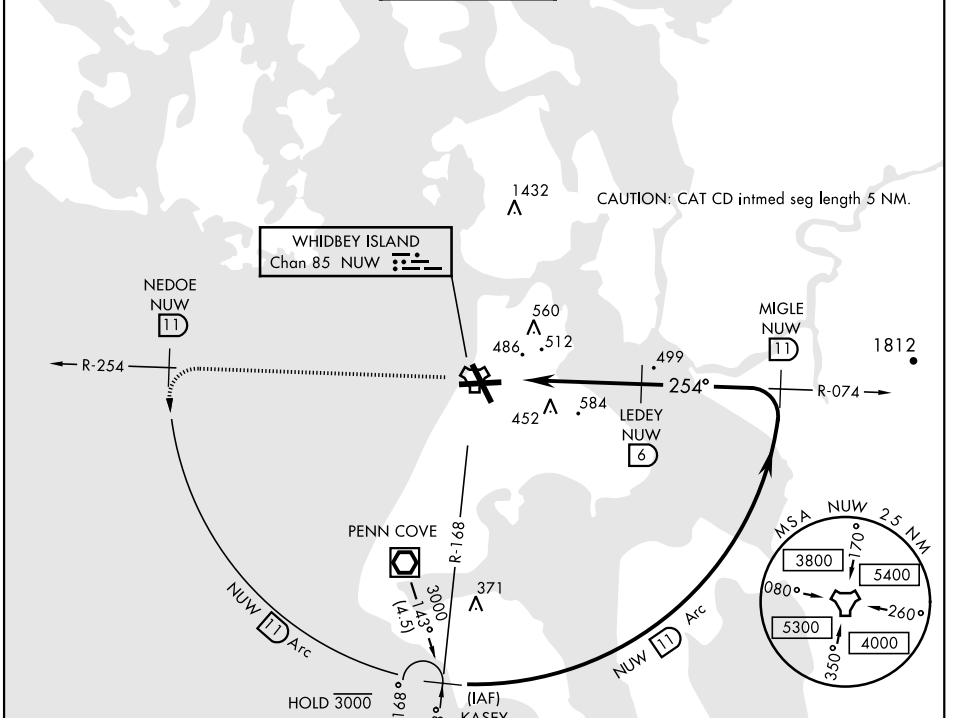
TACAN Chan <b>85</b>	APCH CRS <b>254°</b>	Rwy Idg TDZE Arprt Elev <b>8000</b> <b>28</b> <b>47</b>
-------------------------	-------------------------	--

AL-451 [USN]

WHIDBEY ISLAND NAS (AULT FLD) (KNUW)

<p>▼ * When ALS inop, increase CAT AB vis to 1 mile, CAT CD to 2 miles.</p>	ALS-F-1 	MISSED APPROACH: Climb to 3000 via NUW TACAN R-254 to NEDOE, then arc SW of NUW via 11 DME Arc to KASEY and hold.

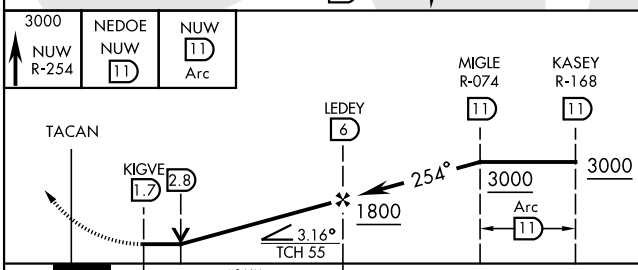
ATIS <b>134.15 281.5</b>	WHIDBEY APP CON <b>120.7 270.8</b> (EAST) <b>118.2 285.65</b> (WEST)	WHIDBEY TOWER <b>127.9 340.2</b>	GND CON <b>121.75 336.4</b>	CLNC DEL <b>135.1 379.9</b>	ASR/PAR
-----------------------------	--	-------------------------------------	--------------------------------	--------------------------------	---------



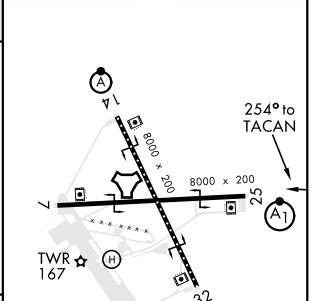
NW-1, 15 JUL 2021 to 12 AUG 2021

NW-1, 15 JUL 2021 to 12 AUG 2021

EMERG SAFE ALT 100 NM 16,500



ELEV 47	TDZE 28
---------	---------



CATEGORY	A	B	C	D
S-25 *	740- $\frac{5}{8}$ 712 (700- $\frac{5}{8}$ )		740-1 $\frac{5}{8}$ 712 (700-1 $\frac{5}{8}$ )	
CIRCLING	760-1 713 (800-1)	800-1 753 (800-1)	900-2 $\frac{1}{2}$ 853 (900-2 $\frac{1}{2}$ )	900-2 $\frac{3}{4}$ 853 (900-2 $\frac{3}{4}$ )

TDZL/CL Rwy 14  
HIRL Rwy 7-25, 14-32

OAK HARBOR, WASHINGTON

48° 21' N 122° 39' W

WHIDBEY ISLAND NAS (AULT FLD) (KNUW)

Amdt 2 21MAY20

# TACAN RWY 25