

TACAN RWY 32

TACAN NUW Chan 85	APCH CRS 311°	Rwy ldg 8000 TDZE 47 Arprt Elev 47
-----------------------------	-------------------------	---------------------------------------------------------------

AL-451 [USN]

WHIDBEY ISLAND NAS (AULT FLD) (KNUW)

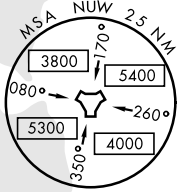
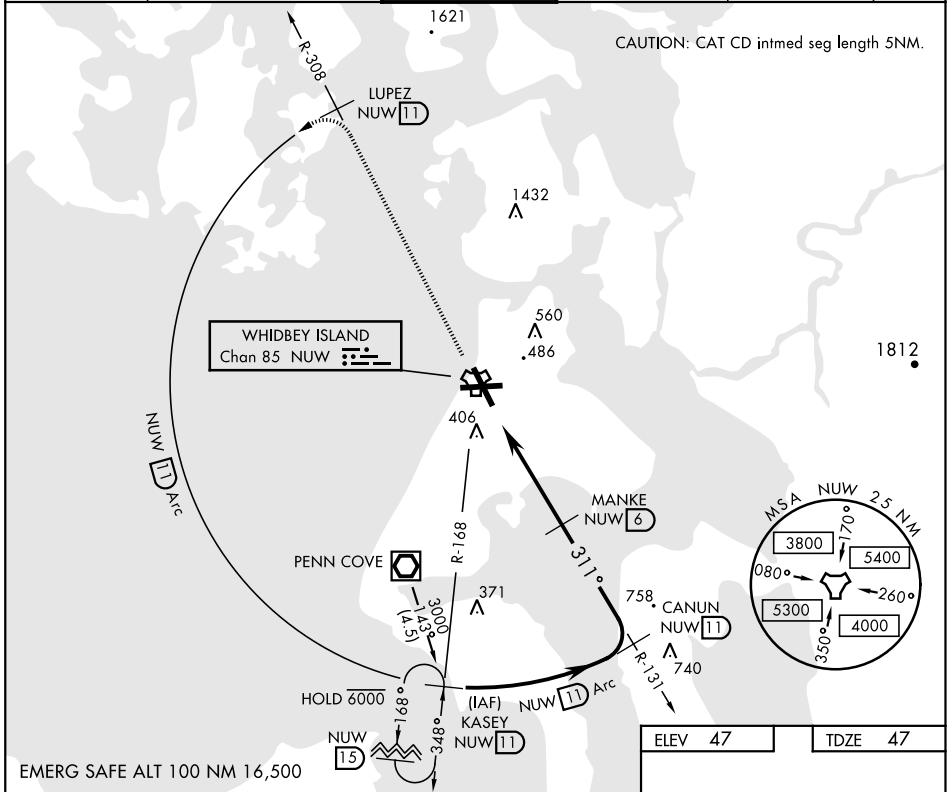
▼ * When ALS inop, increase CAT AB vis to 1 mile, CAT CD to 1¼ miles.



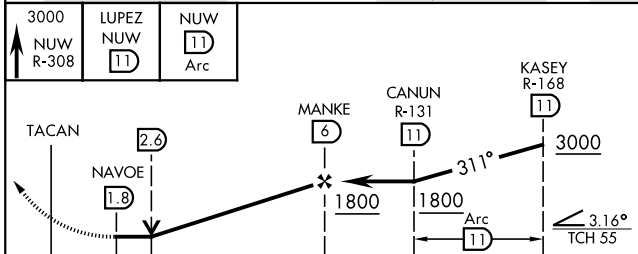
MISSED APPROACH: Climb to 3000 via NUW TACAN R-308 to LUPEZ, then Arc SW of NUW via 11 DME Arc to KASEY and hold.

ATIS 134.15 281.5	WHIDBEY APP CON 120.7 270.8 (EAST) 118.2 285.65 (WEST)	WHIDBEY TOWER 127.9 340.2	GND CON 121.75 336.4	CLNC DEL 135.1 379.9	ASR/PAR
-----------------------------	----------------------------------------------------------------------------	-------------------------------------	--------------------------------	--------------------------------	---------

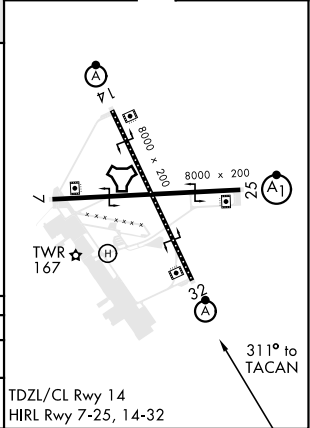
CAUTION: CAT CD intmed seg length 5NM.



EMERG SAFE ALT 100 NM 16,500



ELEV 47	TDZE 47
---------	---------



CATEGORY	A	B	C	D
S-32*	660-5/8 613 (700-5/8)	660-13/8 613 (700-13/8)		
CIRCLING	760-1 713 (800-1)	800-1 753 (800-1)	900-2 1/2 853 (900-2 1/2)	900-2 3/4 853 (900-2 3/4)

TDZL/CL Rwy 14
HIRL Rwy 7-25, 14-32

TACAN RWY 32

NW-1, 15 JUL 2021 to 12 AUG 2021

NW-1, 15 JUL 2021 to 12 AUG 2021