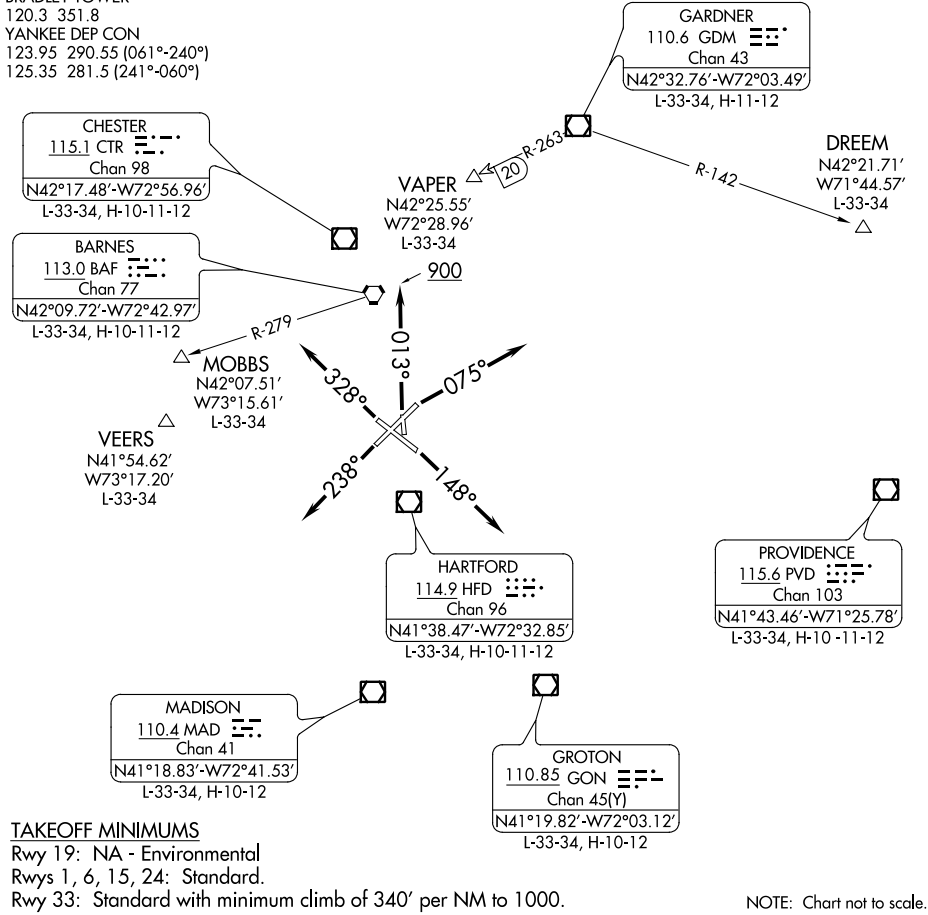


# BRADLEY FIVE DEPARTURE

**TOP ALTITUDE:  
4000**

D-ATIS 118.15  
CLNC DEL  
121.75 322.3  
GND CON  
121.9 348.6  
CPDLC  
BRADLEY TOWER  
120.3 351.8  
YANKEE DEP CON  
123.95 290.55 (061°-240°)  
125.35 281.5 (241°-060°)

NOTE: RADAR required.  
NOTE: Initial departure headings are predicated on avoiding noise sensitive areas, flight crew awareness and compliance is important in minimizing noise impacts on surrounding communities.  
NOTE: Appropriate departure frequency to be assigned by ATC.



### TAKEOFF MINIMUMS

Rwy 19: NA - Environmental  
Rwys 1, 6, 15, 24: Standard.  
Rwy 33: Standard with minimum climb of 340' per NM to 1000.

NOTE: Chart not to scale.

### DEPARTURE ROUTE DESCRIPTION

- TAKEOFF RUNWAY 1: Climb heading 013° to 900, then as assigned, thence....
- TAKEOFF RUNWAY 6: Climb heading 075° or as assigned, thence....
- TAKEOFF RUNWAY 15: Climb heading 148° or as assigned, thence....
- TAKEOFF RUNWAY 24: Climb heading 238° or as assigned, thence....
- TAKEOFF RUNWAY 33: Climb heading 328° or as assigned, thence....

....on RADAR vectors to filed/assigned route or depicted fix. Maintain 4000 or assigned altitude, expect clearance to requested altitude/flight level 10 minutes after departure.

NE-1, 15 JUL 2021 to 12 AUG 2021

NE-1, 15 JUL 2021 to 12 AUG 2021