

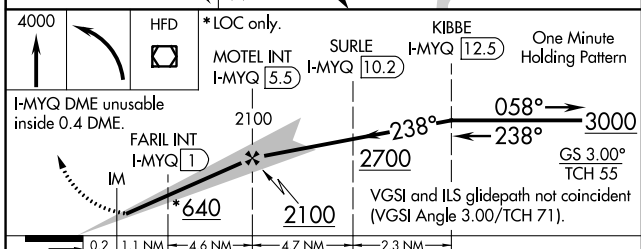
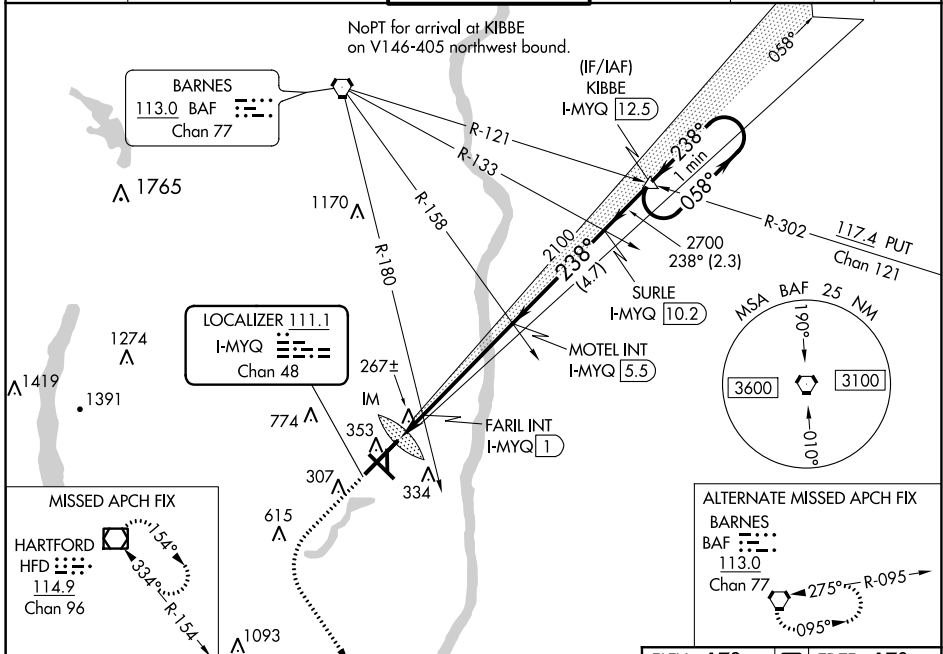
LOC/DME I-MYQ <b>111.1</b> Chan <b>48</b>	APP CRS <b>238°</b>	Rwy Idg <b>9509</b> TDZE <b>170</b> Apt Elev <b>173</b>
---	------------------------	---

# ILS or LOC RWY 24

BRADLEY INTL (BDL)

<p>Circling Rwy 19 NA at night. For inop ALS, increase S-LOC 24 Cat C/D visibility to 1½ SM. FARIL fix minimums: For inop ALS, increase S-LOC 24 Cat C/D visibility to RVR 5500.</p>	<p>MALS</p>	<p>MISSED APPROACH: Climb to 4000 then left turn direct HFD VOR/DME and hold.</p>

D-ATIS <b>118.15</b>	YANKEE APP CON <b>123.95 290.55</b> (061°-240°) <b>125.35 281.5</b> (241°-060°)	BRADLEY TOWER <b>120.3 351.8</b>	GND CON <b>121.9 348.6</b>	CLNC DEL <b>121.75 322.3</b>	CPDLC
-------------------------	---	-------------------------------------	-------------------------------	---------------------------------	-------



ELEV 173	TDZE 170
<p>238° 5.9 NM from FAF</p>	
<p>TDZ/CL Rwy 6 and 24 HIRL Rwys 6-24 and 15-33 MIRL Rwy 1-19 REIL Rwys 6 and 15</p>	
<p>FAF to MAP 5.9 NM</p>	
Knots	60 90 120 150 180
Min:Sec	5:54 3:56 2:57 2:22 1:58

CATEGORY	A	B	C	D
S-ILS 24	370/18		200 (200-½)	
S-LOC 24	640/24	470 (500-½)	640/50	470 (500-1)
CIRCLING	700-1	527 (600-1)	1120-2¾ 947 (1000-2¾)	1220-3 1047 (1100-3)
FARIL FIX MINIMUMS (DUAL VOR RECEIVERS OR DME REQUIRED)				
S-LOC 24	520/24	350 (400-½)	520/30	350 (400-¾)
CIRCLING	700-1	527 (600-1)	1120-2¾ 947 (1000-2¾)	1220-3 1047 (1100-3)

NE-1, 15 JUL 2021 to 12 AUG 2021

NE-1, 15 JUL 2021 to 12 AUG 2021