

WAAS CH <b>65628</b> <b>W33A</b>	APP CRS <b>328°</b>	Rwy Idg TDZE Apt Elev	<b>6847</b> <b>171</b> <b>173</b>
--	------------------------	-----------------------------	---

# RNAV (GPS) RWY 33

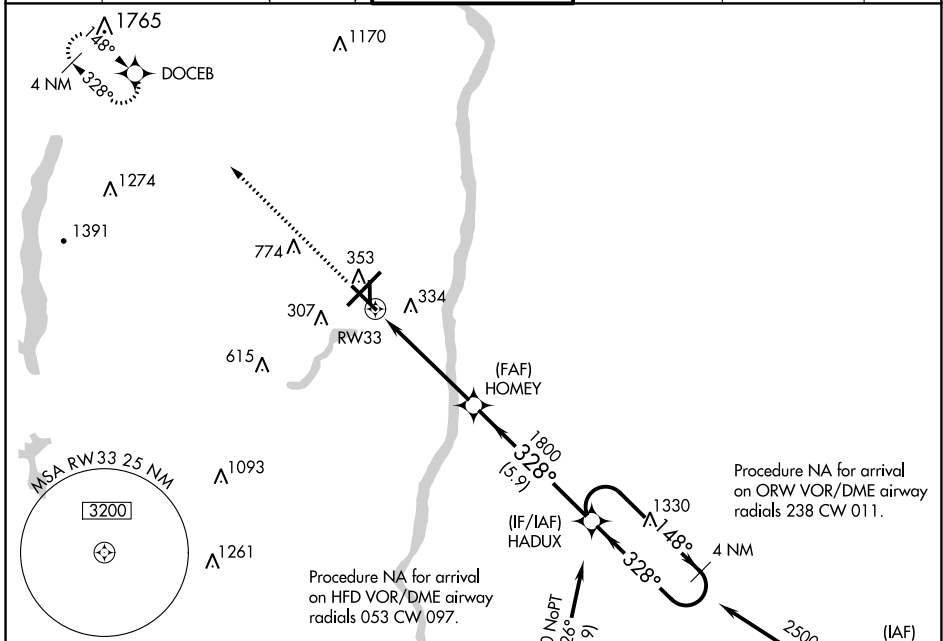
BRADLEY INTL (BDL)

**⚠** Inop table does not apply to LPV all Cats. For uncompensated Baro-VNAV systems, LNAV/VNAV NA below -17°C (2°F) or above 54°C (130°F). Circling Rwy 19 NA at night. DME/DME RNP-0.3 NA. For inop ALS, increase LNAV/VNAV all Cats visibility to RVR 4500.

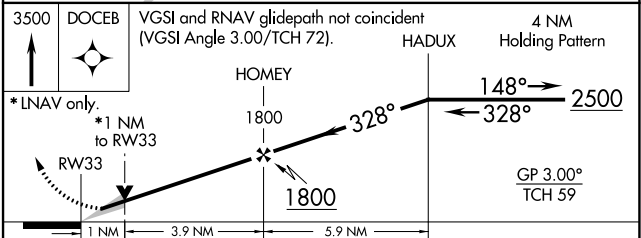
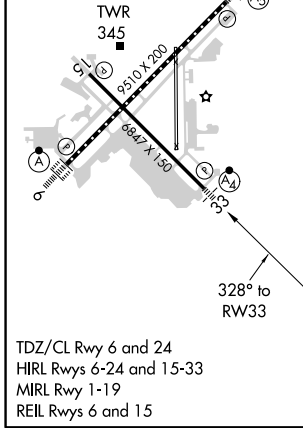
**MALSF**

**MISSED APPROACH:** Climb to 3500 direct DOCEB and hold, continue climb-in-hold to 3500.

D-ATIS <b>118.15</b>	YANKEE APP CON <b>123.95 290.55</b> <small>(061°-240°)</small> <b>125.35 281.5</b> <small>(241°-060°)</small>	BRADLEY TOWER <b>120.3 351.8</b>	GND CON <b>121.9 348.6</b>	CLNC DEL <b>121.75 322.3</b>	CPDLC
-------------------------	---	-------------------------------------	-------------------------------	---------------------------------	-------



ELEV 173	<b>D</b>	TDZE 171
----------	----------	----------



CATEGORY	A	B	C	D
LPV DA		371/40	200 (200-¾)	
LNAV/VNAV DA		463/40	292 (300-¾)	
LNAV MDA	560/40	389 (400-¾)	560/45	389 (400-7/8)
<b>C</b> CIRCLING	700-1	527 (600-1)	1120-2¾ 947 (1000-1¾)	1220-3 1047 (1100-3)

NE-1, 15 JUL 2021 to 12 AUG 2021

NE-1, 15 JUL 2021 to 12 AUG 2021