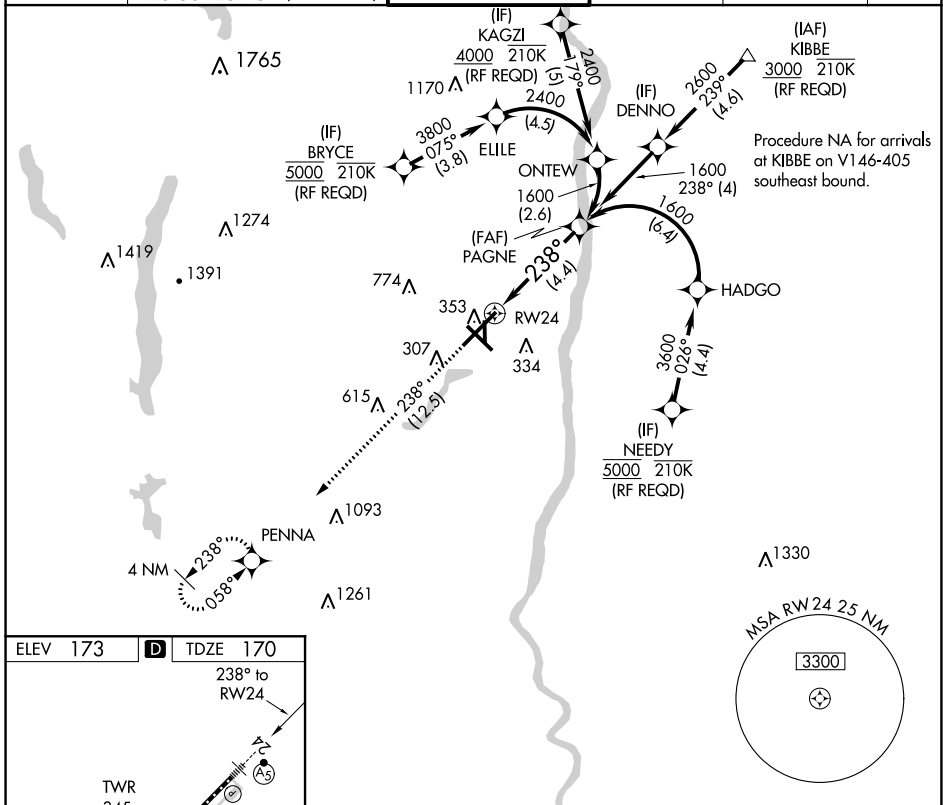


APP CRS	Rwy Idg	9509
238°	TDZE	170
	Apt Elev	173

RNAV (RNP) Z RWY 24

BRADLEY INTL (BDL)

<p>▼ For uncompensated Baro-VNAV systems, procedure NA below -18°C (0°F) or above 54°C (130°F). GPS required. For inop ALS, increase all Cats visibility to 1½ SM.</p>		<p>MALSRR</p>	<p>MISSED APPROACH: Climb to 3000 on track 238° to PENNA and hold.</p>		
D-ATIS	YANKEE APP CON	BRADLEY TOWER	GND CON	CLNC DEL	CPDLC
118.15	123.95 290.55 (061°-240°) 125.35 281.5 (241°-060°)	120.3 351.8	121.9 348.6	121.75 322.3	



NE-1, 15 JUL 2021 to 12 AUG 2021

NE-1, 15 JUL 2021 to 12 AUG 2021

ELEV 173	D	TDZE 170
----------	----------	----------

TDZ/CL Rwy 6 and 24
HIRL Rws 6-24 and 15-33
MIRL Rwy 1-19
REIL Rws 6 and 15

3000	PENNA	VGSi and RNP glidepath not coincident (VGSi Angle 3.00/TCH 71).	PAGNE
↑ tr 238°			1600
RWY 24		238°	1600
		GP 3.00°	TCH 55
See planview for multiple IF locations.			
4.4 NM			

CATEGORY	A	B	C	D
RNP 0.30 DA	622/60		452 (500-1½)	

AUTHORIZATION REQUIRED