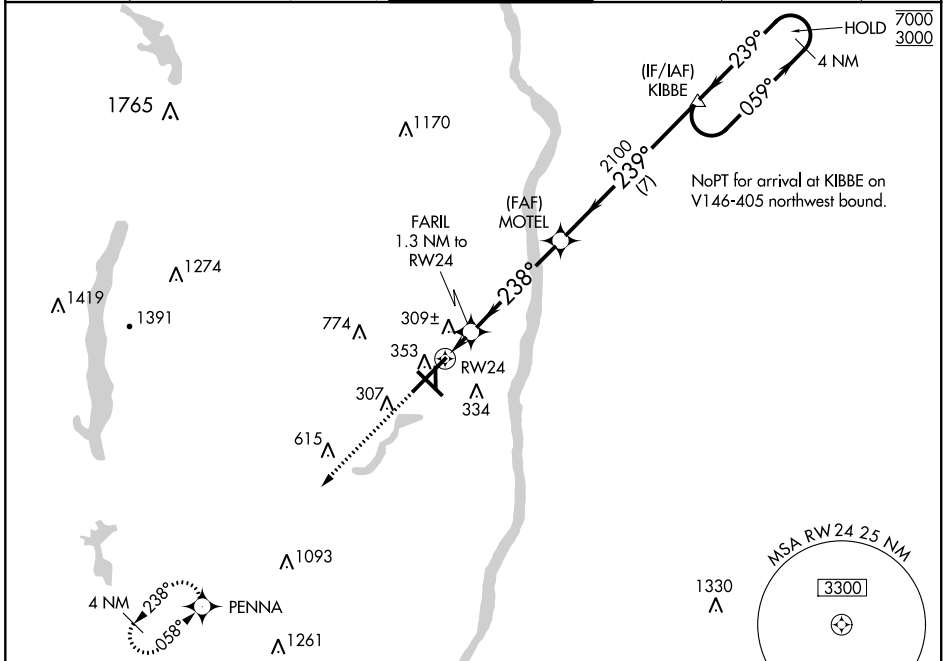


WAAS CH 97310 W24A	APP CRS 238°	Rwy Idg TDZE Apt Elev	9509 170 173
--	------------------------	-----------------------------	---

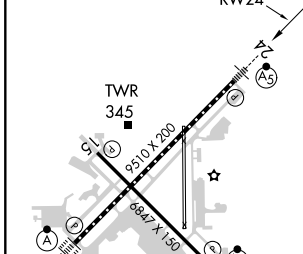
RNAV (GPS) Y RWY 24

BRADLEY INTL (BDL)

RNP APCH. Circling Rwy 19 NA at night. For uncompensated Baro-VNAV systems, LNAV/VNAV NA below -18°C or above 54°C.		MALSRR 	MISSED APPROACH: Climb to 3000 direct PENNA and hold.		
D-ATIS 118.15	YANKEE APP CON 123.95 290.55 (061°-240°) 125.35 281.5 (241°-060°)	BRADLEY TOWER 120.3 351.8	GND CON 121.9 348.6	CLNC DEL 121.75 322.3	CPDLC



ELEV 173	D	TDZE 170
----------	----------	----------



3000	PENNA	VGSI and RNAV glidepath not coincident (VGSI Angle 3.00/TCH 71).	KIBBE	4 NM Holding Pattern
*LNAV only.	FARIL 1.3 NM to RW24	MOTEL 2100	059° → 7000 ← 239° 3000	GP 3.00° TCH 55
RW24		2100		
1.3		4.6 NM	7 NM	

CATEGORY	A	B	C	D
LPV DA	370/18		200 (200-½)	
LNAV/VNAV DA	560/45		390 (400-¾)	
LNAV MDA	560/24	390 (400-½)	560/35	390 (400-¾)
C CIRCLING	700-1	527 (600-1)	1120-2¾ 947 (1000-2¾)	1220-3 1047 (1100-3)

TDZ/CL Rwy 6 and 24
HIRL Rws 6-24 and 15-33
MIRL Rwy 1-19
REIL Rws 6 and 15

NE-1, 15 JUL 2021 to 12 AUG 2021

NE-1, 15 JUL 2021 to 12 AUG 2021