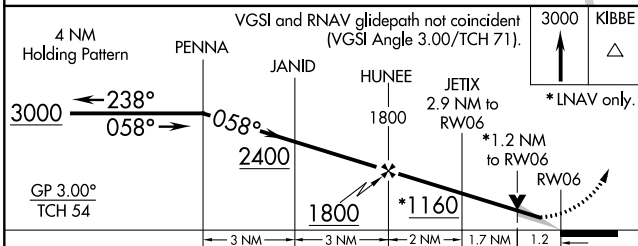
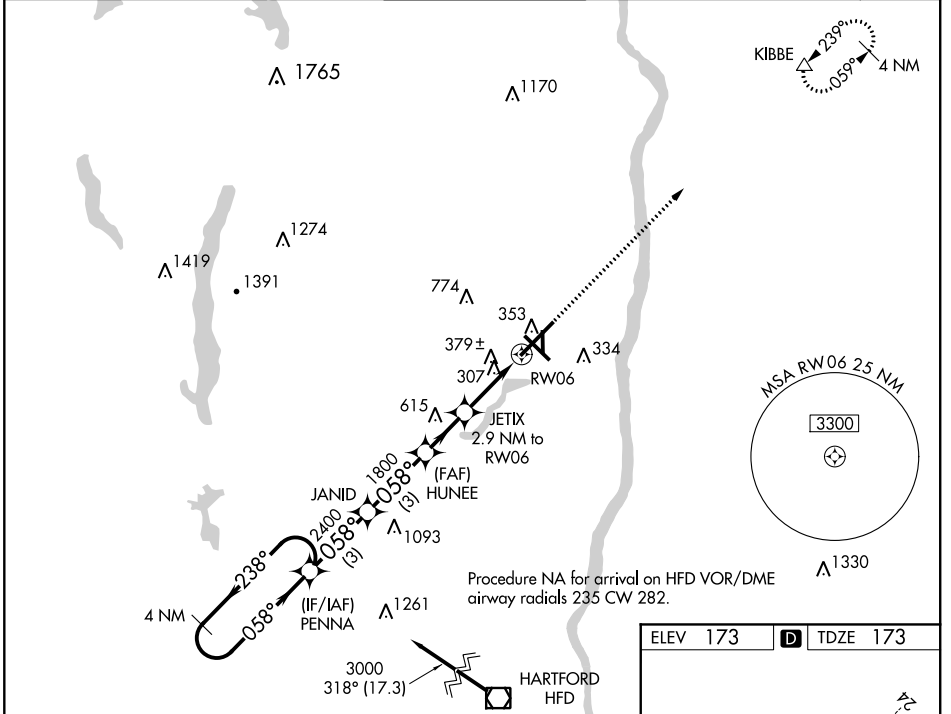


WAAS CH <b>70328</b> W06A	APP CRS <b>058°</b>	Rwy Idg TDZE Apt Elev <b>9509</b> <b>173</b> <b>173</b>
---------------------------------	------------------------	--

# RNAV (GPS) Y RWY 6

BRADLEY INTL (BDL)

For uncompensated Baro-VNAV systems, LNAV/VNAV NA below -18°C (0°F) or above 54°C (130°F). Circling Rwy 19 NA at night. DME/DME RNP-0.3 NA. For inop ALS, increase LNAV/VNAV all Cats visibility to 1½ SM and LNAV Cat C/D visibility to 1¾ SM.	ALSF-2	MISSED APPROACH: Climb to 3000 direct KIBBE and hold.			
	D-ATIS <b>118.15</b>	YANKEE APP CON <b>123.95 290.55</b> (061°-240°) <b>125.35 281.5</b> (241°-060°)	BRADLEY TOWER <b>120.3 351.8</b>	GND CON <b>121.9 348.6</b>	CLNC DEL <b>121.75 322.3</b>



ELEV 173		TDZE 173
----------	--	----------

TWR 345

9510 x 200

5847 x 130

058° to RWY 6

TDZ/CL Rwy 6 and 24  
HIRL Rwy 6-24 and 15-33  
MIRL Rwy 1-19  
REIL Rwy 6 and 15

CATEGORY	A	B	C	D
LPV DA		373/18	200 (300-½)	
LNAV/VNAV DA		640/60	467 (500-1½)	
LNAV MDA	640/24	467 (500-½)	640/50	467 (500-1)
CIRCLING	700-1	527 (600-1)	1120-2¾ 947 (1000-2¾)	1220-3 1047 (1100-3)

NE-1, 15 JUL 2021 to 12 AUG 2021

NE-1, 15 JUL 2021 to 12 AUG 2021