


LOC I-PDK 111.1	APP CRS 206°	Rwy Idg TDZE Apt Elev	4996 991 998
---------------------------	------------------------	-----------------------------	---

ILS or LOC RWY 21L

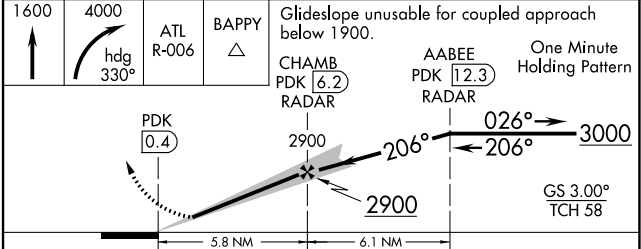
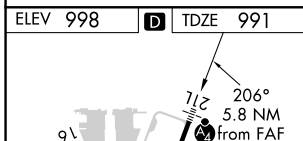
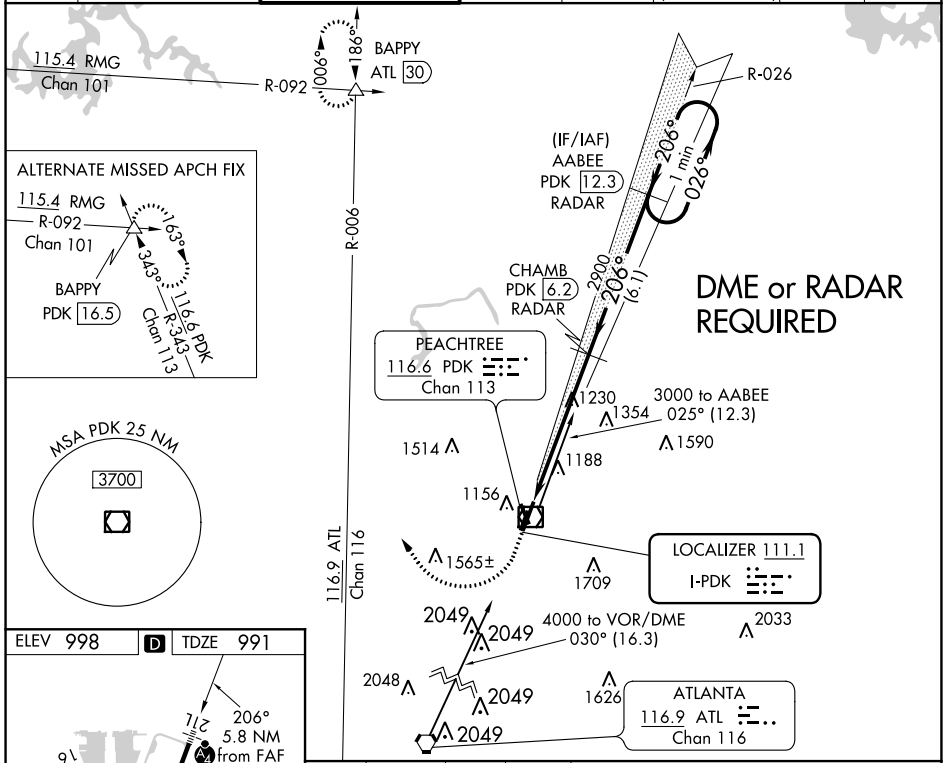
DEKALB-PEACHTREE (PDK)

⚠ Circling Rwy 16, 34 NA at night. Rwy 21L helicopter visibility reduction below ¼ SM NA. When local altimeter setting not received, use Fulton County Exec/Charlie Brown Fld altimeter setting and increase S-ILS 21L DA to 1378 and all MDA 60 feet; increase S-ILS 21L all Cats visibility ½ mile, increase S-LOC 21L Cats C/D and Circling Cat C visibility ¼ mile.

MALSF 

MISSED APPROACH: Climb to 1600 then climbing right turn to 4000 on heading 330° and ATL VORTAC R-006 to BAPPY INT/ATL 30 DME and hold.

ATIS 128.4	ATLANTA APP CON 126.975 239.275	PEACHTREE TOWER ★ 120.9 (CTAF) 281.5	GND CON 121.6	CLNC DEL 125.2	CLNC DEL 120.9 (When twr closed)	UNICOM 122.95	120.0
----------------------	---	--	-------------------------	--------------------------	---	-------------------------	--------------



CATEGORY	A	B	C	D
S-ILS 21L		1334- ⁷ / ₈	343 (400- ⁷ / ₈)	
S-LOC 21L	1480- ³ / ₄	489 (500- ³ / ₄)	1480-1 ¹ / ₈	489 (500-1 ¹ / ₈)
C CIRCLING	1580-1	582 (600-1)	1840-2 ¹ / ₂ 842 (900-2 ¹ / ₂)	2060-3 1062 (1100-3)

SE-4, 15 JUL 2021 to 12 AUG 2021

SE-4, 15 JUL 2021 to 12 AUG 2021