

APP CRS	Rwy Idg	4996
206°	TDZE	991
	Apt Elev	998

RNAV (RNP) Z RWY 21L

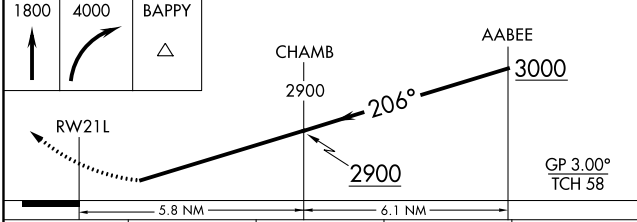
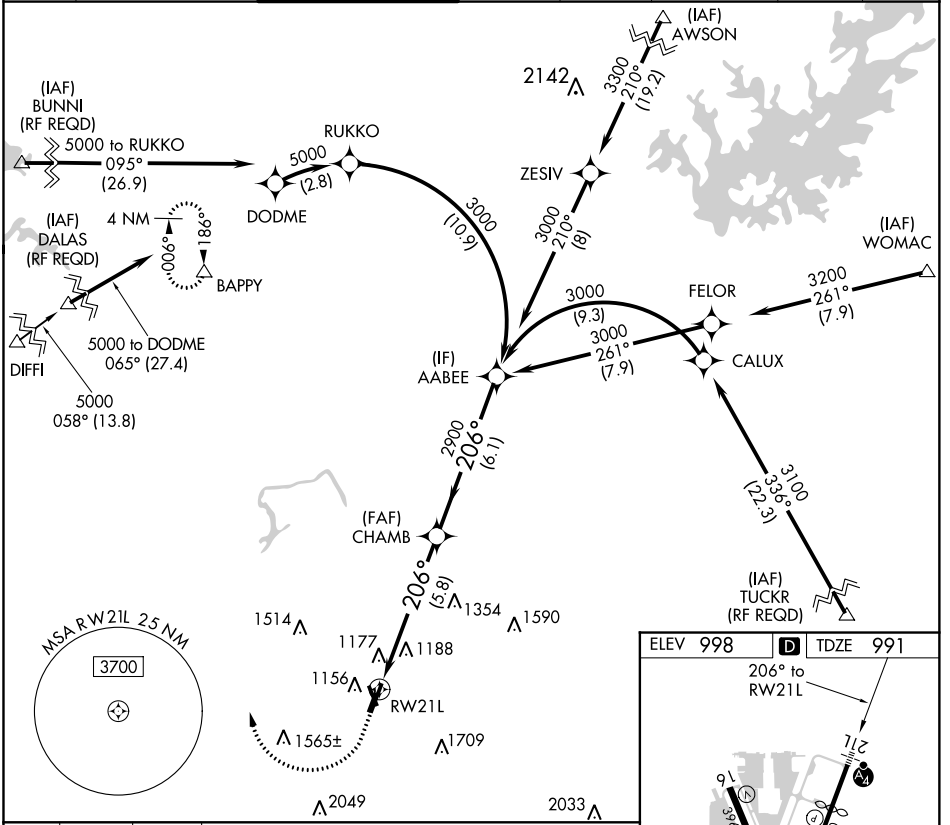
DEKALB-PEACHTREE (PDK)

▽ For uncompensated Baro-VNAV systems, procedure NA below 1°C (37°F) or above 54°C (130°F). For inop MALSF, increase RNP 0.30 all Cats visibility to 1¾. GPS required.

MALS F

MISSED APPROACH: Climb to 1800 then climbing right turn to 4000 direct BAPPY and hold.

ATIS	ATLANTA APP CON	PEACHTREE TOWER★	GND CON	CLNC DEL	CLNC DEL	UNICOM	
128.4	126,975 239,275	120.9(CTAF) 281.5	121.6	125.2	120.9 (When twr closed)	122.95	120.0



ELEV 998	D	TDZE 991
206° to RW21L		

HIRL Rwy 3R-21L

MIRL Rwy 16-34 and 3L-21R

REIL Rwy 3R and 3L

CATEGORY	A	B	C	D
RNP 0.30 DA		1502-1¾	511 (600-1¾)	

AUTHORIZATION REQUIRED

SE-4, 15 JUL 2021 to 12 AUG 2021

SE-4, 15 JUL 2021 to 12 AUG 2021