

APP CRS	Rwy Idg	<b>4996</b>
<b>221°</b>	TDZE	<b>991</b>
	Apt Elev	<b>998</b>

# RNAV (GPS) Y RWY 21L

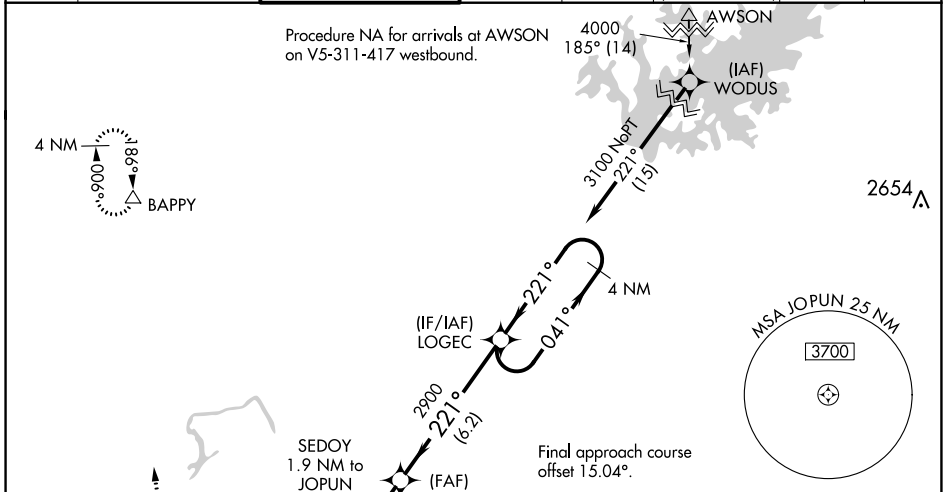
DEKALB-PEACHTREE (PDK)

RNP APCH.

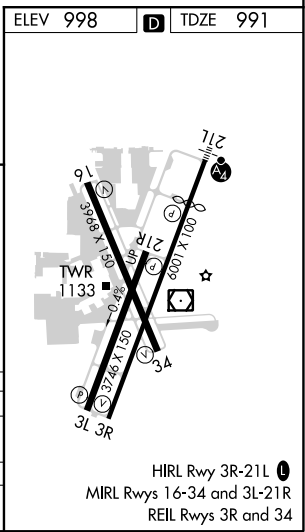
**⚠** Circling Rwy 16, 34 NA at night. Baro-VNAV NA when using Fulton County Exec/Charlie Brown Fld altimeter setting. For uncompensated Baro-VNAV systems, LNAV/VNAV NA below 1°C or above 54°C. Rwy 21 helicopter visibility reduction below 3/4 SM NA. For inop MALSF, increase LNAV/VNAV all Cats visibility to 1 1/2 mile and LNAV Cats C/D visibility to 1 3/8 mile. When local altimeter not received, use Fulton County Exec/Charlie Brown Fld altimeter setting and increase LNAV/VNAV all Cats DA to 1505 and all MDA 60 feet; increase LNAV/VNAV all Cats visibility 1/2 mile, LNAV Cats C/D visibility 1/8 mile and Circling Cat C visibility 1/4 mile. VDP NA when using Fulton County Exec/Charlie Brown Fld altimeter setting. For inop MALSF when using Fulton County Exec/Charlie Brown Fld altimeter setting, increase LNAV/VNAV Cat D visibility to 2 miles and LNAV Cat D visibility to 1 1/8 mile.

MALSF MISSED APPROACH: Climbing right turn to 4000 direct BAPPY and hold.

ATIS	ATLANTA APP CON	PEACHTREE TOWER*	GND CON	CLNC DEL	CLNC DEL	UNICOM	120.0
<b>128.4</b>	<b>126.975 239.275</b>	<b>120.9 (CTAF) 281.5</b>	<b>121.6</b>	<b>125.2</b>	<b>120.9</b> (When twr closed)	<b>122.95</b>	<b>120.0</b>



ELEV 998	TDZE 991
4000	BAPPY
*LNAV only.	*1 NM to JOPUN
JOPUN	1780*
SEDOY 1.9 NM to JOPUN	2900
KOVEY	2900
LOGEC	4 NM Holding Pattern
3100 to LOGEC 039° (12.3)	041°
GP 3.00° TCH 58	221°
0.4 1 NM 0.9 NM 3.5 NM 6.2 NM	
CATEGORY	A B C D
LNAV/VNAV DA	1461-1 1/4 470 (500-1 1/4)
LNAV MDA	1500-3/4 509 (600-3/4) 1500-1 1/4 509 (600-1 1/4)
CIRCLING	1580-1 582 (600-1) 1840-2 1/2 2060-3 842 (900-2 1/2) 1062 (1100-3)



SE-4, 15 JUL 2021 to 12 AUG 2021

SE-4, 15 JUL 2021 to 12 AUG 2021