

LOC/DME I-PSC 108.7 Chan 24	APP CRS 211°	Rwy Idg 7110 TDZE 404 Apt Elev 410
---	------------------------	---

ILS or LOC RWY 21R


TRI-CITIES (PSC)

DME required for LOC only.

▼ VDP NA when using Hermiston altimeter setting. When local altimeter setting not received, use Hermiston altimeter setting and increase all DA 95 feet and all MDA 100 feet; increase S-LOC 21R Cat C and D visibility 3/8 mile and Circling Cat C and D visibility 1/4 mile.

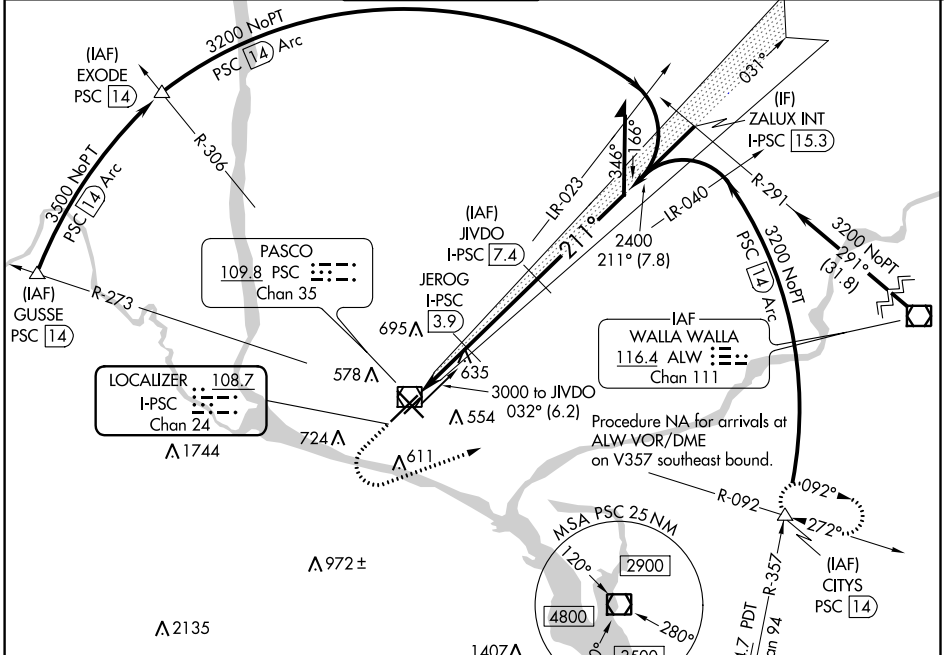
▲ For inop ALS when using Hermiston altimeter setting, increase S-ILS 21R all Cats visibility to RVR 4500, increase S-LOC 21R Cats C and D visibility to 1 3/4 SM.

#RVR 1800 authorized with use of FD or AP or HUD to DA (NA when using Hermiston altimeter setting).

MALS R


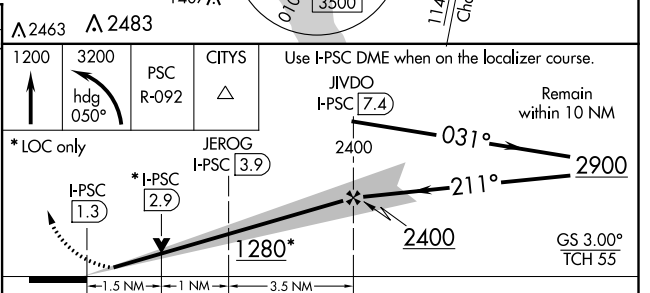
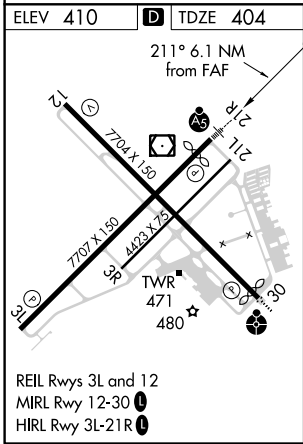
MISSED APPROACH:
 Climb to 1200 then climbing left turn to 3200 on heading 050° and PSC VOR/DME R-092 to CITYS INT/PSC VOR/DME 14 DME and hold.

ATIS 125.65	CHINOOK APP CON * 128.75 377.2	TRI-CITIES TOWER * 135.3 (CTAF) 323.3	GND CON 121.8	CLNC DEL 120.0	UNICOM 122.95
-----------------------	--	---	-------------------------	--------------------------	-------------------------



NW-1, 15 JUL 2021 to 12 AUG 2021

NW-1, 15 JUL 2021 to 12 AUG 2021



CATEGORY	A	B	C	D
S-ILS 21R	#604/24 200 (200-1/2)			
S-LOC 21R	940/24	536 (600-1/2)	940/55	536 (600-1)
CIRCLING	940-1	530 (600-1)	1040-1 3/4 630 (700-1 3/4)	1100-2 1/4 690 (700-2 1/4)