

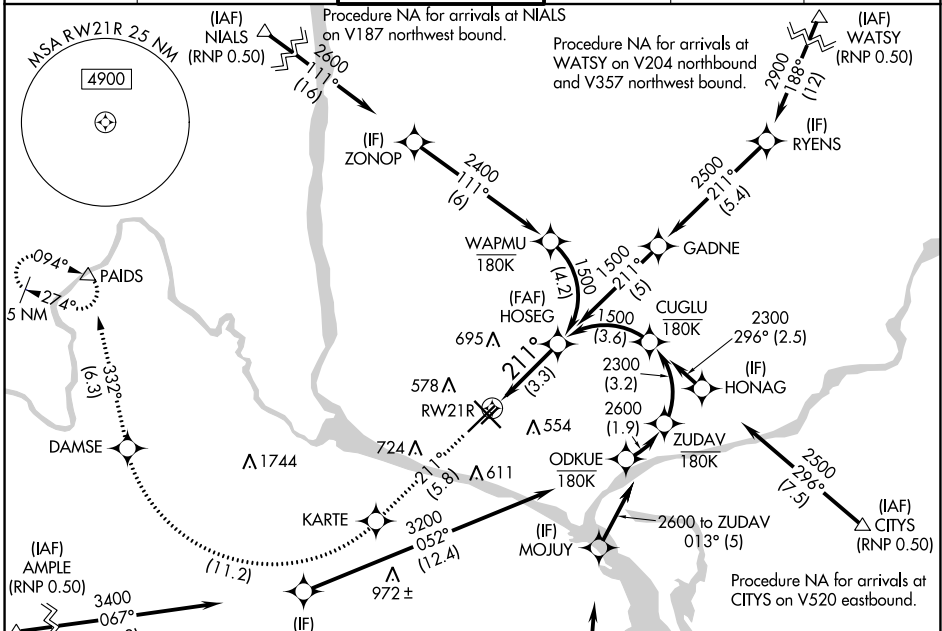
APP CRS	Rwy Idg	7110
211°	TDZE	404
	Apt Elev	410

RNAV (RNP) Z RWY 21R

TRI-CITIES (PSC)

<p>▽ For uncompensated Baro-VNAV systems, procedure NA below -14°C (7°F) or above 54°C (130°F). GPS required. RF required. For inoperative MALSR, increase RNP 0.11 all Cats visibility to RVR 5700 and RNP 0.30 all Cats visibility to 1 3/8 mile.</p>	<p>MALSR</p>	<p>MISSED APPROACH: Climb to 5200 on track 211° to KARTE, right turn to DAMSE, and on track 332° to PAIDS and hold.</p>
--	--------------	---

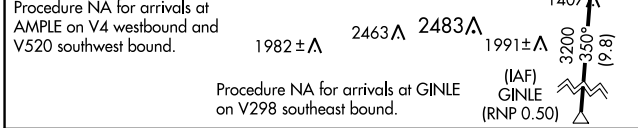
ATIS 125.65	CHINOOK APP CON* 128.75 377.2	TRI-CITIES TOWER* 135.3 (CTAF) 0 323.3	GND CON 121.8	CLNC DEL 120.0	UNICOM 122.95
-----------------------	---	--	-------------------------	--------------------------	-------------------------



NW-1, 15 JUL 2021 to 12 AUG 2021

NW-1, 15 JUL 2021 to 12 AUG 2021

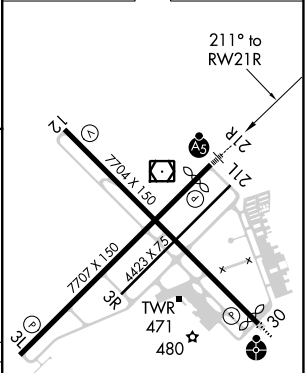
ELEV 410	D TDZE 404
----------	-------------------



5200	KARTE	DAMSE	tr 332°	PAIDS	HOSEG
tr 211°					

CATEGORY	A	B	C	D
RNP 0.11 DA		754/33	350 (400-3/4)	
RNP 0.30 DA		832/48	428 (500-1)	

AUTHORIZATION REQUIRED



REIL Rwy 3L and 12
MIRL Rwy 12-30
HIRL Rwy 3L-21R