

APP CRS <b>031°</b>	Rwy Idg TDZE Apt Elev	<b>7707</b> <b>410</b> <b>410</b>
------------------------	-----------------------------	---

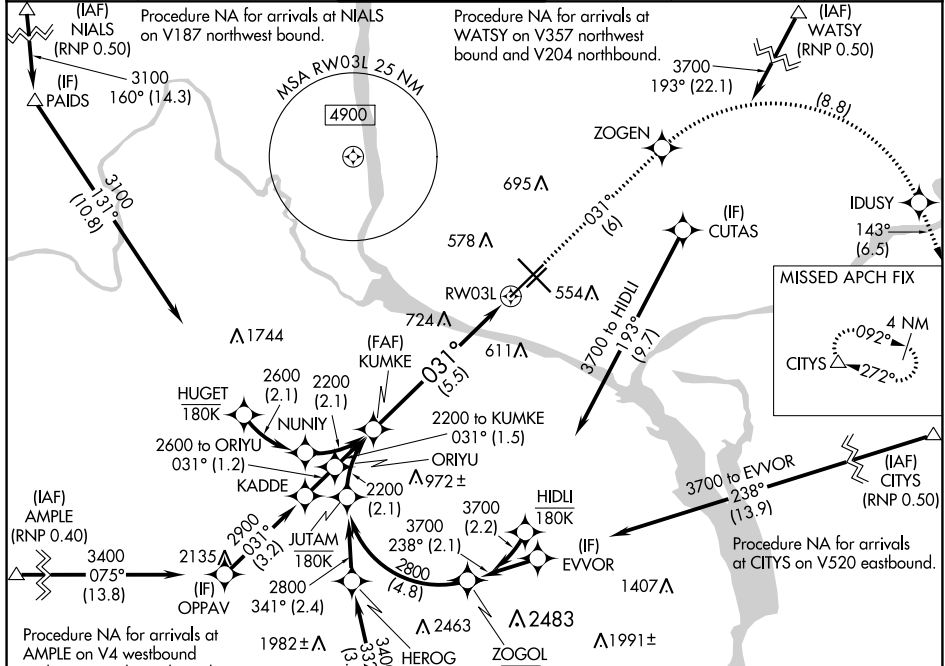
# RNAV (RNP) Z RWY 3L

TRI-CITIES (PSC)

RNP AR APCH. RF required.  
 ▽ For uncompensated Baro-VNAV systems, procedure NA below -14°C or above 54°C.

MISSED APPROACH: Climb to 3200 on track 031° to ZOGEN, right turn to IDUSY, and on track 143° to CITYS and hold.

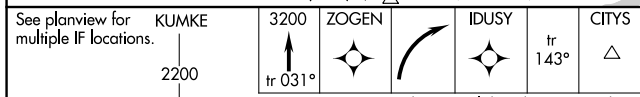
ATIS <b>125.65</b>	CHINOOK APP CON* <b>128.75 377.2</b>	TRI-CITIES TOWER* <b>135.3 (CTAF) 0 323.3</b>	GND CON <b>121.8</b>	CLNC DEL <b>120.0</b>	UNICOM <b>122.95</b>
-----------------------	---	--	-------------------------	--------------------------	-------------------------



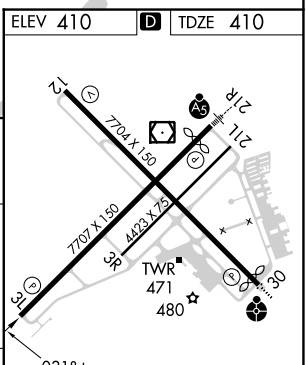
NW-1, 15 JUL 2021 to 12 AUG 2021

NW-1, 15 JUL 2021 to 12 AUG 2021

ELEV 410	TDZE 410
----------	----------



VGSI and RNAV glidepath not coincident. (VGSI Angle 3.00/TCH 49).



CATEGORY	A	B	C	D
RNP 0.11 DA		729-1	319 (400-1)	
RNP 0.30 DA		849-1½	439 (500-1½)	

**AUTHORIZATION REQUIRED**

REIL Rwy 3L and 12  
 MIRL Rwy 12-30  
 HIRL Rwy 3L-21R