

WAAS CH <b>58006</b> <b>W12A</b>	APP CRS <b>121°</b>	Rwy Idg <b>7504</b> TDZE <b>402</b> Apt Elev <b>410</b>
--	------------------------	---

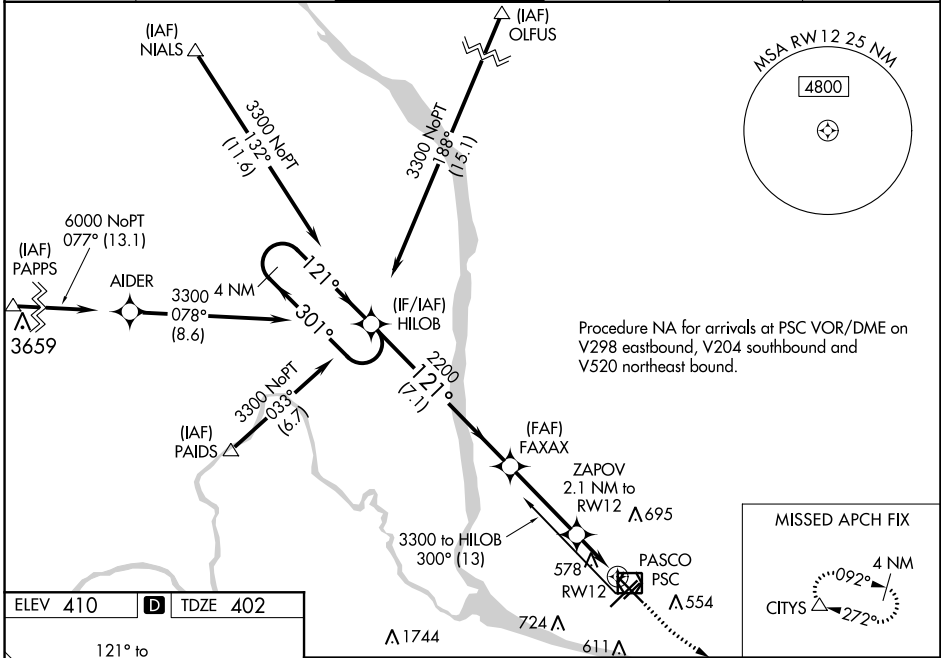
# RNAV (GPS) Y RWY 12

TRI-CITIES (PSC)

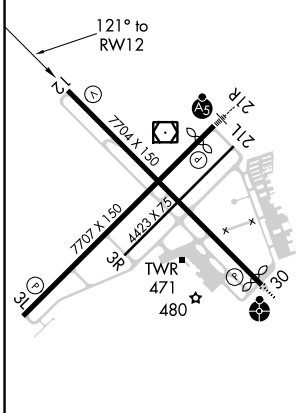
**⚠** Baro-VNAV NA when using Hermiston altimeter setting. For uncompensated Baro-VNAV systems, LNAV/VNAV NA below -14°C (7°F) or above 54°C (130°F). DME/DME RNP-0.3 NA. VDP NA with Hermiston altimeter setting. When local altimeter setting not received, use Hermiston altimeter setting; increase all DA 95 feet and all MDA 100 feet. Increase LPV all Cats visibilities 1/8 mile; LNAV/VNAV all Cats visibilities 3/8 mile; increase LNAV and Circling Cats C and D visibility 1/4 mile.

**MISSED APPROACH:**  
Climb to 900 then climbing left turn to 3200 direct CITYS and hold.

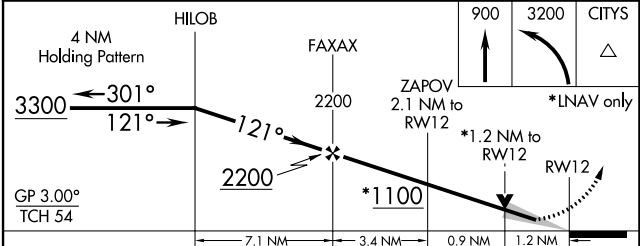
ATIS <b>125.65</b>	CHINOOK APP CON* <b>128.75 377.2</b>	TRI-CITIES TOWER* <b>135.3 (CTAF) 0 323.3</b>	GND CON <b>121.8</b>	CLNC DEL <b>120.0</b>	UNICOM <b>122.95</b>
-----------------------	---	--	-------------------------	--------------------------	-------------------------



ELEV 410	<b>D</b>	TDZE 402
----------	----------	----------



REIL Rwy 3L and 12  
MIRL Rwy 12-30 **0**  
HIRL Rwy 3L-21R **0**



CATEGORY	A	B	C	D
LPV DA		602-3/4	200 (200-3/4)	
LNAV/VNAV DA		755-1 1/8	353 (400-1 1/8)	
LNAV MDA	840-1	438 (500-1)	840-1 3/8	438 (500-1 3/8)
<b>C</b> CIRCLING	880-1 470 (500-1)	940-1 530 (600-1)	1040-1 3/4 630 (700-1 3/4)	1100-2 1/4 690 (700-2 1/4)

NW-1, 15 JUL 2021 to 12 AUG 2021

NW-1, 15 JUL 2021 to 12 AUG 2021