

WAAS CH 40206 W03A	APP CRS 031°	Rwy Idg TDZE Apt Elev	7707 410 410
--	------------------------	-----------------------------	---

RNAV (GPS) Y RWY 3L

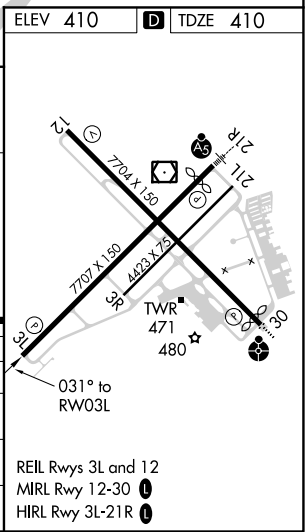
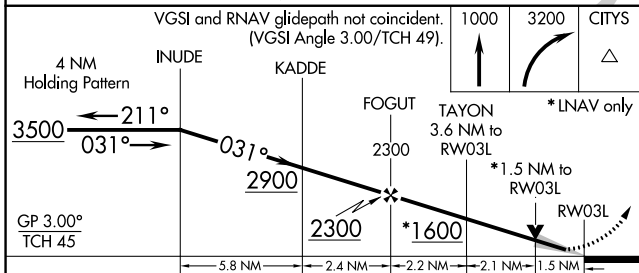
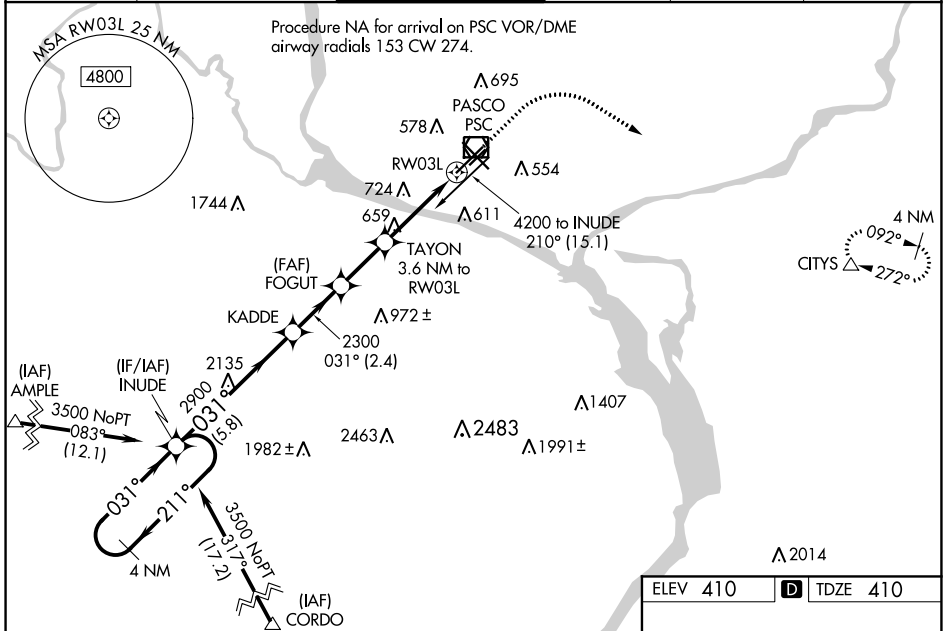
TRI-CITIES (PSC)

RNP APCH.

⚠ Baro-VNAV NA when using Hermiston altimeter setting. For uncompensated Baro-VNAV systems, LNAV/VNAV NA below -14°C or above 54°C. VDP NA with Hermiston altimeter setting. When local altimeter setting not received, use Hermiston altimeter setting: increase all DA 95 feet and all MDA 100 feet. Increase LPV all Cats visibility ¼ mile, LNAV/VNAV all Cats visibilities ⅓ mile: increase LNAV Cats C and D visibility ⅓ mile. Circling Cat C and D visibility ¼ mile.

MISSED APPROACH:
Climb to 1000 then climbing right turn to 3200 direct CITYS and hold.

ATIS 125.65	CHINOOK APP CON* 128.75 377.2	TRI-CITIES TOWER* 135.3 (CTAF) 0 323.3	GND CON 121.8	CLNC DEL 120.0	UNICOM 122.95
-----------------------	---	--	-------------------------	--------------------------	-------------------------



CATEGORY	A	B	C	D
LPV DA	610-¾ 200 (200-¾)			
LNAV/VNAV DA	708-1 298 (300-1)			
LNAV MDA	920-1 510 (600-1)	920-1¾ 510 (600-1¾)		
CIRCLING	920-1 510 (600-1)	940-1 530 (600-1)	1040-1¾ 630 (700-1¾)	1100-2¼ 690 (700-2¼)

NW-1, 15 JUL 2021 to 12 AUG 2021

NW-1, 15 JUL 2021 to 12 AUG 2021